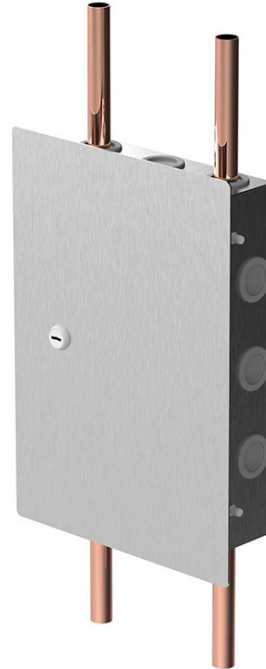


# Hot Water and Cold Water Isolation Valves 20mm in Stainless Steel Cabinet with Recessed Lid

## ATMS202VC-RL

### KEY FEATURES

- Provides access to isolation valves in wall
- 304 grade stainless steel cabinet
- Recess lid with lock and key
- Can be mounted vertically or horizontally
- Valves and pipes can be repositioned to suit different mounting as required
- Cabinet lid - No.4 brushed finish stainless steel
- DN20 copper tails



### PRODUCT CODES

ATMS202VC-RL

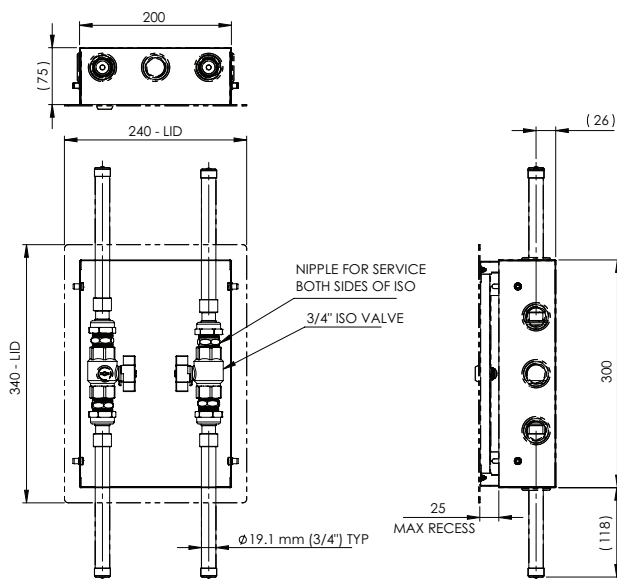
Hot Water and Cold Water Isolation Valves 20mm in Stainless Steel Cabinet with Recessed Lid

Version 1.0\_\_17Nov22

# Hot Water and Cold Water Isolation Valves 20mm in Stainless Steel Cabinet with Recessed Lid

## TECHNICAL INFORMATION

Inlet / Outlet Tube Size	DN20 copper tube
Maximum Operating Pressure	2500 kPa (water)
Maximum Operating Temperature	99°C



Enware products are to be installed in accordance with the Plumbing Code of Australia and AS/NZS3500. Reference should also be made to the Australasian Health facility Guidelines (AHFG), ABCB and Local Government regulations when considering the choice of, and the installation of these products.

Enware Australia advises:

1. Due to ongoing Research and Development, specifications may change without notice. 2. Component specifications may change on some export models. 3. Refer to warranty statement for warranty details - [www.enware.com.au/warranty](http://www.enware.com.au/warranty)

Version 1.0\_\_17Nov22