

Aquablend eSQX Touch-Free Auto Sense Point-of-Use Thermostatic Wall Mixer - Front of Wall Component – 230mm Spout

Aquablend eSQX is Australia's first and most technically advanced touch-free thermostatic mixer solution. Designed to deliver touch-free pre-mixed warm water for enhanced infection control and cross-contamination prevention. The solution includes an infra-red sensor located beneath the outlet, designed for general hand hygiene within healthcare and food preparation facilities.

KEY FEATURES

- Auto Sense function - place hand under spout to turn on, move hand away to turn off
- Low voltage 12V mains power or 6V battery operated
- 230mm spout
- Flush cycle stagnation management to reduce risk of bacterial growth, usage monitoring and other function settings are adjustable via Oras App and Bluetooth connectivity
- Effective reduction of Legionella risk
- AHFG Type A and B healthcare basin compatibility
- Compatible with Smartflow Monitoring System for TMV monitoring and reporting
- Smart, durable easy-clean chrome surfaces
- Smooth bore tubular spout designed to minimise bacteria growth
- IP67 rated connections
- Faceplate can be removed to access integral isolation/check valves, strainers and inspection ports
- Requires In-Wall Component ATM621 or ATM620



PRODUCT CODES

ATAMC2L5	6Lpm
ATAMC2L6	4Lpm



Products are to be installed in accordance with the Plumbing Code of Australia and AS/NZS3500. Reference should also be made to the Australasian Health Facility Guidelines (AHFG), ABCB and Local Government regulations when considering the choice of, and the installation of these products.

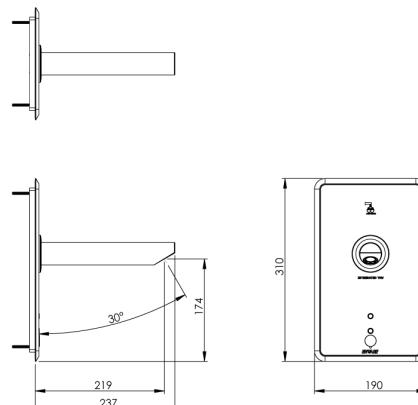
Due to ongoing Research and Development, specifications may change without notice. Component specifications may change on some export models.

Refer to warranty statement for warranty details - www.enware.com.au/warranty.

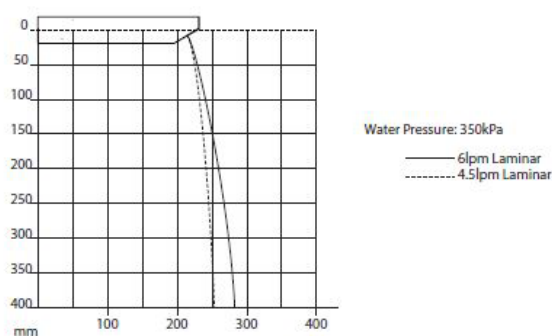
Aquablend eSQX Touch-Free Auto Sense Point-of-Use Thermostatic Wall Mixer - Front of Wall Component – 230mm Spout

TECHNICAL DATA

Sensor Range	250mm (Factory default setting -adjustable)
Maximum Flow Time	2 minutes (Factory default setting -adjustable)
Minimum Water Run Time	2 secs (+/-1) after hands removed from sensor range (Factory default setting - adjustable)
Sensor Power Supply	12 VDC or 6V Battery



Water Flow Projection



REQUIRED OPTIONS

ATM621	Aquablend eSQX - Touch-Free Point-of-Use Thermostatic Wall Mixer In-Wall Component - Mains
ATM620	Aquablend eSQX - Touch-Free Point-of-Use Thermostatic Wall Mixer In-Wall Component - Battery