

Aquablend SQX Lead Free Thermostatic Basin Mixer

Installation and Maintenance Instructions

ATM606L-100

ATM606L-100MB



ATM606L-200

ATM606L-200MB



contents

PRODUCT DESCRIPTION -----	PAGE 3
DIMENSIONS -----	PAGE 4
COMPONENTS -----	PAGE 5
INSTALLATION CONDITIONS -----	PAGE 6
BEFORE INSTALLATION-----	PAGE 7
INSTALLATION -----	PAGE 8
OPERATION -----	PAGE 12
TEMPERATURE ADJUSTMENT -----	PAGE 13
COMMISSIONING & IN-SERVICE TESTS -----	PAGE 14
THERMAL DISINFECTION PROCEDURE -----	PAGE 16
MAINTENANCE -----	PAGE 17
SERVICING THE MIXER -----	PAGE 18
CLEANING -----	PAGE 19
SPARE PARTS -----	PAGE 20
TROUBLESHOOTING -----	PAGE 21
COMMISSIONING / MAINTENANCE REPORT -----	PAGE 22
PRODUCT WARRANTY -----	PAGE 24

product description

The new Lead Free Aquablend SQX is a Point-of-use Thermostatic Basin Mixer with sequential operation. Certified to AS 4032.4, thermostatic mixing at the point of use can provide reduced risk of legionella and other water-borne bacteria, improving water system health.

Designed for easy installation and efficient maintenance, lowering whole-of-life cost.

The SQX range also has outstanding user benefits, providing ergonomic comfort and control, scald protection and both water and energy efficiencies beyond those of traditional tapware.

The spout has unique self-draining function and reduced internal surface area to mitigate legionella growth, and can be removed for disinfection if required.

Pressure compensating 6lpm or 4lpm flow controls and a flow straightener device reduces splashing and airborne water droplets that may carry bacteria.

User friendly, ergonomically designed 100mm or 200mm lever handle is suitable for wrist and elbow activation or AS1428 applications.

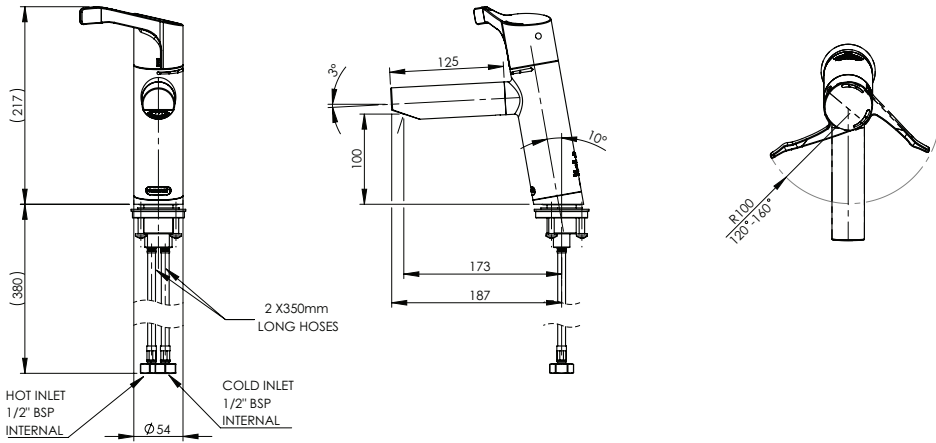
Smooth body and handle design aids cleaning and disinfection for clinical areas.

New "Bayonet" quick connection system allows removal of the tap assembly above the basin. With access to all serviceable parts in-situ including isolation valves – servicing, installation and commissioning time is greatly reduced and simplified.

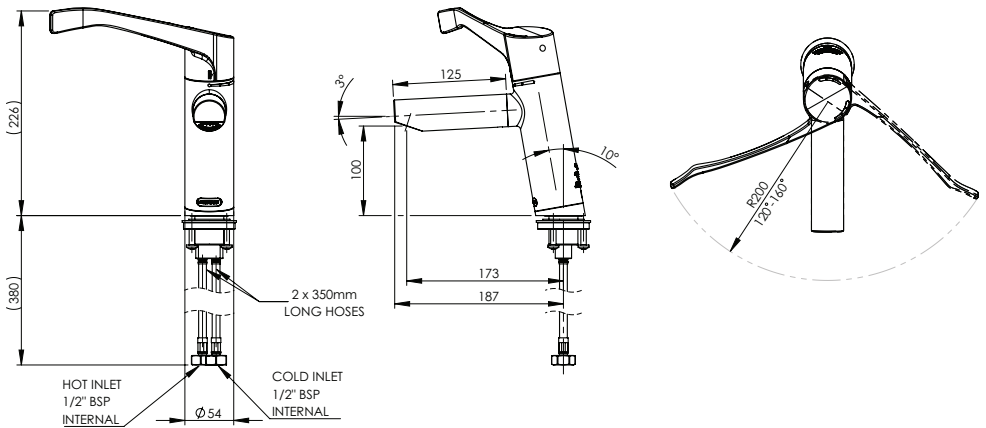
Integral isolating ball valves allow for pre- fitting and flushing prior to final fit off.

dimensions

ATM606L-100

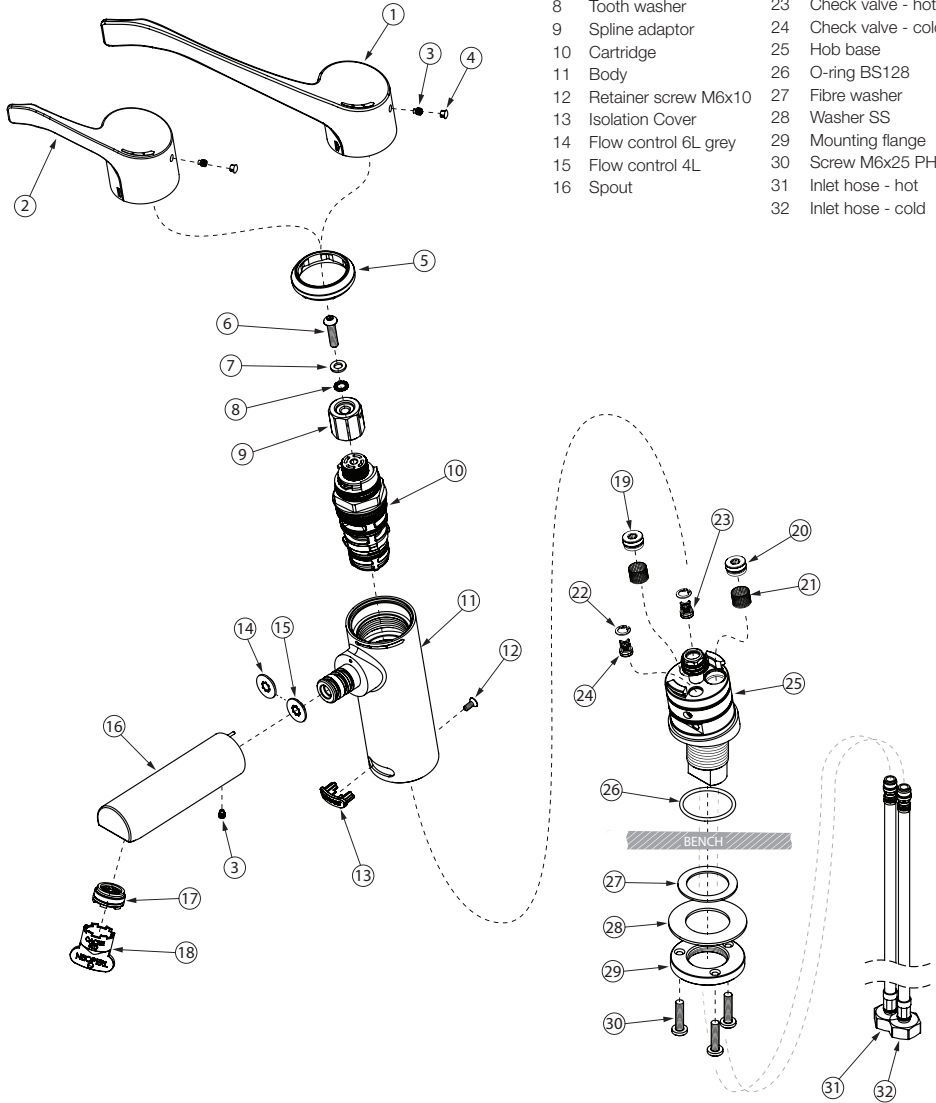


ATM606L-200



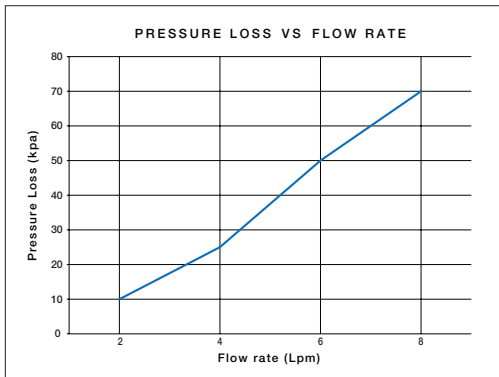
components

- | | | | |
|----|----------------------|----|--|
| 1 | Lever handle 200mm | 17 | Aerator cache laminar flow straightener 24x1 |
| 2 | Lever handle 100mm | 18 | Aerator key |
| 3 | Grub screw M5 | 19 | Strainer plug - hot |
| 4 | Handle plug | 20 | Strainer plug - cold |
| 5 | Dress ring | 21 | Strainer |
| 6 | Screw M6x25 BTN | 22 | Circlip |
| 7 | Washer | 23 | Check valve - hot |
| 8 | Tooth washer | 24 | Check valve - cold |
| 9 | Spline adaptor | 25 | Hob base |
| 10 | Cartridge | 26 | O-ring BS128 |
| 11 | Body | 27 | Fibre washer |
| 12 | Retainer screw M6x10 | 28 | Washer SS |
| 13 | Isolation Cover | 29 | Mounting flange |
| 14 | Flow control 6L grey | 30 | Screw M6x25 PH |
| 15 | Flow control 4L | 31 | Inlet hose - hot |
| 16 | Spout | 32 | Inlet hose - cold |



installation conditions

Hot Temperature Supply Range	Min 55°C Max 85°C
Cold Temperature Supply Range*	Min 5°C Max 25°C
Thermostatic Temperature Range	Cold to 46°C
Minimum Temperature Differential (between hot supply and the outlet temperature)	10°C
Dynamic Inlet Pressures	Min 20 kPa Max 500 kPa
Permitted Supply Pressure Variation (maximum dynamic pressure differential between hot and cold supplies)	10%
Static Inlet Pressures	1000 kpa (for testing purposes/ system commissioning)
Flow Rate	4 Lpm / 6 Lpm Laminar Flow
Inlet Connection	1/2" BSP flexi connector



* Where cold inlet temperature may exceed recommended range due to seasonal variation, a 5°C temperature differential between the inlet cold supply and outlet mixed temperature setting must be maintained.



compliance

Enware products are to be installed in accordance with the Plumbing Code of Australia (PCA) and AS/NZS3500. Installations not complying with PCA and AS/NZS 3500 may void the product and performance warranty provisions.

Reference should also be made to the Australasian Health Facility Guidelines (AHFG), ABCB and Local Government regulations when considering the choice of, and the installation of these products.

This product is compliant with the Lead Free requirements of NCC Volume Three.

For use with potable water only.

NOTE: Enware Australia advises:

1. Due to ongoing Research and Development, specifications may change without notice.
2. Component specifications may change on some export models.

before installation

Aquablend SQX Thermostatic Mixers are WaterMark approved to AS4032.4 and should be installed using the appropriate Standard, Code of Practice and legislation applicable to each state and following the details outlined in this section.

Thermostatic mixing valves must be installed by a qualified plumber.

NOTE: To effectively control microbial hazards during system design, installation, commissioning and maintenance, the requirements outlined in AS/NZS3666 and local legislation shall be adhered to.

Prior to the installation of the valve, the system must be checked to ensure that the system operating conditions fall within the recommended operating range specified in "Installation Conditions" on previous page. Incorrect installation may cause the valve to operate outside specified performance values and may also void warranty. Pressure reduction valves may be required to comply with the recommended maximum supply pressure or balanced pressure requirements.

Ensure all supply lines are flushed thoroughly with clean water to remove debris prior to the installation of this product, as per AS/NZS3500.1. This will remove any physical contaminants from the pipework, ensuring trouble-free operation. During the flushing procedure care should be taken to prevent water damage occurring to the surrounding area.

installation

1. Prepare a tap hole on bench.
Tap hole can be between 33-35mm in diameter.
Maximum bench thickness is 20mm. **SEE IMAGE 01**

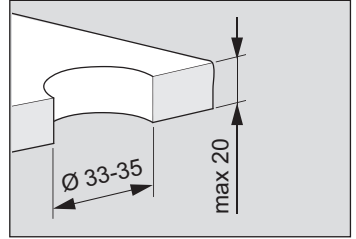


IMAGE 01

2. Ensure the O-ring is fitted to the bottom of hob base.
Fit the hob base through the tap hole, and from the underside of the basin/sink, fit fibre washer, metal washer, then brass locking nut. Hand tighten the brass locking nut. **SEE IMAGE 02**

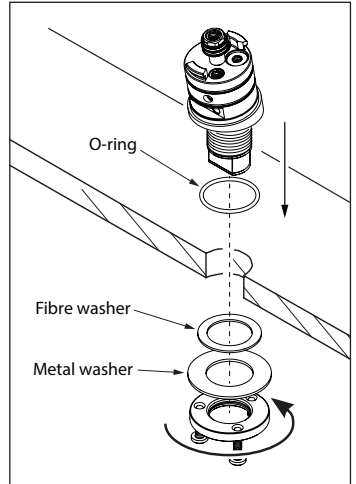


IMAGE 02

3. Check that the hob base is facing straight forward, then use a Phillips-head screw driver to tighten 3 screws evenly on the brass nut. Do not overtighten. **SEE IMAGE 03**
Note: Over-tightening the brass locking nut may cause ceramic basins to crack.

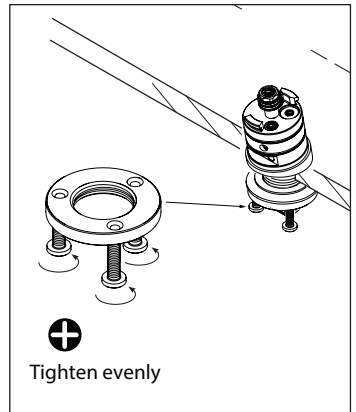


IMAGE 03

4. To fit tap body onto hob base, first hold the tap body at right angle so that the spout faces the side. Fit the tap body onto hob base slowly but firmly until the tap body meets the chrome step on the hob base, then twist the tap body 90° in a twist-lock motion. **SEE IMAGE 04** Fit retaining screw through the back of tap body to lock the body in position.

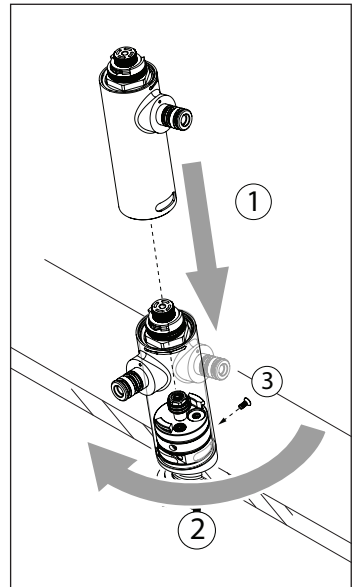


IMAGE 04

5. Take grub screw out of spout. Check that the flow control is fitted in the correct orientation. (4 Lpm flow control fitted standard, 6 Lpm option supplied in carton). Fit the spout onto tap body, then secure the spout in place with grub screw. **SEE IMAGE 05**

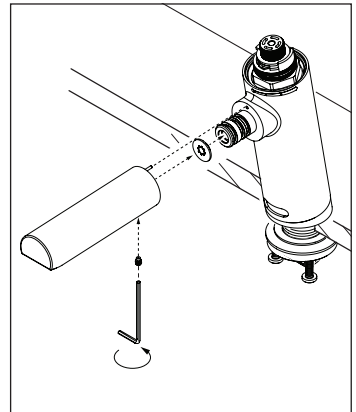


IMAGE 05

- Fit flexi-hoses onto the hot and cold inlets located on the bottom of hob base. Ensure the COLD (Blue) hose is connected to the side marked 'C' and the HOT (Red) hose into the side marked 'H'. Hand tighten the flexi-hose until it comes to a firm stop. Do not over-tighten. Ensure the hose is not kinked, bent, twisted, or stretched. (Minimum bend radius 40mm). **SEE IMAGE 06 & 07**

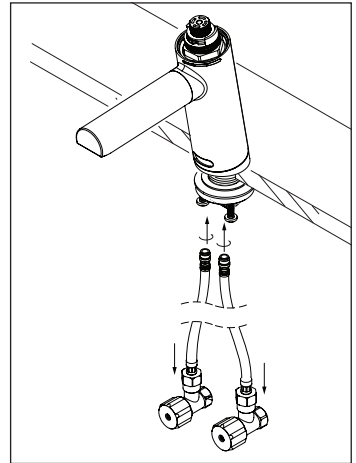


IMAGE 06

- Ensure supply lines are flushed thoroughly with clean water before proceeding. Connect the flexi-hoses to water supply, making sure the hot water supply is connected to the hot inlet hose. **NOTE: It is a requirement of AS/NZS 3500 that the flexi-hoses are connected directly to isolation valves/ stop taps installed at this position.**

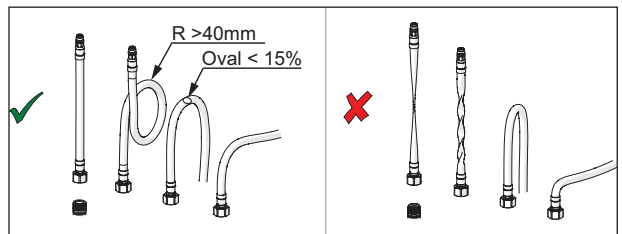


IMAGE 07

- Using a 3mm Allen key or a small flat head screw driver, ensure both isolation valves within the SQX mixer are turned off, with their slot in the horizontal position. **SEE IMAGE 08**
- Turn on the hot and cold water supplies, and check for leaks.

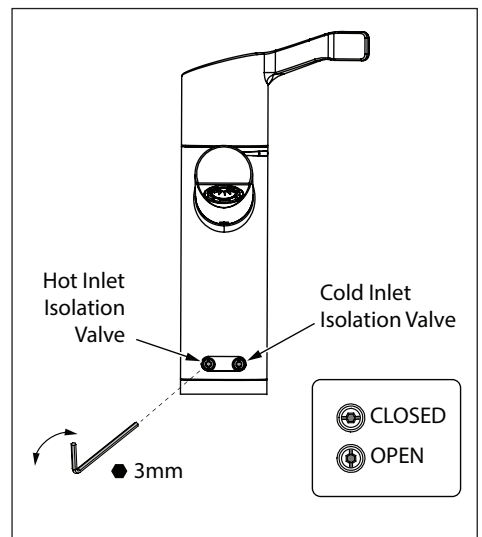


IMAGE 08

10. Fit spline adaptor [9] onto the SQX cartridge spindle [10], then loosely fit handle [2] over the spline adaptor. Rotate the handle anti-clockwise to the full 'OPEN' position.

SEE IMAGE 09 & 10

11. Open both hot and cold isolation valves by rotating 90°.

SEE IMAGE 08

12. While the mixer is running, rotate lever handle in a clockwise motion and test water temperature from the outlet to ensure the water temperature changes with the motion of the handle.

13. Continue to turn handle in clockwise motion to the full CLOSED position and test for leaks while the mixer is closed and pressurised.

14. The SQX Thermostatic mixer is now ready for commissioning. Follow the commissioning procedure on page 14.

SEE PAGE 14 - COMMISSIONING

15. Fit isolation cover [13] on the tap body, to protect the isolation valves from tampering.

16. Fit dress ring [5] on the tap body.

HANDLE ASSEMBLY & POSITIONING

17. With the spline adaptor fitted onto the cartridge spindle, loosely place lever handle onto spline adaptor. Check that the valve is in the "OFF" position, where the water flow is turned off and the lever handle comes to a stop when it is rotated clockwise.

18. If the arrow marking on handle does not line up with the marking on tap body, remove the handle and spline adaptor, and re-fit the spline adaptor and handle in the correct position. **SEE IMAGE 11**

19. With the lever handle in correct position, take the lever handle off the spline adaptor. Fit tooth washer [8] and washer [7], and fix the spline adaptor in place using screw [6].

20. Fit lever handle on and secure in place with grub screw [3], then fit handle plug [4].

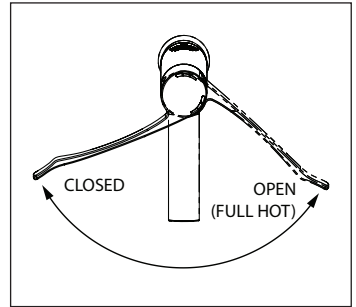


IMAGE 09

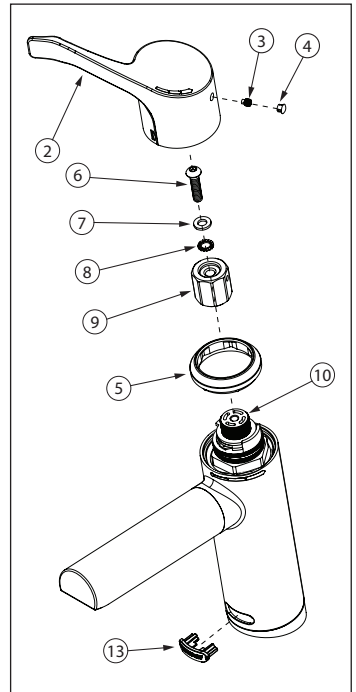


IMAGE 10

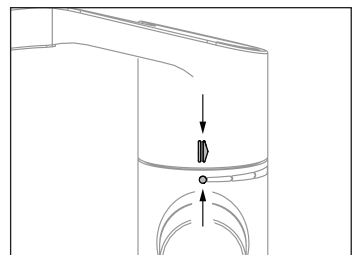


IMAGE 11

operation

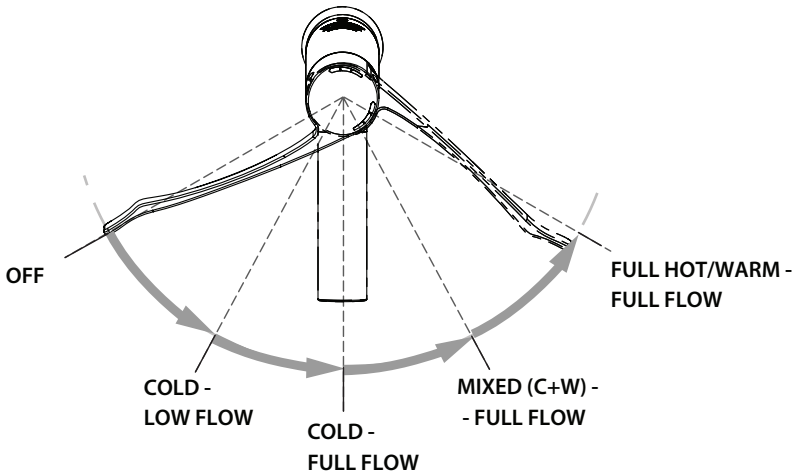
The sequential lever turns progressively from “OFF” to “COLD” to “WARM” / “HOT”.

Starting from OFF position (lever handle to the left),

To operate the tap, turn the lever to the right. The flow volume gradually increases. At the centre position, cold water is at its full flow.

Turning the lever further past COLD, the flow rate stays at maximum but now the water is mixed with more hot / warm water.

At “HOT” position (lever handle to the right), it is at full temperature and flow supplied to the hot inlet of the mixer, and is no longer mixed with cold water.



HANDLE POSITIONS

temperature adjustment

The ENWARE AQUABLEND SQX Thermostatic Mixers are supplied factory set at a maximum of 41°C +/- 2°C. To alter this temperature, adopt the following procedure:

Note: Changing the maximum set temperature will change the amount of rotation of the handle. Increasing the temperature will mean extra rotation, while decreasing the temperature will result in less rotation.

1. Ensure the mixer is in the 'OFF' position. Remove the screw cap [4] and grub screw [3], then remove handle [2], screw [6,7,8] and spline adaptor [9]. Remove isolation cover [13].
2. With the top of the mixer and cartridge now exposed, remove the upper temperature ring away from the cartridge spline - take care not to remove the lower temperature spline. **SEE IMAGE 13** Loosely re-fit the spline adaptor and handle in this 'OFF' position.
3. Turn the tap on and check the temperature of the water with a hand held digital thermometer. With the thermometer gauge held within the flow stream, continue to move the handle until the desired (Maximum) hot/warm temperature is achieved. **SEE IMAGE 14**
4. Once desired temperature is achieved, remove handle without changing spindle position. Re-fit the upper temperature ring so the lug can form a stop against the brass shoulder on the cartridge. **SEE IMAGE 15 & 16**
5. Loosely re-fit spline adaptor and handle and turn to 'OFF' position. Re-fit handle in its correct "off" position orientation and secure the handle.

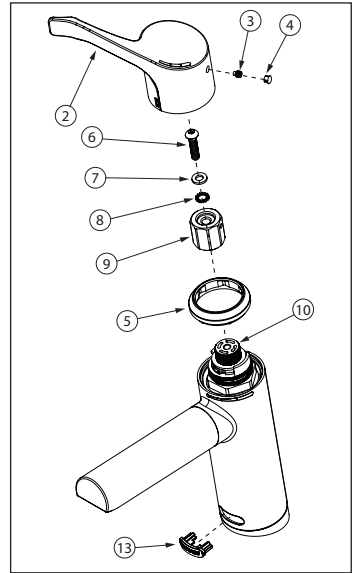


IMAGE 12

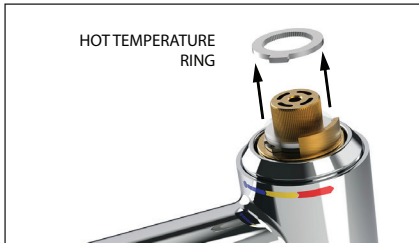


IMAGE 13

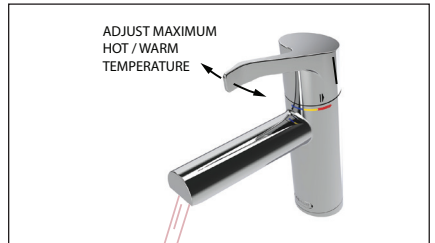


IMAGE 14

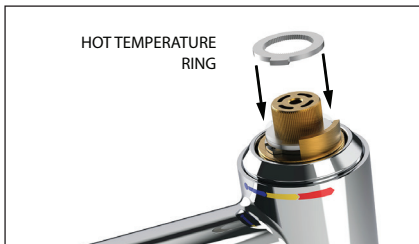


IMAGE 15



IMAGE 16

commissioning & in-service tests

Since the installed supply conditions are likely to be different from those applied in the laboratory tests, a simple test should be carried out on each mixer at commissioning to provide a performance reference point for future in-service tests. Check the following in all cases to ensure the correct performance of the thermostatic mixer:

- the designation of the thermostatic tap matches the intended application.
- the supply pressures and temperatures are within the range of operating pressures and temperatures for the designation of the valve.
- the supply temperatures are within the range permitted for the tap and by guidance information on the prevention of Legionella etc.

It is important to record the testing done during the commissioning and also to record the temperature of the hot and cold water supplies and the temperature of the mixed water at the maximum setting.

Upon completion of the installation, the valve should be tested and commissioned as per the procedure outlined below or as specified by the local authority. The entire procedure should be read through thoroughly prior to the commissioning of the valve. A calibrated digital thermometer having rapid response time with maximum temperature hold will be required to check and set the outlet mixed temperature of the valve. [ATMS1200 - Aquablend Test Kit]

COMMISSIONING PROCEDURE

TEST & ADJUST MAXIMUM TEMPERATURE

To test the temperature, open the mixer by turning the lever handle to the full "hot" position, and allow mixed heated water to flow for at least 60 seconds to stabilise the temperature before taking a reading at outlet with a digital thermometer. **SEE IMAGE 17**

The temperature should be taken close to the outlet. If the maximum hot or warm outlet temperature setting requires adjustment, follow the Temperature Adjustment instructions on page 13.

SHUT DOWN TEST

Once the correct maximum outlet temperature setting has been achieved, the valve's internal mechanism should be exercised at least 3 times by alternately shutting off the hot and cold supplies while the mixer is set in the full warm position. Do this at the outlet using the mixer's separate Hot and Cold isolation Valves. **SEE IMAGE 18** This will cause the piston inside the cartridge to travel to its full stroke and ensure that it is moving freely so the valve can operate correctly.

TEST 1

Open mixer to the full hot/ warm position and with both supplies turned fully on at the system's temperatures, allow the mixed water temperature to stabilise and note the outlet temperature.

While holding a digital thermometer in the outlet water flow, quickly isolate the cold water supply to the valve. The outlet flow should quickly cease flowing. The flow should be less than 0.1L/min following the isolation.

Monitor the maximum outlet flow temperature, and record this on the Commissioning Report. The temperature should not exceed that allowed by the applicable standard or code of practice for each state.

Restore the cold water supply to the valve. After the mixed water temperature has stabilised note

the outlet temperature ensuring the outlet temperature has re-established.

TEST 2

Repeat the above test, except this time quickly isolate the hot water supply to the valve. The outlet flow should quickly slow to a trickle. The trickle should typically be less than 0.4L/min@500kPa down to less than 0.1L/min@100kPa following the isolation.

Restore the hot water supply to the valve. After the mixed water temperature has stabilised, measure and record the outlet temperature, ensuring the outlet temperature has re-established.

Ensure that all details of the Commissioning Report are completed and signed by the relevant signatories, and a copy is kept with the installer and owner of the premises.

The valve is now commissioned and it can be used within the technical limits of operation.

IN-SERVICE TESTING

Enware recommends that Thermostatic Mixers have monthly temperature checks and adjustments as needed during the life of the valves.

The purpose of the in-service tests is to regularly monitor and record the performance of the thermostatic taps. Deterioration in performance can indicate the need for service work on the valve and/or the water supplies.

TESTING PROCEDURE:

Using the same measuring equipment or equipment to the same specification as used in the commissioning of the valve, carry out the following sequence:

- Record the temperature of the mixed water outlet.
- Conduct Shut Down Test 1 - Isolate the cold water supply to the tap to witness the flow slow to a slight drip.
- Conduct Shut Down Test 2 - Isolate the hot water supply to the tap to witness the flow slow to slight drip.
- If the mixed water temperature has changed +/- 2°C from the previous test results, then this could indicate the need for the tap to be serviced.

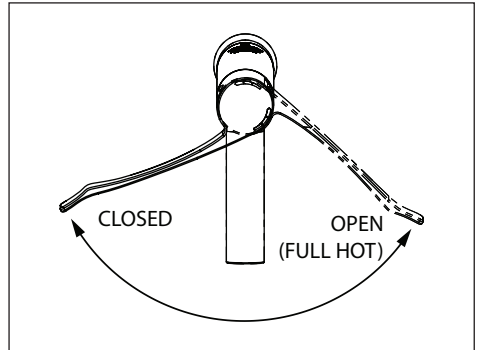


IMAGE 17

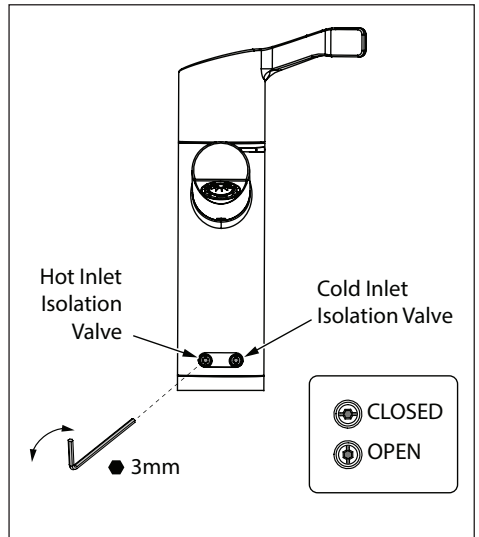


IMAGE 18

thermal flush disinfection procedure

The Aquablend SQX Thermostatic Mixer includes a built-in Thermal Flush feature allowing the facility's maintenance team or licensed service contractors to perform a controlled thermal flush to the Thermostatic Mixer.

NOTE: The thermal flush procedure is optional and does not form part of commissioning and service requirements set out in AS4032.3.

Before commencing the thermal flush, a site-specific procedure must be implemented to control the risk of scalding. Hot water will run directly from the Thermostatic Mixer, and precautions shall be taken to prevent the chance of injury.

THERMAL FLUSH DISINFECTION PROCEDURE:

1. Remove the screw cap [4] and grub screw [3], then remove handle [2], screw [6,7,8] and spline adaptor [9]. Remove front cover [13]. **SEE IMAGE 19**
2. Isolate the Cold water supply by turning the isolation valve 90 degrees into the "OFF" (CLOSED) position. **SEE IMAGE 20**
3. Remove Top Temperature Limiter Ring from the cartridge spline. **SEE IMAGE 21**
4. Re-fit the spline adaptor and handle, and turn the handle all the way to hot. **SEE IMAGE 22**

Warning: Full temperature hot water will flow out of outlet. Care must be taken to prevent scalding.

Maximum hot water temperature allowed for the valve is 70°C for hot water flush, due to limitation of the spout aerator.

5. Once the required time set in the facility's Thermal Flush procedure has passed, turn the handle / spline back to warm water temperature.
6. Turn "ON" (OPEN) cold water supply at the Isolation valve.
7. Set the outlet temperature as required, and fit the Top Temperature Limiter Ring back on. **See Temperature Adjustment Instructions - page 13**
8. Re-install handle and isolation cover. **See Handle Assembly & Positioning - page 11**

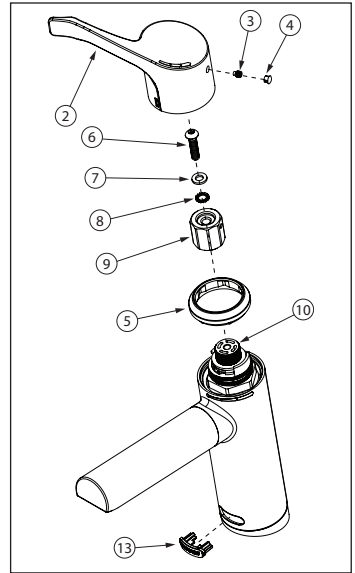


IMAGE 19

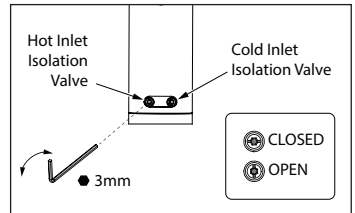


IMAGE 20

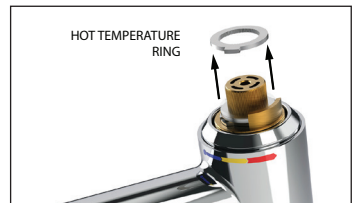


IMAGE 21

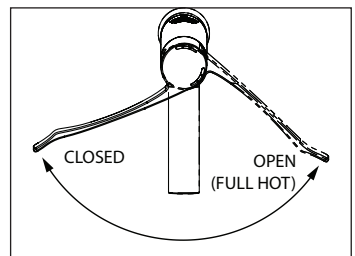


IMAGE 22

maintenance

The AQUABLEND SQX Thermostatic Mixer will only require minimal preventative maintenance work to ensure it operates at its optimum level of performance. The valve should be commissioned and serviced annually, unless the installed conditions dictate more frequent servicing is necessary.

ANNUAL MAINTENANCE PROCEDURE

Every 12 months the AQUABLEND SQX Thermostatic Mixer should be inspected and tested. The valve should be given a light wipe down of the external surface. The valve and surrounding area should be inspected for leaks or water damage and appropriate action taken if required.

Ensure a clean dry work area is available. Firstly isolate the hot and cold supplies to the AQUABLEND SQX Thermostatic Mixer by closing the inlet ball valves found at the base of the mixer.

During the annual service, the SQX mesh strainers need to be removed and cleaned, and the check valves inspected as directed in Servicing the Mixer section below.

The AQUABLEND SQX Thermostatic Mixer should then be commissioned - thermal shut down tests are performed and the temperature is reset as required. (Follow the procedure outlined in Commissioning Procedure on page 14 and Temperature Adjustment on page 13).

If the valve fails to shut down or fails to maintain its set temperature, then refer to Troubleshooting on page 21.

FIVE-YEAR MAINTENANCE PROCEDURE

Every five years the AQUABLEND SQX thermostatic Mixer needs to have a full service carried out. This service consists of the same procedure as the "Annual Maintenance Procedure", and in addition the AQUABLEND SQX Thermostatic Mixer Cartridge must be replaced, as directed in the section below - Servicing the Mixer. [ATMS600L - SQX Thermostatic Mixer Cartridge]

After replacing the thermostatic mixer cartridge, AQUABLEND SQX Thermostatic Mixer should then be commissioned - thermal shut down tests are performed and the temperature is reset as required. (Follow the procedure outlined in Commissioning Procedure on page 14 and Temperature Adjustment on page 13).

If the valve fails to shut down or fails to maintain its set temperature, then refer to Troubleshooting on page 21.

servicing the mixer

TURN OFF WATER

! Prior to servicing the mixer, water supply must be turned off.

1. Remove isolation cover [13], and turn off both hot and cold water supply via Isolation valves. **SEE IMAGE 28 & 23**
2. Open mixer to ensure water supplies have been isolated correctly and no water flows from outlet prior to servicing mixer.

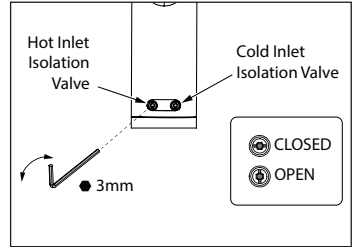


IMAGE 23

ACCESS TO STRAINERS, CHECK VALVES

1. Remove retaining screw [1] located at the back of tap body using a 2.5mm Allen key. **SEE IMAGE 24**
2. Hold the tap body, twist the body 90° slowly but firmly in a twist-lock motion [2], then lift straight up [3] to remove the tap body from hob base. **SEE IMAGE 24**
3. The strainers and check valves can be found within the hob base. **SEE IMAGE 25**

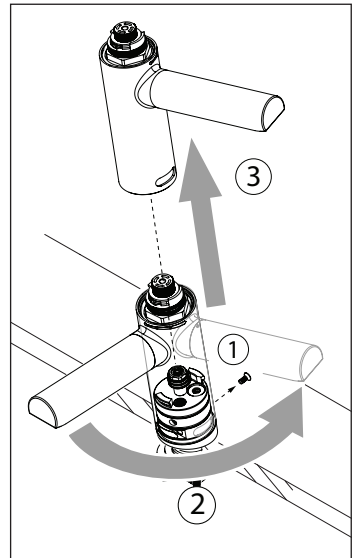


IMAGE 24

STRAINERS

Using an M6 Allen key, unscrew strainer cap, and remove strainer from within cavity. **SEE IMAGE 26**

Strainers should be cleaned with a diluted de-scaling solvent (such as CLR), checked for physical damage and thoroughly rinsed with clean water.

CHECK VALVES

Visually inspect the check valves for any damage or wear. Replace check valves if required.

To remove check valve, use circlip pliers to remove circlip from hob base. With small pliers, gently pull out the check valve. **SEE IMAGE 27**

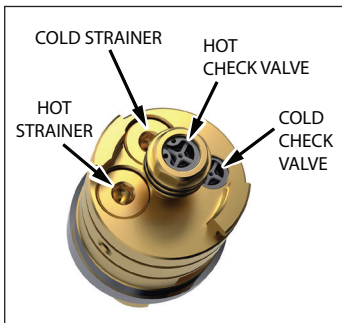


IMAGE 25

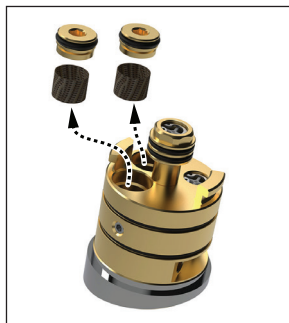


IMAGE 26



IMAGE 27

SQX THERMOSTATIC MIXER CARTRIDGE

Remove the screw cap [4] and grub screw [3], then carefully lift the handle [2] straight up out of position. Remove screw [6,7,8] and spline adaptor [9]. Remove isolation cover [13].

SEE IMAGE 28

Using the supplied cartridge removal tool on the brass headwork, turn the cartridge counter-clockwise until it reaches the end of its threads, and then pull it out of the mixer body. **SEE IMAGE 29 & 30**

IMPORTANT: DO NOT TAKE CARTRIDGE APART

Install new SQX Thermostatic Mixer Cartridge, taking care not to pinch or damage the sealing O-rings on the cartridge.

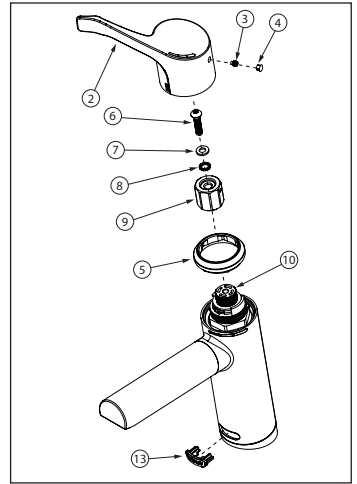


IMAGE 28

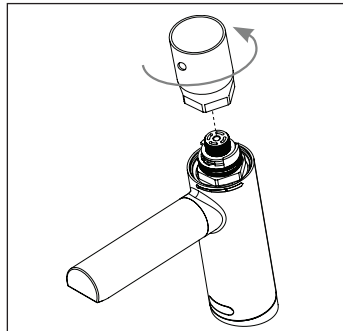


IMAGE 29



IMAGE 30

REMOVABLE SPOUT & AERATOR

Remove grub screw [3] from underside of spout using 2.5mm Allen key, then pull spout straight out. Take out flow controller [15] and clean. **SEE IMAGE 31**

Clean aerator [17] periodically. Unscrew the aerator using aerator key [18], then inspect and reverse rinse aerator to clear any debris. Replace aerator if necessary.

CLEANING

Enware products should be cleaned with a soft damp cloth using only mild liquid detergent or soap and water. Do not use cleaning agents containing a corrosive acid, scouring agent or solvent chemicals. Do not use cream cleaners, as they are abrasive. Use of unsuitable cleaning agents may damage the surface. Any damage caused in this way will not be covered by warranty.

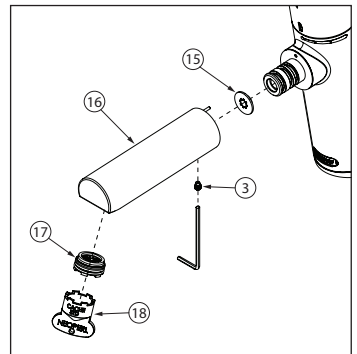
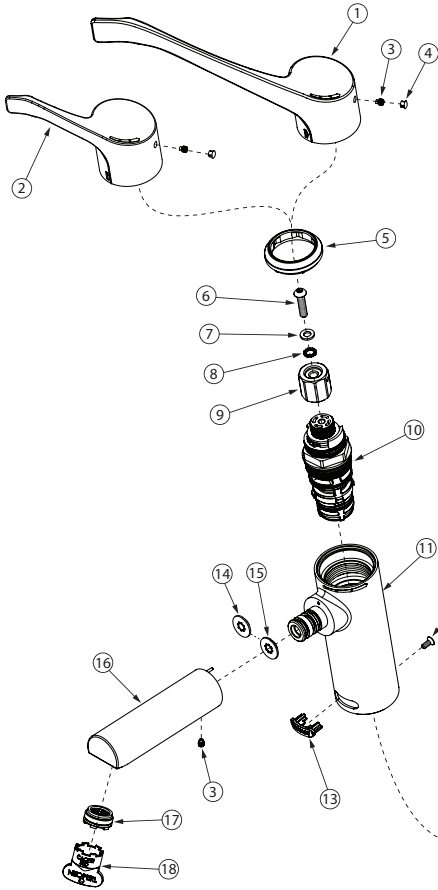
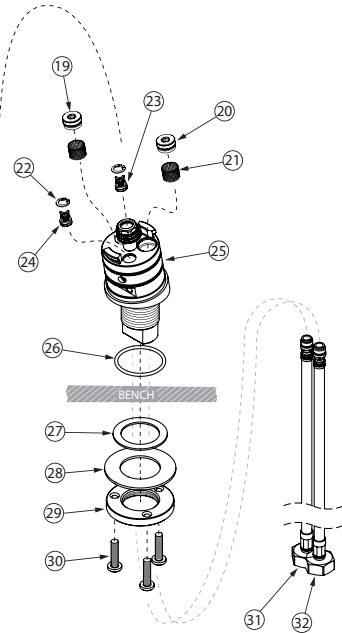


IMAGE 31

spare parts



Description	Sales Code
SQX Cartridge Parts: [10]	ATMS600L
Filter strainers and check valves kit Parts: [19] [20] [21 x2] [22 x2] [23] [24]	ATMS802
SQX Cartridge removal tool	ATMS8100
Isolation valve cover and retaining screw Parts: [13] [12]	ATMS804
Fixing Kit Parts: [26] [27] [28] [29] [30 x3]	ATMS820
Lever handle 100mm Parts: [2] [3] [4]	ATMS815
Lever handle 200mm Parts: [1] [3] [4]	ATMS816
Handle fixing kit and dress ring Parts: [3] [4] [5] [6] [7] [8] [9]	ATMS818
Spout Parts: [16] [3]	ATMS812
Flow controls (4 Lpm, 6 Lpm) and flow straightener, 2x spout O-rings and pin Parts: [14] [15] [17] [18]	ATMS813
Inlet hose H&C (pair) Parts: [31] [32]	ATMS814



troubleshooting

Refer to the following troubleshooting /fault-finding chart for specific problems and solutions. Service instructions are supplied with spare part kits

	FAULT / SYMPTOM	CAUSE	RECTIFICATION
1	The desired mixed water temperature cannot be obtained or valve is difficult to set.	<ul style="list-style-type: none"> • Hot and cold supplies are fitted to wrong connections • Thermostatic cartridge contains debris or damaged • Strainers contain debris • Non-return devices are damaged 	<ul style="list-style-type: none"> • Refit the valve with Hot/Cold supplies fitted to the correct connections • Clean or replace cartridge • Clean strainers ensuring debris is removed • Check non-return device is not jammed, Clean or replace it if necessary
2	The thermostatic mixing valve will not thermally shut down	<ul style="list-style-type: none"> • Hot to mix temperature differential is not 10°C or greater • Thermostatic cartridge contains debris or damaged • Non-return devices are damaged 	<ul style="list-style-type: none"> • Raise hot water temperature • Clean or replace cartridge • Check non-return device is not jammed, Clean or replace it if necessary
3	Mix temperature unstable	<ul style="list-style-type: none"> • Flow rate below 2L/min. • Thermostatic cartridge contains debris or damaged • Strainers contain debris • Non-return devices are damaged 	<ul style="list-style-type: none"> • Rectify any pressure deterioration • Clean or replace cartridge • Clean strainers ensuring debris is removed • Check non-return device is not jammed, Clean or replace it if necessary
4	Mix temperature changing over time	<ul style="list-style-type: none"> • Inlet conditions (pressures or temperatures) are fluctuating • Strainers contain debris 	<ul style="list-style-type: none"> • Install suitable pressure control valves to ensure inlet conditions are within those stated on page 6 • Clean strainers ensuring debris is removed
5	Water is leaking from mixer body	<ul style="list-style-type: none"> • Mixer body O-rings are worn or damaged, or contain debris. 	<ul style="list-style-type: none"> • Replace strainer cap O-rings • Replace hob base sealing O-rings
6	Either full hot or cold flowing from outlet fixture	<ul style="list-style-type: none"> • Upper temperature ring incorrectly set. • Hot/Cold water has migrated to other inlet • Damaged check valves • Refer also to fault/symptom 1 & 2 	<ul style="list-style-type: none"> • Re-set temperature as per instructions on page 13 to between 35 - 46°C as required • Replace faulty check valves
7	Water is not flowing from outlet	<ul style="list-style-type: none"> • Aerator or flow controller is blocked • Hot or cold water failure • Thermostatic cartridge contains debris or damaged • Strainers contain debris 	<ul style="list-style-type: none"> • Remove aerator and spout, clean then reinstall • Restore inlet supplies and check mix water temperature • Clean or replace cartridge • Clean strainers
8	Flow rate reduced or fluctuating	<ul style="list-style-type: none"> • Thermostatic cartridge, strainers or inlet fittings fouled by debris • Dynamic inlet pressures are not within recommended limits 	<ul style="list-style-type: none"> • Check Thermostatic cartridge, strainers and inlet fittings for blockages • Ensure operating conditions are within specified limits and the dynamic inlet pressures are balanced to within +/- 10%
9	Mixed water temperature too hot or cold	<ul style="list-style-type: none"> • Upper temperature ring is incorrectly set or tampered with • Inlet temperatures are not within specified limits 	<ul style="list-style-type: none"> • Re-set temperature as stated on page 13 to between 35 - 45°C as required • Ensure inlet temperatures are within the specified limits of 55 - 85°C for Hot; and 5 - 25°C for Cold.
10	Mixed water temperature doesn't change when the handle is rotated	<ul style="list-style-type: none"> • Thermostatic cartridge contains debris, has failed or is damaged. 	<ul style="list-style-type: none"> • Clean the Cartridge ensuring that all debris is removed and components are not damaged. Replace if necessary
11	Leaking from outlet	<ul style="list-style-type: none"> • Cartridge is damaged or O- rings split. • Supply pressures too high • Cartridge has come loose in mixer body. • Thermostatic cartridge contains debris or damaged. 	<ul style="list-style-type: none"> • Replace cartridge • Check pressure and install a pressure reduction valve • Ensure Thermostatic cartridge is tightened to 10nm in mixer body • Clean or replace cartridge
12	Water comes on when handle is in closed position	<ul style="list-style-type: none"> • Mixer has been installed incorrectly or not tightened to a firm stop. • Lever handle not installed correctly 	<ul style="list-style-type: none"> • Re-install or replace cartridge. Refer to service instructions on page 19 • Adjust position of lever handle. Refer to handle installation on page 11

commissioning / maintenance report

PRINT ALL DETAILS or MARK WITH AN X IN BOXES IN BOXES TO INDICATE CHOICE

PLEASE NOTE:

1. In all cases the Licensee is to submit this report within 7 working days after commissioning and / or servicing the valve.
2. Use a separate form for each valve.
3. The original report is to be given to the owner / occupier and retained on site for a minimum of 7 years.
4. All details are to be filled in. Incomplete reports will not be accepted.

Name of Establishment			
Street Address			
Suburb		State	Post Code
Phone No.		Contact Name	
Date		Work Order No.	

Make and Model of Hot Water Unit

Make of Mixing Valve		Model No	
		Size	

Valve ID No.		Total No. of Mixing Valves on Site / Building	
Cartridge Serial No.			

Valve Location / Building			
Area serviced by valve			

Outlet type (mark with X)	Bath	Basin	Shower
---------------------------	------	-------	--------

Valve installed to requirements of:		
1. The local water supply authority	2. The valve manufacturer / supplier requirements	3. The Australian Standards for Plumbing and Drainage
<input type="checkbox"/> YES <input type="checkbox"/> NO	<input type="checkbox"/> YES <input type="checkbox"/> NO	<input type="checkbox"/> YES <input type="checkbox"/> NO

If NO, give details and action taken:

Hot Water	Pressure	kPa	Cold Water	Pressure	kPa
	Temp	°C		Temp	°C
Cold Water Supply via			Pressure Reducing Valve Fitted	<input type="checkbox"/> YES <input type="checkbox"/> NO	

Details of work carried out: <input type="checkbox"/> Serviced <input type="checkbox"/> Commissioned <input type="checkbox"/> Visually inspected and clean valve components <input type="checkbox"/> Checked function of non-return valve <input type="checkbox"/> Replaced O-rings and lubricate <input type="checkbox"/> Reassemble v Dismantle <input type="checkbox"/> Set temperature <input type="checkbox"/> Thermal shut down test

List of items replaced and part numbers during this visit:	Service Kit No.	
	Other Parts	

Temperature range of warm water at outlet:

Neonatal and children 38-40°C
 Adult 40.5-43.5°C
 Set Temperature (°C):

Date of this service / commissioning:		Date of next service due:	
Previous service carried out by:		Date of previous service:	
Valve installed by:		Date of installation:	

It is hereby certified that all the commissioning work has been carried out by the undersigned in accordance with local plumbing requirements for Thermostatic Mixing Valves

Contractor Business Name		
Contractor Name (print)		Contractor Lic / Cert No
Signature Licensed Plumber		
Contractors Phone No		Date
Owner / Occupier Signature		Date

NOTE: A duplicate copy of this report is to be retained at the site for any inspection by authorised persons

product warranty statement - WATTS AUSTRALIA

EFFECTIVE FROM 20 November 2023

This Warranty Statement applies to products supplied by Australian Valve Group Pty Ltd (ACN 068 227 270) (**AVG**) or Enware Pty Ltd (ACN 662 302 767) (**Enware**) (each of AVG and Enware, a Supplier) and installed within Australia.

Subject to the terms and conditions outlined in this Warranty Statement, each Supplier warrants to its customers that a product supplied by it (**Product**) will be free from all defects in material and workmanship under normal usage for the applicable Warranty Period (as set out in the Warranty Table below). The Warranty Period commences from the date of delivery of the relevant Product.

1. Conditions

The warranty provided under this Warranty Statement will not apply in respect of a Product (or any Product defect, fault or resulting damage) if:

- (a) the Product is not installed and maintained in accordance with the requirements of the applicable laws, standards and codes (including, without limitation, to the National Construction Code Volume Three – Plumbing Code of Australia, associated reference standards as applicable at the time and AS/NZS 3500);
- (b) the Product is not installed and maintained by a qualified technician in accordance with the relevant installation and operation manual and instructions; and
- (c) any Product defect, faulty or resulting damage arises from:
 - (i) failure by you or any other person to follow the relevant manual or instructions (relating to the handling, storage, installation, fitting, connection, adjustment, maintenance or repair of the Product) published or provided by the Supplier;
 - (ii) failure by you or any other person responsible for the fitting, installation, or other work on the Product to follow or conform to applicable laws, standards and codes (including, without limitation to, the AS/NZ 3500 set of Standards, all applicable State and Territory Plumbing Codes, the Plumbing Code of Australia and directions and requirements of local and other statutory authorities);
 - (iii) any parts or components not manufactured by the Supplier (or otherwise not authorised by the Supplier) are installed or combined with the Product, without the prior authorisation of the Supplier; or
 - (iv) any act or circumstance beyond our control including, without limitation to, accident, abnormal use, vandalism, fouling caused by foreign material, damage from adverse water conditions, chemical, acts of God, damage to buildings, other structures and infrastructure and loss or damage during transit or transportation of the Product, or any abuse, misuse, misapplication, improper installation or connection, or improper maintenance or alteration of the Product.

2. Make a claim

To make a claim under this Warranty Statement, you must notify the relevant Supplier in writing within 7 days of any alleged defect in the Product coming to your attention and provide the Supplier with proof of your purchase of the Product to the relevant Supplier:

- (a) If the Product is supplied by **AVG**, please contact AVG by telephone at 1800 284 287, or by email via its online portal <https://www.wattsau.com.au/support>.
- (b) If the Product is supplied by **Enware**, please complete the Product Service Request form (ENF091), which is available on request from our office (see contact details below), or online via <https://www.enware.com.au/warranty-service-form/>. All notifications and accompanying forms must be sent to Enware marked for the attention of Enware, 9 Endeavour Road, Caringbah NSW 2229. Enware can also be contacted by telephone (1300 369 273) or by email (info@enware.com.au).

On receipt of a notification from you of a claim under this Warranty Statement, the relevant Supplier may contact you requesting you provide reasonably additional evidence, information or details about your claim, or requiring that the relevant Product should be returned to the Supplier (in accordance with the Supplier's instructions) for inspection and testing.

Your failure to comply with any such request within a reasonable amount of time may result in your claim under this Warranty Statement being rejected.

3. Our responsibilities

(a) In the event that the Supplier is reasonably satisfied that there is a defect in the relevant Product within the applicable Warranty Period, the Supplier will, at its option, replace the Product, supply an equivalent product or repair the Product, free of charge. Your costs in making a warranty claim under this Warranty Statement, including any costs in relation to freight, collection, delivery and installation, are to be borne and paid by you. However, if in respect of a Product, it is indicated in the Warranty Table that labour support will be provided, and the Supplier is reasonably satisfied that a defect in the Product takes place during the period that labour support will be provided as indicated in the Warranty Table, the Supplier will bear the costs for delivery, repair and installation of the replacement Product (as applicable).

(b) TO THE EXTENT PERMITTED BY LAW AND SUBJECT TO PARAGRAPH 4 BELOW AND THE OPERATION OF THE AUSTRALIAN CONSUMER LAW:

- (i) THE WARRANTY SET OUT IN THIS WARRANTY STATEMENT IS GIVEN EXPRESSLY AND IS THE ONLY WARRANTY GIVEN BY THE SUPPLIER WITH RESPECT TO THE RELEVANT PRODUCT;
- (ii) THE SUPPLIER MAKES NO OTHER WARRANTIES, EXPRESS OR IMPLIED;
- (iii) THE SUPPLIER HEREBY SPECIFICALLY DISCLAIMS ALL OTHER WARRANTIES, EXPRESS OR IMPLIED, INCLUDING BUT NOT LIMITED TO, THE IMPLIED WARRANTIES OF MERCHANTABILITY AND FITNESS FOR A PARTICULAR PURPOSE; AND
- (iv) THE REMEDY DESCRIBED IN THIS WARRANTY STATEMENT SHALL CONSTITUTE THE SOLE AND EXCLUSIVE REMEDY FOR BREACH OF WARRANTY, AND THE SUPPLIER SHALL NOT BE RESPONSIBLE FOR ANY INCIDENTAL, SPECIAL OR CONSEQUENTIAL DAMAGES, OR LOST PROFITS OR THE COST OF REPAIRING OR REPLACING OTHER PROPERTY WHICH IS DAMAGED IF THE PRODUCT DOES NOT WORK PROPERLY.

4. Australian Consumer Law

This paragraph 4 applies if you are a 'Consumer' (as defined in section 3 of the Australian Consumer Law (**ACL**)) and the Product or services supplied to you falls within the goods or services which, for the purposes of the ACL, are of a kind ordinarily acquired for personal, domestic or household use or consumption.

The Products and services provided by the Supplier come with guarantees that cannot be excluded under the ACL, and noting in this Warranty Statement should be interpreted as attempting to exclude, restrict or modify such guarantees or your rights under the ACL. For major failures with any services, you are entitled:

- (c) to cancel your service contract with us; and
- (d) to a refund for the unused portion, or to compensation for its reduced value.

You are also entitled to choose a refund or replacement for major failures with Products. If a failure with the Product or a service does not amount to a major failure, you are entitled to have the failure rectified in a reasonable time. If this is not done you are entitled to a refund for the Products and to cancel the contract for the service and obtain a refund of any unused portion. You are also entitled to be compensated for any other reasonably foreseeable loss or damage from a failure in the Products or service.

5. Warranty table

*the applicable period commences on the date of delivery of the Product.

PRODUCT GROUP	PRODUCT SERIES CODES	WARRANTY PERIOD (YEARS)*	LABOUR SUPPORT (YEARS)
Aquablend Thermostatic Mixing Valves and Spare Parts	ATM, ATMV	5	5