

Aquablend eSQX LF Touch-Free Point-of-Use Thermostatic Wall Mixer Thermal Flush - Back of Wall Component - 3V Battery

Aquablend eSQX MK2 touch-free thermostatic mixer solution suitable for Type A, Type B and all Commercial Basin applications.

Designed and engineered in Australia to deliver pre-mixed warm water using advanced infrared touch free sensors for enhanced infection control and cross-contamination prevention.

KEY FEATURES

- Integral TMV with adjustable temperature ensures ultimate user comfort
- Thermal Flush function for fast and efficient thermal disinfection
- Low voltage 3V mains power supply (2 x 1.5V AA Lithium- Approx 5+ years life)
- Self draining copper lined spout for advanced anti-bacterial/legionella protection
- Advanced PSD low energy sensor technology with improved detection area and an extended range of App-based settings
- New low energy consumption solenoid valve with self-cleaning membrane for extended lifetime
- Bluetooth connectivity allows on the spot adjustment of functionality parameters to suit user needs and preferences
- Sensor can be programmed on site for various functions:
 - maximum flow time, Intelligent After Flow, periodic flush, and sensor sensitivity (via App.)
- Compatible with Smartflow Monitoring System for real-time 24/7 TMV monitoring and reporting
- Fast and easy installation in-wall cabinet
- Improved maintenance accessibility with integral isolation valves
- Back and front of wall components are ordered and supplied separately to meet construction needs
- Requires eSQX Front-of-Wall component



PRODUCT CODE

ATM620L

Aquablend eSQX LF Touch-Free Point-of-Use Thermostatic Wall Mixer Thermal Flush - Back of Wall Component - 3V Battery



Products are to be installed in accordance with the Plumbing Code of Australia and AS/NZS3500. Reference should also be made to the Australasian Health Facility Guidelines (AHFG), ABCB and Local Government regulations when considering the choice of, and the installation of these products.

This product is compliant with the Lead Free requirements of NCC Volume Three.

Due to ongoing Research and Development, specifications may change without notice. Component specifications may change on some export models.

Refer to warranty statement for warranty details - www.enware.com.au/warranty.

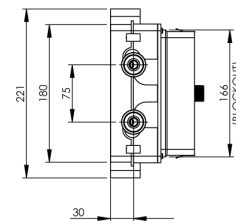
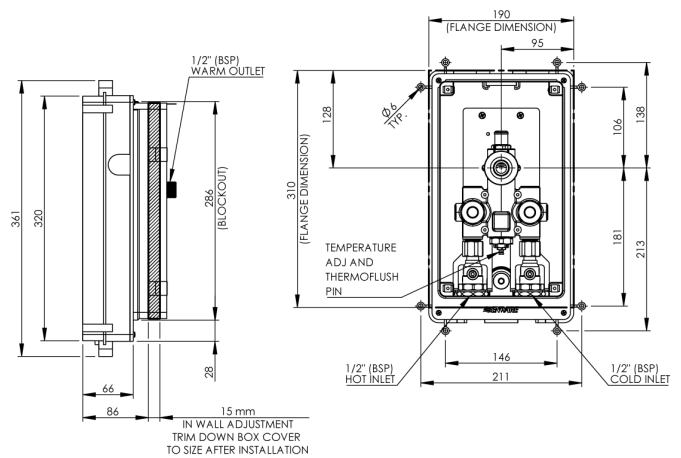
Aquablend eSQX LF Touch-Free Point-of-Use Thermostatic Wall Mixer Thermal Flush - Back of Wall Component - 3V Battery

TECHNICAL DATA

Thermostatic Temperature Range	Min 35°C Max 46°C (+/- 2°C) Set during installation/ commissioning
Dynamic Inlet Pressures*	Min 20 kPa Max 500 kPa
Static Inlet Pressure	Max. 1000kPa For testing purposes/ system commissioning
Hot Temperature Supply Range	Min 55°C Max 85°C
Cold Temperature Supply Range ^	Min 5°C Max 25°C
Minimum Temperature Differential	10°C Between hot supply and outlet mix temperature, required to ensure correct function of valve
Minimum Flow Rate	2L/min
Inlet Connection	1/2" BSP
Sensor Power Supply	3V (Battery)

* AS3500.4-2021 Clause 10.4.2 - 10% maximum dynamic pressure differential between hot and cold supplies

^ Where cold inlet temperature may exceed recommended range due to seasonal variation, a 5°C temperature differential between the inlet cold supply and outlet mixed temperature setting must be maintained.



BOTTOM VIEW

FRONT-OF-WALL COMPONENT OPTIONS

ATAMC1L6L	Auto Sense 200mm Spout 4/6lpm Laminar Mains/Battery - Front of Wall Component
ATAMC2L6L	Auto Sense 230mm Spout 4/6lpm Laminar Mains/Battery - Front of Wall Component
ATWMC1L6L	On Demand 200mm Spout 4/6lpm Laminar Mains/Battery - Front of Wall Component
ATWMC2L6L	On Demand 230mm Spout 4/6lpm Laminar Mains/Battery - Front of Wall Component

