

# Aquablend Restore Thermostatic Sequential Wall Mixer - Back-of-Wall Assembly

Enware's Restore SQ range of Mental Health Secure Ensuite basin and shower mixers help to normalise the bathroom environment while providing safe, secure and comforting experiences.

Supplied as Front-of-Wall and Back-of-Wall Assemblies.

## KEY FEATURES

- Thermostatic POU hybrid mixer with warm and cold water supply for adjacent ensuite fixtures
- Designed to promote good water health with sequential style mixing always closing through the cold position
- Lead-Free Brass Mixer is easy to install in its in-wall installation box with variable depth adjustment
- Front of wall surround can be permanently fixed and sealed to wall. Access for maintenance is made through secure removeable fascia, avoiding wall damage or breaching of wall seal
- Normalized shower mixer design to assist rehabilitation with easy to clean bright chrome finish
- Patient safety at the heart of the design with anti-ligature handle tested to TS001:2013 (Grade A4)
- Robust design for challenging environments with IK10 impact tested front-of-wall construction
- Low profile ergonomic handle for easy temperature adjustment and water control
- Supplied as Front of Wall (FOW) and Back of Wall (BOW) assemblies for easy installation



## PRODUCT CODE

ATMHE608RH-BOW	Aquablend Restore Thermostatic Sequential Wall Mixer - Back-of-Wall Assembly
----------------	--

Products are to be installed in accordance with the Plumbing Code of Australia and AS/NZS3500.

Reference should also be made to the Australasian Health Facility Guidelines (AHFG), ABCB and Local Government regulations when considering the choice of, and the installation of these products.

Due to ongoing Research and Development, specifications may change without notice.

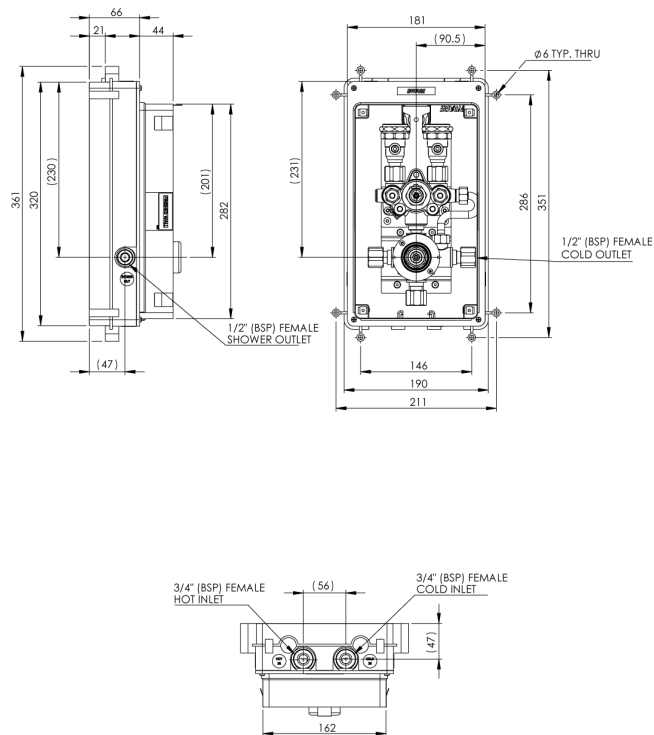
Component specifications may change on some export models.

Refer to warranty statement for warranty details - [www.enware.com.au/warranty](http://www.enware.com.au/warranty).

# Aquablend Restore Thermostatic Sequential Wall Mixer - Back-of-Wall Assembly

## TECHNICAL DATA

Facia Plate Material Grade	Stainless Steel
Minimum Cold Temperature Supply	5°C
Maximum Cold Temperature Supply	30°C
Minimum Hot Temperature Supply	55°C
Maximum Hot Temperature Supply	90°C
Minimum Thermostatic Temperature	35°C
Maximum Thermostatic Temperature	48°C
Minimum Dynamic Supply Pressure	20 kPa
Maximum Dynamic Supply Pressure	500 kPa
Maximum Static Pressure	1000 kPa
	For testing purposes/ system commissioning
Inlet Pressure Ratio	$H - PL = H^1$ ; $C - PL = C^1$ ; $H^1 : C^1 = \text{Max } 10:1$ ; $C^1 : H^1 = \text{Max } 10:1$ (H = Hot inlet pressure, C = Cold inlet pressure, PL = Pressure Loss)
Minimum Flow Rate	4L/min
Maximum Flow Rate	23L/min@300kPa pressure loss
Inlet Connection	20mm (3/4"BSP) FI
Outlet Connection	15mm (1/2"BSP) FI
Technical Notes	Requires Front-of-Wall component ATMRHSQ-FOW
	Thermostatic Temperature Range: 35°C to 48°C (+/- 2 °C), set during installation/ commissioning
	Dynamic Inlet Pressures: For optimum operation it is recommended that the hot and cold water supply pressures be balanced within +/- 10% for both static and dynamic pressures.
	Hot to Mix Temperature Differential for Stable Operation: Min 10°C
	Cold to Mix Temperature Differential for Stable Operation: Min 10°C
	Cold Supply Inlet Temperature: Max 30°C - Where cold inlet temperature may exceed recommended range due to seasonal variation, a 5°C temperature differential between the inlet cold supply and outlet mixed temperature setting must be maintained.



## REQUIRED OPTIONS

ATMRHSQ-FOW	Aquablend Restore Thermostatic Sequential Wall Mixer - Front-of-Wall Assembly
-------------	---