

Aquablend Restore Thermostatic Sequential Wall Mixer - Back-of-Wall Assembly

Enware's Restore SQ range of Mental Health Secure Ensuite basin and shower mixers help to normalise the bathroom environment while providing safe, secure and comforting experiences.

Supplied as Front-of-Wall and Back-of-Wall Assemblies.

KEY FEATURES

- Thermostatic POU hybrid mixer with warm and cold water supply for adjacent ensuite fixtures
- Designed to promote good water health with sequential style mixing always closing through the cold position
- Lead-Free Brass Mixer is easy to install in its in-wall installation box with variable depth adjustment
- Front of wall surround can be permanently fixed and sealed to wall. Access for maintenance is made through secure removeable fascia, avoiding wall damage or breaching of wall seal.
- Normalized shower mixer design to assist rehabilitation with easy to clean bright chrome finish
- Patient safety at the heart of the design with anti-ligature handle tested to TS001:2013 (Grade A4)
- Robust design for challenging environments with IK10 impact tested front-of-wall construction
- Low profile ergonomic handle for easy temperature adjustment and water control
- Supplied as Front of Wall (FOW) and Back of Wall (BOW) assemblies for easy installation



PRODUCT CODE

ATMHE608RH-BOW	Aquablend Restore Thermostatic Sequential Wall Mixer - Back-of-Wall Assembly
----------------	--



Products are to be installed in accordance with the Plumbing Code of Australia and AS/NZS3500. Reference should also be made to the Australasian Health Facility Guidelines (AHFG), ABCB and Local Government regulations when considering the choice of, and the installation of these products.

Due to ongoing Research and Development, specifications may change without notice. Component specifications may change on some export models.

Refer to warranty statement for warranty details - www.enware.com.au/warranty.

Low Lead (0.25% actual) Content Brass is used for the Health TMV and 4 way mixer.

Watermark Certification for AS4032 applies to TMV component of this product. Watermark Certification for AS3718 applies to Mixer component.

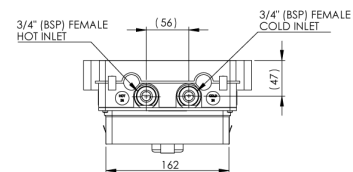
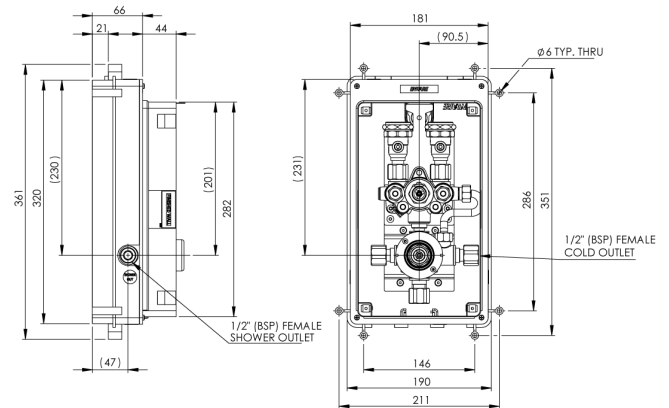
Aquablend Restore Thermostatic Sequential Wall Mixer - Back-of-Wall Assembly

TECHNICAL DATA

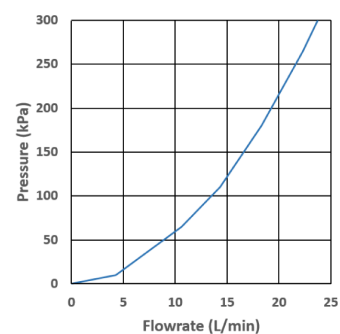
Thermostatic Temperature Range	Min 35°C Max 48°C (+/- 2°C) Set during installation/ commissioning
Dynamic Inlet Pressures*	Min 20 kPa Max 500 kPa
Static Inlet Pressure	Max. 1000kPa For testing purposes/ system commissioning
Hot Temperature Supply Range	Min 55°C Max 90°C
Cold Temperature Supply Range ^	Min 5°C Max 30°C
Minimum Temperature Differential	10°C Between hot supply and outlet mix temperature, required to ensure correct function of valve
Minimum Flow Rate	4 L/min
Maximum Flow Rate - Thermostatic Mixing Valve	23 L/min @300 kPa pressure loss as per flow sizing Graph
Inlet Connections	3/4" BSP (20mm)
Outlet Connections	1/2" BSP (15mm)

* AS3500.4-2021 Clause 10.4.2 - 10% maximum dynamic pressure differential between hot and cold supplies

^ Where cold inlet temperature may exceed recommended range due to seasonal variation, a 5°C temperature differential between the inlet cold supply and outlet mixed temperature setting must be maintained.



PRESSURE LOSS vs FLOW RATE



FRONT OF WALL COMPONENT

ATMRHSQ-FOW	Aquablend Restore Thermostatic Sequential Wall Mixer - Front-of-Wall Assembly
-------------	---