

Aquablend 1500 TMV - Lift Lever Thermal Flush - in 430x500 SS Cabinet - HW/CW Inlets at Top, WW Pipe at Bottom and PRVs on inlets - Smartflow - No Lid

Aquablend 1500 Thermostatic Mixing Valve Pre-Plumbed in Stainless Steel Recess Wall Cabinet.

The proven performance, reliability and low 'whole of life' cost makes Aquablend a popular choice with specifiers, engineers, plumbers and property owners. With the inclusion of the thermal flush feature, maintaining a healthy water service has never been easier.

Suitable for health and general applications.

NSW Health approval for use in healthcare in NSW.



KEY FEATURES

- Lift Lever Thermal Flush activation incorporated within the headworks for faster, safer, more efficient thermal disinfection capability
- Manufactured from Lead Free brass components - including bypass fittings
- Scald and thermal shock protection with rapid thermal shut-off should either the cold or hot water supply fail
- Highly responsive temperature control, maintaining outlet temperature within +/- 2°C under changing inlet temperature and pressure conditions
- Delivers high flow at low pressure loss
- Supplied complete with isolating valves, non-return valves and dual stage strainers incorporating temperature/pressure test ports
- Includes Watts 20mm PRV's to Hot and Cold Inlets. Adjustable set at 400kPa. Helps prevent excursion outside AS/NZS3500 pressure recommendations
- Hot and Cold Inlets through top of cabinet with Warm at bottom- suits reticulated supply of Hot and Cold water at high level
- Pipework is designed to reduce flow restrictions and minimise bacterial capture points and reduce the risk of bacterial contamination
- Smartflow enabled with mixing chamber and probe for connection to Smartflow Warm Water Monitoring System
- Flexible installation - can be upside down or sideways,
- Suitable stainless steel lid options are available:
 - ATMSHL-430 - Hinged Lid with wall flange
 - ATMSSEC-430 - Secure/ Heavy Duty Lid
- Standards licensed to AS4032.1 - Thermostatic Mixing Valves
- NSW Health Approved

PRODUCT CODE

ATMS701PRVSF-430	Aquablend 1500 TMV - Lift Lever Thermal Flush - in 430x500 SS Cabinet - HW/CW Inlets at Top, WW Pipe at Bottom and PRVs on inlets - Smartflow - No Lid
------------------	--------------------------------------------------------------------------------------------------------------------------------------------------------



Due to ongoing Research and Development, specifications may change without notice.

Component specifications may change on some export models.

Refer to warranty statement for warranty details - www.enware.com.au/warranty.

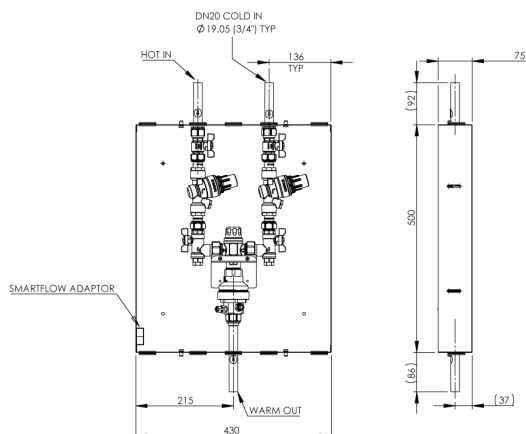
Products are to be installed in accordance with the Plumbing Code of Australia and AS/NZS3500.

Reference should also be made to the Australasian Health Facility Guidelines (AHFG), ABCB and Local Government regulations when considering the choice of, and the installation of these products.

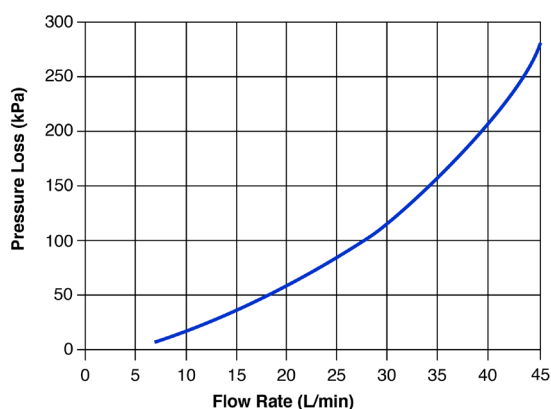
Aquablend 1500 TMV - Lift Lever Thermal Flush - in 430x500 SS Cabinet - HW/CW Inlets at Top, WW Pipe at Bottom and PRVs on inlets - Smartflow - No Lid

TECHNICAL DATA

Thermostatic Temperature Range	Min 35°C Max 48°C (+/- 2°C) Set during installation/ commissioning
Dynamic Inlet Pressures*	Min 20 kPa Max 500 kPa
Static Inlet Pressure	Max. 1600kPa For testing purposes/ system commissioning
Hot Temperature Supply Range	Min 55°C Max 90°C
Cold Temperature Supply Range ^	Min 5°C Max 30°C
Minimum Temperature Differential	10°C Between hot supply and outlet mix temperature, required to ensure correct function of valve
Inlet Pressure Ratio	H - PL = H¹ C - PL = C¹ H¹ : C¹ = Max 10:1 C¹ : H¹ = Max 10:1 H = Hot inlet pressure C = Cold inlet pressure PL = Pressure Loss
Inlet Connection	20mm (Nom.) OD Copper tails
Outlet Connection	20mm (Nom.) OD Copper tails
Minimum Flow Rate	Min. 2 L/min (Min. 4L/min recommended for stable outlet temperature)
Maximum Flow Rate (20mm)	45 L/min (39 L/min@200 kPa pressure loss as per flow sizing graph)
Valve Material	Nickel plated lead-free brass
* AS3500.4-2021 Clause 10.4.2 - 10% maximum dynamic pressure differential between hot and cold supplies	
^ Where cold inlet temperature may exceed recommended range due to seasonal variation, a 5°C temperature differential between the inlet cold supply and outlet mixed temperature setting must be maintained.	



HEAD LOSS CHARACTERISTICS



CABINET LID OPTIONS

ATMSHL-430	Aquablend: Key Lockable Hinged Lid & Surround - Stainless Steel - 430mm
ATMSSEC-430	Heavy Duty Secure Recess Lid - Torx Security Screws - 430mm

SPARE PARTS

ATMS242L	Spare Parts: Aquablend 5-Year Upgrade Service Kit with Lift Lever - Lead Free
ATM714	Aquablend: 1500 Lead Free Thermostatic Mixing Valve with Thermal Flush Lift Lever - 20mm Inlet with 20/25mm Outlet