

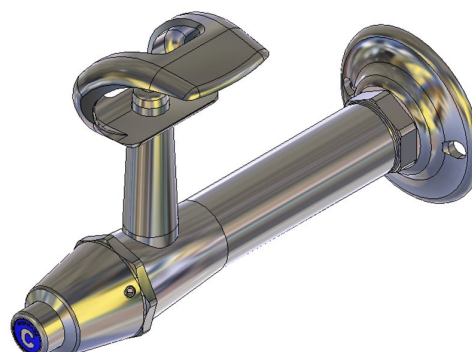
# Type 100 Wall Mounted Fountain - Button Action

A wall mounted self-closing fountain for dispensing drinking water generally used above a basin or in multiples in line above a drinking trough. The fixed metal mouth guard prevents unnecessary user contact with the water outlet.

An adjustable flow control allows the height of the drinking water stream to be set according to the site conditions. The two fixing screw holes in the wall flange allows the fountain to be secured in place.

## KEY FEATURES

- Vandal resistant design
- Self-closing mechanism
- DR Brass construction
- Integral adjustable flow regulator



## PRODUCT CODE

BUB219B

Type 100 Wall Mounted Fountain - Button Action



Products are to be installed in accordance with the Plumbing Code of Australia and AS/NZS3500. Reference should also be made to the Australasian Health Facility Guidelines (AHFG), ABCB and Local Government regulations when considering the choice of, and the installation of these products.

This product is compliant with the Lead Free requirements of NCC Volume Three.

Due to ongoing Research and Development, specifications may change without notice. Component specifications may change on some export models.

Refer to warranty statement for warranty details - [www.enware.com.au/warranty](http://www.enware.com.au/warranty).

## TECHNICAL DATA

Inlet Connection	1/2" BSP (15mm)
Recommended Pressure	50 kPa – 500 kPa
Maximum Static Pressure	1200kPa
Standard WELS	6 Stars
Standard WELS Flow Rate	2.5 L/min
Recommended Temperature	5°C - 30°C
Maximum Working Temperature	50°C
Finish	Chrome
Valve Type	Spring Action

