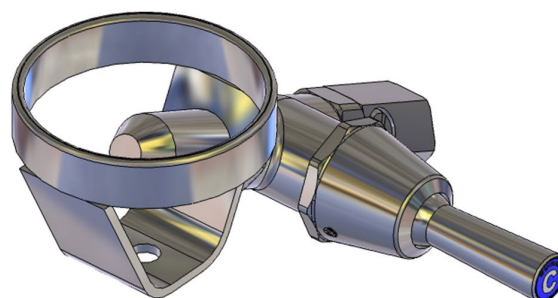


Type 63 Angled Bubbler - Lever Action for Wallsend Trough

Enware's self-closing drinking fountains and bubblers are constructed from dezincification resistant (DR) brass and are Watermark Licensed to AS 3718. Featuring a vandal resistant handle, a durable chrome plated finish and an integral adjustable flow regulator allowing onsite control of the flow of water from the outlet. The unique valve design provides an effective, low maintenance mechanism for a range of flow conditions. The tapware and bubblers are serviceable with all wearing components replaceable, thus providing a longer life.



KEY FEATURES

- Vandal resistant design
- Durable chrome plated finish
- Self-closing mechanism
- DR Brass construction
- Integral adjustable flow regulator
- Suits Wallsend pattern angled back trough

PRODUCT CODE

BUB224L

Type 63 Angled Bubbler - Lever Action for Wallsend Trough



Products are to be installed in accordance with the Plumbing Code of Australia and AS/NZS3500. Reference should also be made to the Australasian Health Facility Guidelines (AHFG), ABCB and Local Government regulations when considering the choice of, and the installation of these products.

This product is compliant with the Lead Free requirements of NCC Volume Three.

Due to ongoing Research and Development, specifications may change without notice. Component specifications may change on some export models.

Refer to warranty statement for warranty details - www.enware.com.au/warranty.

TECHNICAL DATA

Inlet Connection	1/2" BSP (15mm)
Recommended Pressure	50 kPa – 500 kPa
Maximum Static Pressure	1200kPa
Standard WELS	6 Stars
Standard WELS Flow Rate	2 L/min
Recommended Temperature	5°C - 30°C
Maximum Working Temperature	50°C
Finish	Chrome
Valve Type	Spring Action

