

# Hob Mounted Bottle Filler - Push Button Action

## Refill and Refresh

It goes without saying that water is essential to our health and wellbeing and super important to keep our children well hydrated while at school.

Encouraging good hydration habits means students need to have easy access to drinking water. Enware's range of bottle fillers are an easy way for school children to refill water bottles regularly throughout the day.

## KEY FEATURES

- Vandal resistant design: Push button and concealed aerator designed to be removed using a hand tool only
- Valve has been designed for the rigours of daily use
- Robust design - chrome plated brass body
- Easy push button activation
- Self-closing spring action mechanism
- 5 lpm Laminar Flow



## PRODUCT CODE

BUB302B

Hob Mounted Bottle Filler - Push Button  
Action



Products are to be installed in accordance with the Plumbing Code of Australia and AS/NZS3500. Reference should also be made to the Australasian Health Facility Guidelines (AHFG), ABCB and Local Government regulations when considering the choice of, and the installation of these products.

This product is compliant with the Lead Free requirements of NCC Volume Three.

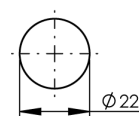
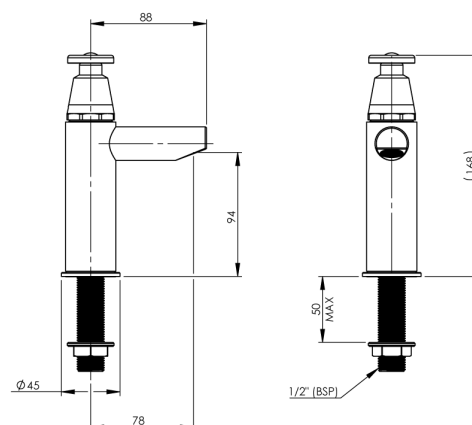
Due to ongoing Research and Development, specifications may change without notice. Component specifications may change on some export models.

Refer to warranty statement for warranty details - [www.enware.com.au/warranty](http://www.enware.com.au/warranty).

# Hob Mounted Bottle Filler - Push Button Action

## TECHNICAL DATA

Inlet Connection	1/2" BSP (15mm)
Recommended Pressure	50 kPa – 500 kPa
Maximum Static Pressure	1200kPa
Flow Rate	6 L/min
Recommended Temperature	5°C - 30°C
Maximum Working Temperature	50°C
Finish	Chrome
Valve Type	Spring Action
Inlet Connection	1/2" BSP (15mm)
Max Bench Thickness	50mm



INSTALLATION DETAIL  
(BENCHTOP CUTOUT)