

Hob Mounted Gooseneck Bottle Filler with Swivel and Fixed Spout

Refill and Refresh. It goes without saying that water is essential to our health and wellbeing and super important to keep our children well hydrated while at school. Encouraging good hydration habits means students need to have easy access to drinking water. Enware's bottle fillers are an easy way for school children to refill water bottles regularly throughout the day.

KEY FEATURES

- Vandal resistant design - handle and concealed aerator designed to be removed using a hand tool only
- Spout can be Fixed or Swivel. (Swivel spout with locking mechanism for fixed spout)
- 8 lpm laminar flow
- Valve has been designed for the rigours of daily use
- Robust design - chrome plated brass body
- Self-closing mechanism
- Left or Right Handed
- Anti-rotation pins



PRODUCT CODE

BUBBFGFH-C150	Hob Mounted Gooseneck Bottle Filler with Swivel and Fixed Spout
---------------	---



Products are to be installed in accordance with the Plumbing Code of Australia and AS/NZS3500. Reference should also be made to the Australasian Health Facility Guidelines (AHFG), ABCB and Local Government regulations when considering the choice of, and the installation of these products.

This product is compliant with the Lead Free requirements of NCC Volume Three.

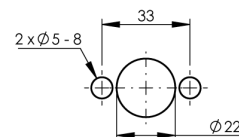
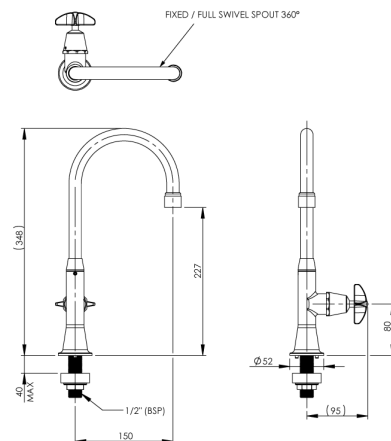
Due to ongoing Research and Development, specifications may change without notice. Component specifications may change on some export models.

Refer to warranty statement for warranty details - www.enware.com.au/warranty.

Hob Mounted Gooseneck Bottle Filler with Swivel and Fixed Spout

TECHNICAL DATA

Inlet Connection	1/2" BSP (15mm)
Recommended Pressure	50 kPa – 500 kPa
Maximum Static Pressure	1200 kPa
Flow Rate	8 L/min
Recommended Temperature	5°C - 30°C
Maximum Working Temperature	50°C
Finish	Chrome
Valve Type	Spring Action
Inlet Connection	1/2" BSP (15mm) MI
Max Bench Thickness	40mm



INSTALLATION DETAIL (BENCHTOP CUT OUT)

PLEASE CHECK LOCKING PIN
POSITIONS BEFORE INSTALLATION
AS ORIENTATION MAY VARY