

The Custodian® Shower Rose - Duct Mounted

CNSHRS-SD

Providing Safety and Security With
Enhanced Comfort and Care

The Custodian® Shower Rose is designed to provide the user superior showering comfort. The design is both Anti-Ligature and high security, available for on wall or duct mounting.

KEY FEATURES

- Designed to exceed anti-ligature requirements of TS001-2013
- Anti-rotation pin
- Fixed 200mm tail to suit duct mounting (wall thickness 70 - 175mm)
- Constructed from DR brass
- Durable bright chrome finish
- WELS: 4 Star Rating (7.0 L/min)



PRODUCT CODES

CNSHRS-SD

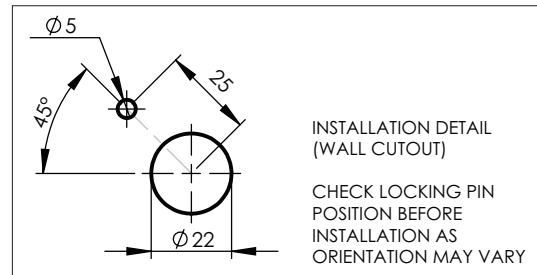
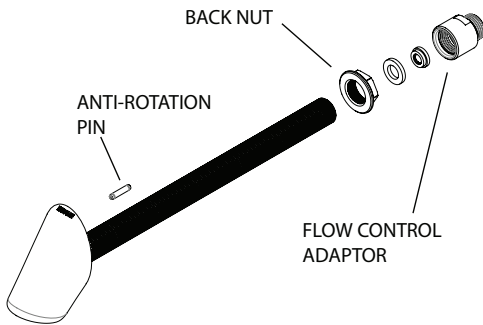
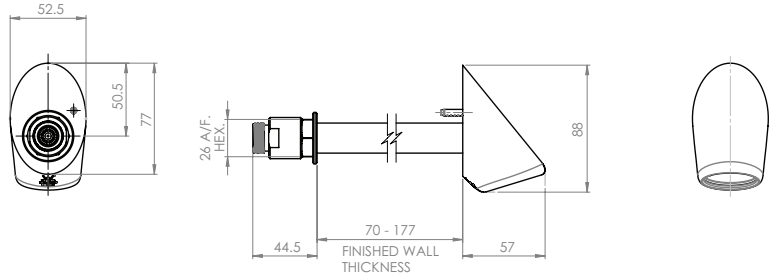
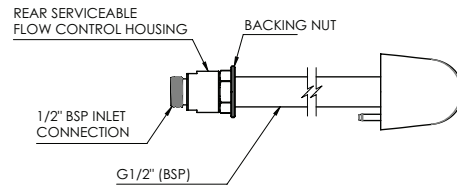
Custodian Duct Mounted Shower Rose

Version 2.0__06Jul22

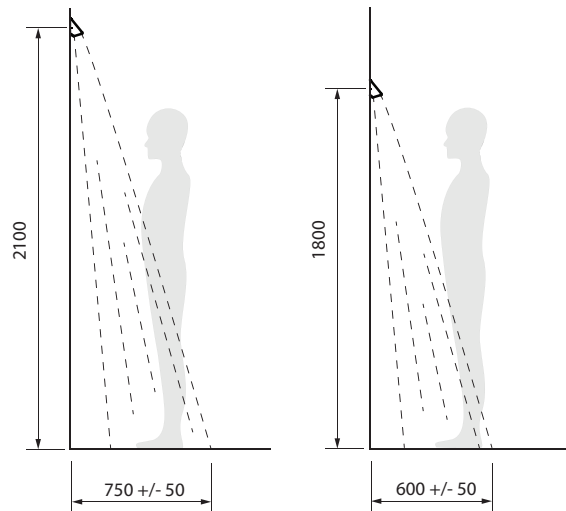
The Custodian® Shower Rose - Duct Mounted

TECHNICAL INFORMATION

Inlet Connection	1/2" BSP (15mm) male
Operating Working Pressure	50 - 500 kPa
Flow Rate	7 L/min (WELS 4 Star)
Maximum Water Temperature	70 °C



Shower Spray Pattern



Enware products are to be installed in accordance with the Plumbing Code of Australia and AS/NZS3500. Reference should also be made to the Australasian Health facility Guidelines (AHFG), ABCB and Local Government regulations when considering the choice of, and the installation of these products.

Enware Australia advises:

1. Due to ongoing Research and Development, specifications may change without notice.
2. Component specifications may change on some export models.
3. Refer to warranty statement for warranty details - www.enware.com.au/warranty

Version 2.0__06Jul22