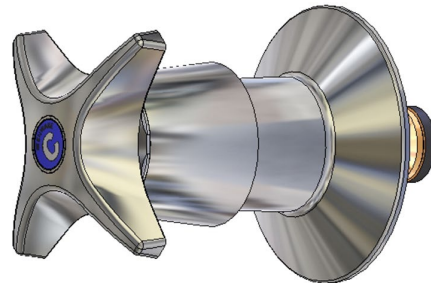


Concealed Spindle Recess Adaptor Wall Top Assembly - Jumper Valve

The ergonomically designed CS (Concealed Spindle) Series handle features a dress skirt that conceals the anti-vandal handle fixing and the spindle. An internal locking ring secures the handle to the spindle, which may only be released by using the key provided.

KEY FEATURES

- Vandal-resistant internal locking ring secures the handle which requires special key to release (key supplied)
- Blue (Cold), Red (Hot) or Yellow (Warm) coloured indicator button. (3 colour indicator buttons included)
- Heavy duty bright chrome
- High quality dezincification resistant (DR) brass construction



PRODUCT CODE

CS308

Concealed Spindle Recess Adaptor Wall Top Assembly - Jumper Valve



Products are to be installed in accordance with the Plumbing Code of Australia and AS/NZS3500. Reference should also be made to the Australasian Health Facility Guidelines (AHFG), ABCB and Local Government regulations when considering the choice of, and the installation of these products.

This product is compliant with the Lead Free requirements of NCC Volume Three.

Due to ongoing Research and Development, specifications may change without notice. Component specifications may change on some export models.

Refer to warranty statement for warranty details - www.enware.com.au/warranty.

TECHNICAL DATA

Recommended Pressure	50kPa – 500kPa
Maximum Static Pressure	1200kPa
Maximum Jumper Valve Working Temperature	95°C
Finish	Chrome
Valve Type	Jumper Valve

