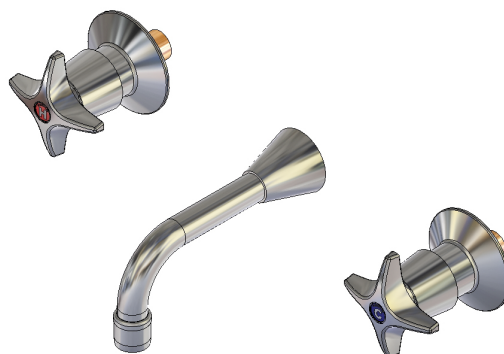


Concealed Spindle Wall Set with SP201 Fixed Aerated Spout - 1/2 Turn Ceramic Disc

The ergonomically designed CS (Concealed Spindle) Series handle features a dress skirt that conceals the anti-vandal handle fixing and the spindle. An internal locking ring secures the handle to the spindle, which may only be released by using the key provided.

KEY FEATURES

- Half-turn ceramic disc
- High quality dezincification resistant (DR) brass construction
- Vandal-resistant internal locking ring secures the handle which requires special key to release (key supplied)
- Serviceable with all wearing components replaceable, thus providing an even longer life
- Blue (Cold), Red (Hot) or Yellow (Warm) coloured indicator button. (3 colour indicator buttons included)
- Heavy duty bright chrome
- 3 Star WELS rating (8 L/min) aerator



PRODUCT CODE

CSQ314

Concealed Spindle Wall Set with SP201
Fixed Aerated Spout - 1/2 Turn Ceramic Disc



Products are to be installed in accordance with the Plumbing Code of Australia and AS/NZS3500. Reference should also be made to the Australasian Health Facility Guidelines (AHFG), ABCB and Local Government regulations when considering the choice of, and the installation of these products.

This product is compliant with the Lead Free requirements of NCC Volume Three.

Due to ongoing Research and Development, specifications may change without notice. Component specifications may change on some export models.

Refer to warranty statement for warranty details - www.enware.com.au/warranty.

TECHNICAL DATA

Inlet Connection	1/2" BSP (15mm)
Recommended Pressure	50kPa – 500kPa
Maximum Static Pressure	800kPa
Maximum Recommended Temperature	70°C
Maximum Ceramic Disc Working Temperature	85°C
Flow Rate	8 L/min
Finish	Chrome
Valve Type	1/2 Turn Ceramic Disc

