

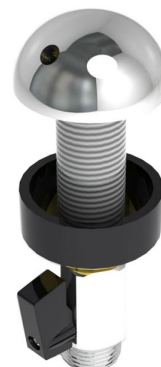
Detention Basin/Bubbler Outlet Domed - Low Flow

The water efficient Detention tapware series have been designed to provide a high level of security with the inclusion of vandal resistant features. The Detention range is constructed from dezincification resistant (DR) brass.

Incorporated is a smooth clean line chrome plated finish, which eliminates horizontal surfaces. The conical handle utilises a ceramic disc quarter turn valve whilst the push button unit activates a self-closing or time flow valve as specified. An anti-rotation pin is incorporated to inhibit tampering.

KEY FEATURES

- Integrated flow control valve allowing for in-situ adjustment to flow pattern
- Suits flow rates below 4 litres per minute
- Smooth clean line chrome plated finish, which eliminates horizontal surfaces
- Anti-ligature design when correctly installed



PRODUCT CODE

| | |
|--------|---|
| DET617 | Detention Basin/Bubbler Outlet Domed - Low Flow |
|--------|---|



Products are to be installed in accordance with the Plumbing Code of Australia and AS/NZS3500. Reference should also be made to the Australasian Health Facility Guidelines (AHFG), ABCB and Local Government regulations when considering the choice of, and the installation of these products.

This product is compliant with the Lead Free requirements of NCC Volume Three.

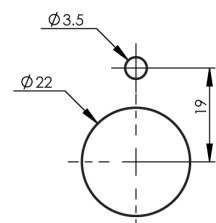
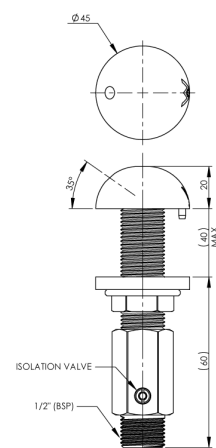
Due to ongoing Research and Development, specifications may change without notice. Component specifications may change on some export models.

Refer to warranty statement for warranty details - www.enware.com.au/warranty.

Detention Basin/Bubbler Outlet Domed - Low Flow

TECHNICAL DATA

| | |
|-----------------------------|-----------------|
| Inlet Connection | 1/2" BSP (15mm) |
| Maximum Working Temperature | 85°C |
| Finish | Chrome |



INSTALLATION DETAIL
(BENCH TOP CUTOUT)

PLEASE CHECK LOCKING PIN
POSITION BEFORE INSTALLATION
AS ORIENTATION MAY VARY