

Detention Push Button Basin Control and Outlet Assembly - Right Angle Body to Suit Spring Action

Push button basin control and outlet for Detention and Anti-Vandal installations

KEY FEATURES

- Suits Stainless Steel Fixtures
- Anti-ligature/ Anti Vandal design
- Anti rotation pins are incorporated to inhibit tampering
- Self Closing to prevent water wastage



PRODUCT CODE

DET687

Detention Push Button Basin Control and Outlet Assembly - Right Angle Body to Suit Spring Action



Products are to be installed in accordance with the Plumbing Code of Australia and AS/NZS3500. Reference should also be made to the Australasian Health Facility Guidelines (AHFG), ABCB and Local Government regulations when considering the choice of, and the installation of these products.

This product is compliant with the Lead Free requirements of NCC Volume Three.

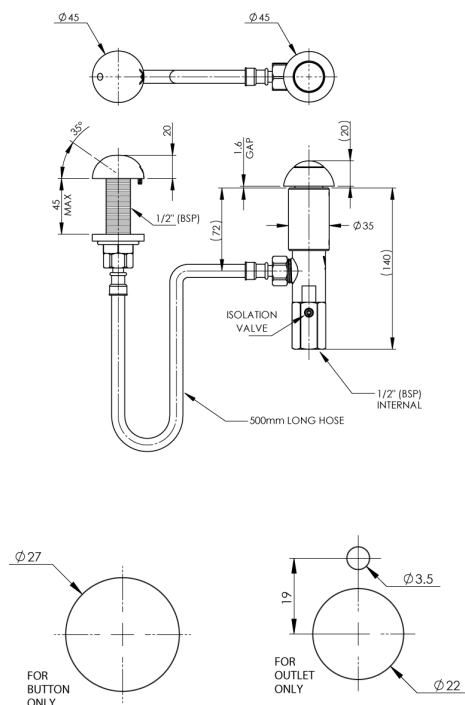
Due to ongoing Research and Development, specifications may change without notice. Component specifications may change on some export models.

Refer to warranty statement for warranty details - www.enware.com.au/warranty.

Detention Push Button Basin Control and Outlet Assembly - Right Angle Body to Suit Spring Action

TECHNICAL DATA

Inlet Connection	1/2" BSP (15mm)
Recommended Pressure	100kPa – 500kPa
Maximum Static Pressure	1200kPa
Maximum Working Temperature	70°C
Valve Type	Spring Action
Finish	Chrome



INSTALLATION DETAIL
(BENCH TOP CUTOUT)
PLEASE CHECK LOCKING PIN
POSITION BEFORE INSTALLATION
AS ORIENTATION MAY VARY