

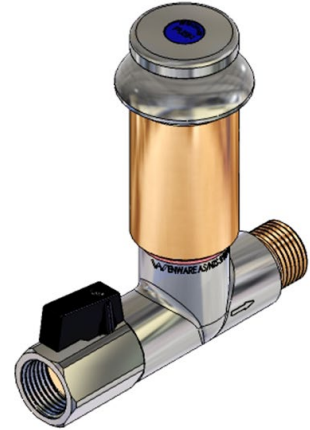
Detention Disabled Push Button Self Closing Basin Assembly - Straight Body - Spring Action

The water efficient Detention tapware series have been designed to provide a high level of security with the inclusion of vandal resistant features. The Detention range is constructed from dezincification resistant (DR) brass.

The conical push button unit activates a self-closing spring action. It incorporates an exposed push button design that allows easy operation for the disabled or for children.

KEY FEATURES

- Suits stainless steel fixtures
- Complete with regulator
- Spring action self-closing mechanism
- Watermark Licensed to AS/NZS 3718



PRODUCT CODE

DET701	Detention Disabled Push Button Self Closing Basin Assembly - Straight Body - Spring Action
--------	--



Products are to be installed in accordance with the Plumbing Code of Australia and AS/NZS3500. Reference should also be made to the Australasian Health Facility Guidelines (AHFG), ABCB and Local Government regulations when considering the choice of, and the installation of these products.

This product is compliant with the Lead Free requirements of NCC Volume Three.

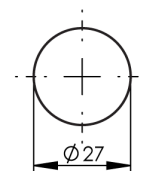
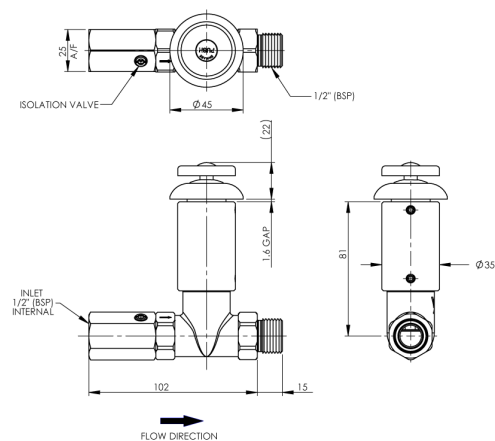
Due to ongoing Research and Development, specifications may change without notice. Component specifications may change on some export models.

Refer to warranty statement for warranty details - www.enware.com.au/warranty.

Detention Disabled Push Button Self Closing Basin Assembly - Straight Body - Spring Action

TECHNICAL DATA

Finish	Chrome
Valve Type	Spring Action
Maximum Spring Action Working Temperature	85°C
Recommended Pressure	100 - 500 kPa
Maximum Static Pressure	1200 kPa



INSTALLATION DETAIL
(BENCH TOP CUTOUT)

SPARE PARTS

BUB289	Spring Action Service Kit
BUB260L	Stuffing Box Assembly (cartridge)
DET790	Replacement Disabled Push Button to suit DET701 / DET703