

# Chrome Hand Held Shower and Smooth Hose - Right Hand Inverted T Stainless Steel Grab Rail

Water efficient handheld shower set with chrome shower head and holder, smooth hose and stainless steel grab rail. Suitable for commercial amenities, hospitals, hotels, sporting facilities and public areas.

## KEY FEATURES

- Chrome plated shower headSingle spray pattern
- Single-hand adjustable shower head holder
- Chrome plated wall elbow complete with spring loaded dual check valve
- 1.5m smooth hose in chrome finish
- Stainless steel heavy duty grab rail 1100 x 700mm (Satin finish)
- Concealed wall flange fixings
- CleanSeal flange and cover with a simple fixing method and a hygienically mounted installation
- Provides for easily cleaned crevice-free condition that inhibits bacterial build up
- Suitable for AS1428.1 applications \*Wall outlet must be installed 700mm from finished floor level



## PRODUCT CODE

ECRS029CTR

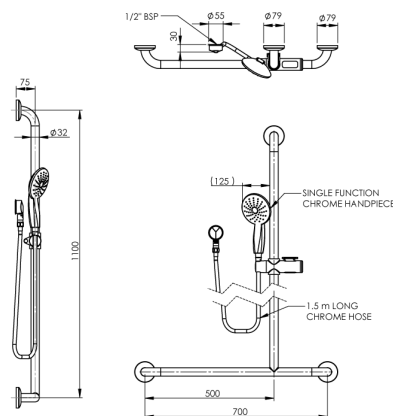
CLEANSEAL SS RH T GRABRAIL AND SHOWER



Due to ongoing Research and Development, specifications may change without notice.  
Component specifications may change on some export models.  
Refer to warranty statement for warranty details - [www.enware.com.au/warranty](http://www.enware.com.au/warranty).

## TECHNICAL DATA

WELS Category	Shower
Standard WELS	3Stars
Standard WELS Flow Rate	8.5L/min
Other Compliance	WHEELCHAIR ACCESSIBLE
Maximum Temperature	70°C
Minimum Working Pressure	150kPa
Maximum Working Pressure	500kPa
Flow Rate	8.5L/min
Inlet Connection	1/2" BSP



# Chrome Hand Held Shower and Smooth Hose - Right Hand Inverted T Stainless Steel Grab Rail

## SPARE PARTS

SP267	Spare Parts: Shower Wall Elbow - Dual Check
SP277C	Spare Parts: Hand Held Shower - Head Only - Chrome
SP282	Spare Parts: Shower Hose Replacement - 1.5m - Chrome
SP274-GROUP	Spare Parts: Hand Held Shower - Smooth Hose