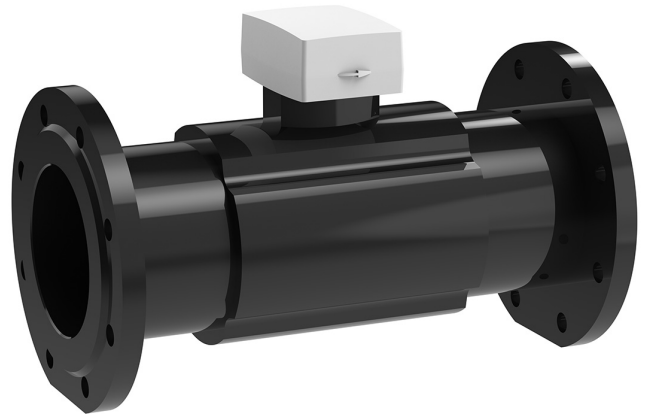


Hydrus 2.0 Cold DN150 L500mm Ultrasonic Water Meter Radio/Pulse

Hydrus 2.0 Cold Ultrasonic Water Meter DN150 Length 500mm Radio / L-Bus / Pulse

KEY FEATURES

- NMI approved and WaterMarked with dynamic range up to R800
- Ultrasonic design minimises sedimentation
- Horizontal and vertical installation
- No magnetic influence
- U0 / D0, no need for calming sections
- Integrated radio communication based on Open Metering telegram (OMS Generation 3 or 4, Profile B)
- IP68 permanent immersion (suitable for outdoor installation)
- Higher performance than class 2 requirements
- Long-term stability under difficult conditions
- No measurement of air
- No over-run performance
- Display with error and alarm codes including leakage detection
- Battery lifetime up to 16 years
- Available in Cold Water DN 20, 25, 32, 40, 50, 80, 100, 150, 200
- Available in Hot Water DN 15, 20, 25, 32, 40



PRODUCT CODE

EHM50150X5FL	Hydrus 2.0 Cold DN150 L500mm Ultrasonic Water Meter Radio/Pulse
--------------	---



Due to ongoing Research and Development, specifications may change without notice.
Component specifications may change on some export models.
Refer to warranty statement for warranty details - www.enware.com.au/warranty.

Hydrus 2.0 Cold DN150 L500mm Ultrasonic Water Meter Radio/Pulse

TECHNICAL DATA

Check Valve	None
Couplings	None included
Inlet Connection	Round Flange 150mm
Outlet Connection	Round Flange 150mm
Medium Temperature Range	Min 1°C Max 50°C
Ambient Operating Temperature	Min 1°C Max 70°C
Ambient Storage Temperature	Min -20°C Max 50°C
Nominal Pressure	1600 kPa
Power Supply	3.6VDC
Battery Lifetime	Up to 16 years
Interfaces	WM-BUS OMS Radio (R3, R4), Wired PULSE
Frequency Band	434MHz
Sending Interval	15s
Data storage	For events and for consumption values
Approval	NMI R49, AS3565.1, AS3565.3
Protection Class	IP 68
Accuracy Class	2
Display Indication	LCD, 9-digit, additional symbols / display counter / unit
Values Displayed	Current Total Volume, Current Flow Rate, Remaining Battery Life, Error and Alarms, Software Version, Display Test
Maximum Continuous Flow Rate Q3	250000 L/hr
Dynamic Range Horizontal	800 (Q1/Q3)
Dynamic Range Vertical	250 (Q1/Q3)
Flow Rate Q1	312.5 L/hr
Flow Rate Q2	500 L/hr
Flow Rate Q4	312500 L/hr

