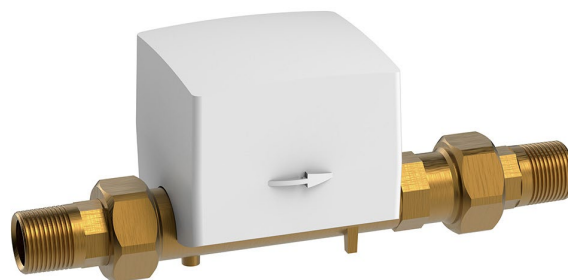


Hydrus 2.0 Cold DN20 L154mm Ultrasonic Water Meter Radio

Hydrus 2.0 Cold Ultrasonic Water Meter DN20 Radio

KEY FEATURES

- NMI approved and WaterMarked with dynamic range up to R800
- Ultrasonic design minimises sedimentation
- Horizontal and vertical installation
- No magnetic influence
- U0 / D0, no need for calming sections
- Integrated radio communication based on Open Metering telegram (OMS Generation 3 or 4, Profile B)
- IP68 permanent immersion (suitable for outdoor installation)
- Higher performance than class 2 requirements
- Long-term stability under difficult conditions
- No measurement of air
- No over-run performance
- Display with error and alarm codes including leakage detection
- Battery lifetime up to 16 years
- Available in Cold Water DN 20, 25, 32, 40, 50, 80, 100, 150, 200
- Available in Hot Water DN 15, 20, 25, 32, 40



PRODUCT CODE

EHM5020X1VR	Hydrus 2.0 Cold DN20 L154mm Ultrasonic Water Meter Radio
-------------	--



OPTIONAL ACCESSORIES

EHM115-H2	Meter Bracket Hydrus 2 20mm Sydney Water 1.28 Thread
-----------	--

Due to ongoing Research and Development, specifications may change without notice.
Component specifications may change on some export models.
Refer to warranty statement for warranty details - www.enware.com.au/warranty.

Version 23 July 2025

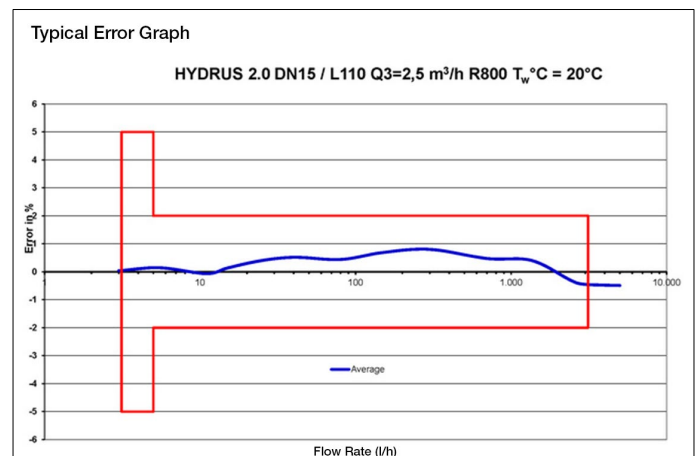
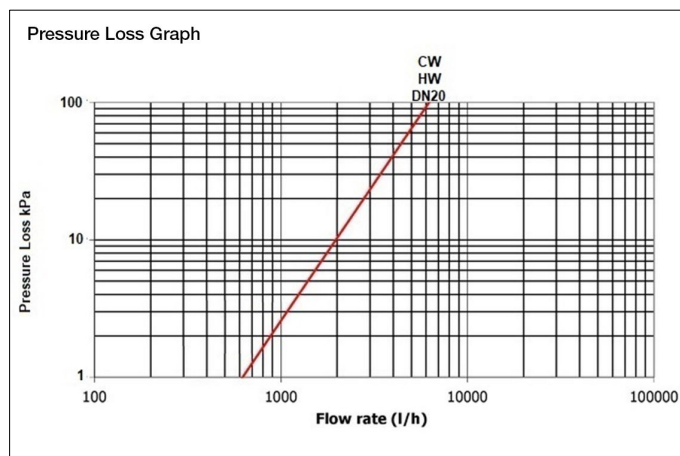
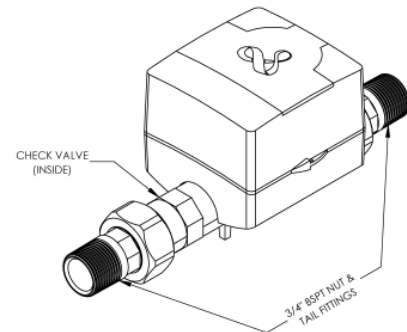
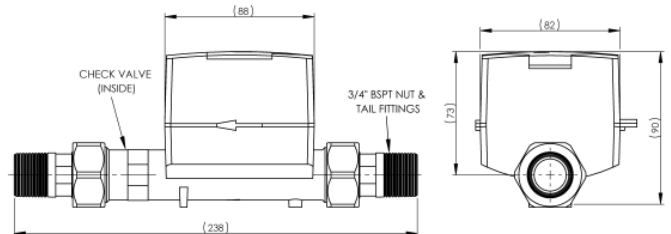
1300 369 273 | info@enware.com.au | enware.com.au

ENWARE
A WATTS Brand

Hydrus 2.0 Cold DN20 L154mm Ultrasonic Water Meter Radio

TECHNICAL DATA

Check Valve	Dual Check
Couplings	2 couplings included
Inlet Connection	20mm (3/4" BSP) Male
Outlet Connection	20mm (3/4" BSP) Male
Medium Temperature Range	Min 1°C Max 50°C
Ambient Operating Temperature	Min 1°C Max 70°C
Ambient Storage Temperature	Min -20°C Max 50°C
Nominal Pressure	1600 kPa
Power Supply	3.6VDC
Battery Lifetime	Up to 16 years
Interfaces	WM-BUS OMS Radio (R3, R4)
Frequency Band	434MHz
Sending Interval	15s
Approval	NMI R49, AS3565.1, AS3565.3
Protection Class	IP 68
Accuracy Class	2
Display Indication	LCD, 9-digit, additional symbols/display counter/unit
Values Displayed	Current Total Volume, Current Flow Rate, Remaining Battery Life, Error and Alarms, Software Version, Display Test
Maximum Continuous Flow Rate Q3	4000L/hr
Dynamic Range Horizontal	800 (Q1/Q3)
Dynamic Range Vertical	400 (Q1/Q3)
Flow Rate Q1	5L/hr
Flow Rate Q2	8L/hr
Flow Rate Q4	5000L/hr



Hydrus 2.0 Cold DN20 L154mm Ultrasonic Water Meter Radio

SPARE PARTS

EHM5020G	HYDRUS GASKET DN20 COLD 1.28
----------	------------------------------