

HYDRUS2 HOT DN15 RADIO

The HYDRUS2 Radio ultrasonic water meter provides accurate, maintenance free measurement with integrated wireless radio for easy deployment and reduced installation complexity while retaining advanced BMS integration via BACnet IP.

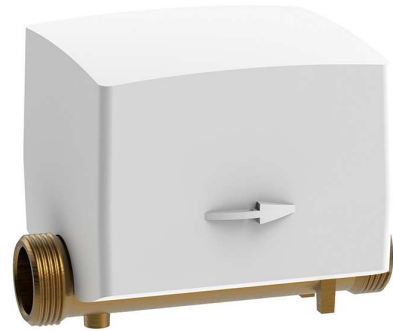
Its advanced ultrasonic technology provides long term stability, no moving parts, and reliable performance even in demanding conditions. The meter supports high resolution data, leak detection, backflow alerts, and robust diagnostics to enhance system visibility.

With IP68 protection it is suitable for both indoor and outdoor use, with its long battery life it will continue to function in a blackout, a wide dynamic range of up to R800 enables measurement of flow down to the level of drips, support for both horizontal and vertical installation and no need for calming sections. HYDRUS2 suits a broad range of commercial and industrial environments.

The HYDRUS2 Radio is suited to large facilities, campuses, and sites seeking cable free advanced BMS integration for facilities needing detailed, automated water reporting.

KEY FEATURES

- WaterMark certified on all sizes
- NMI approved on all sizes
- Higher performance than class 2 requirements
- Q1/Q3 (Dynamic range) up to R800
- Ultrasonic design minimises sedimentation
- Long-term stability under difficult conditions
- Horizontal and vertical installation
- IP68 permanent immersion (suitable for outdoor installation)
- U0 / D0, no need for calming sections
- No moving parts & no magnetic influence
- No measurement of air
- Integrated communications
- Battery lifetime up to 16 years
- Display with error and alarm codes including leakage detection
- Available in T50 (Cold Water) DN 20, 25, 32, 40, 50, 80, 100, 150, 200
- Available in T90 (Hot Water) DN 15, 20, 25, 32, 40



PRODUCT CODE

EHM9015X1VR

HYDRUS2 HOT DN15 RADIO



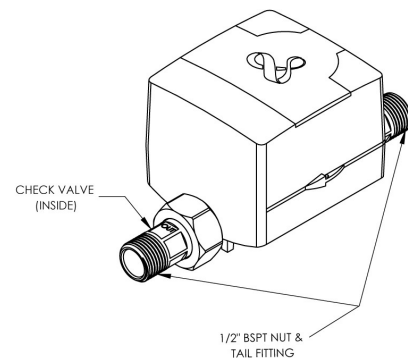
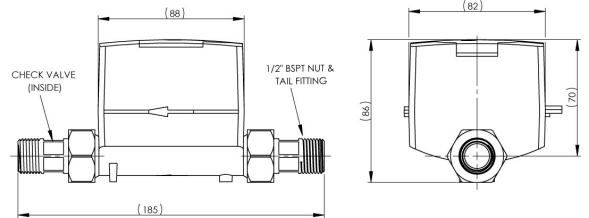
HYDRUS2 HOT DN15 RADIO

TECHNICAL DATA

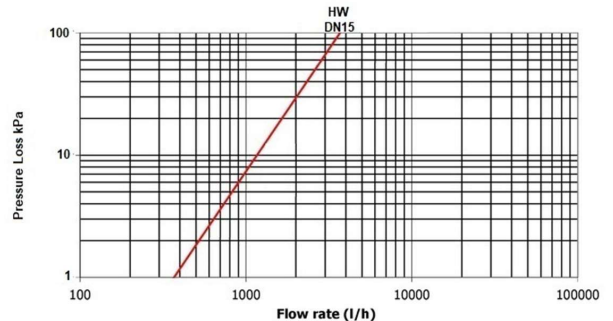
Check Valve	Single
Couplings	2 couplings included
Strainer	No
Display Indication	LCD, 9-digit, additional symbols/display counter/unit
Values Displayed	Current Total Volume, Current Flow Rate, Remaining Battery Life, Error and Alarms, Software Version, Display Test
Maximum Temperature Safety	90°C
Minimum Medium Temperature Range	1°C
Dynamic Range (Q1/Q3) Horizontal	800
Dynamic Range (Q1/Q3) Vertical	400
Minimum Flow Rate Q1	3.13L/hr
Transitional Flow Rate Q2	5L/hr
Permanent Flow Rate Q3	2500L/hr
Overload Flow Rate Q4	3125L/hr
Accuracy Class	2
Inlet Connection	R1/2 BSP Male
Outlet Connection	R1/2 BSP Male
Battery Lifetime	Up to 16 years
Protection Class	IP68
Nominal Diameter	15
Interfaces	WM-BUS OMS Radio (R3, R4)
Radio	Yes
Frequency Band	434MHz
Sending Interval	R3: 14s, R4: 15m
Wired Pulse	No
Wired M-BUS	No
Technical Notes	
WM40207 AS3565.1 Lead Free (WaterMark)	
NMI R49-1	

SPARE PARTS

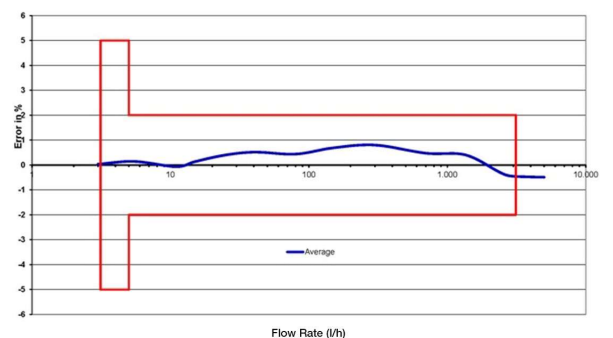
EHM9015I	Water Metering - Hydrus - Coupling Kit - DN15
EHM9015O	Hydrus Coupling Kit Dn15 Outlet W/Check
EHM9015G	Hydrus Gasket Dn15
EHM9015K	Hydrus Kit-Gasket Inlt/Outlt 2Xnut Dn15



Pressure Loss Graph



Typical Error Graph



Due to ongoing Research and Development, specifications may change without notice.
Component specifications may change on some export models.
Refer to warranty statement for warranty details - www.enware.com.au/warranty.