

Pull Down Eye Wash - Bench Mounted

The bench mounted eyewash is designed to comply with AS4775 and ANSI 358.1 (when installed to the correct specifications).

The eyewash is intended for use as a first aid response to help flush contamination from the eyes and prepare the user for proper medical treatment. It is designed to be an aesthetically pleasing option suitable for use within laboratory or school environments whilst being durable enough to be suitable for use in many other safety situations.

When positioned correctly, the eyewash can be activated by pulling it down directly over a sink to help capture the water. When not in use, the unit remains out of the way and will not interfere with the normal usage of the sink.



KEY FEATURES

- Aerated outlets
- Chrome plated brass body
- Ball valve style operation
- Isolation valve included
- Includes sign (320 x 250mm - Pull Down Eyewash)

PRODUCT CODE

EL486

Pull Down Eye Wash - Bench Mounted



Due to ongoing Research and Development, specifications may change without notice.

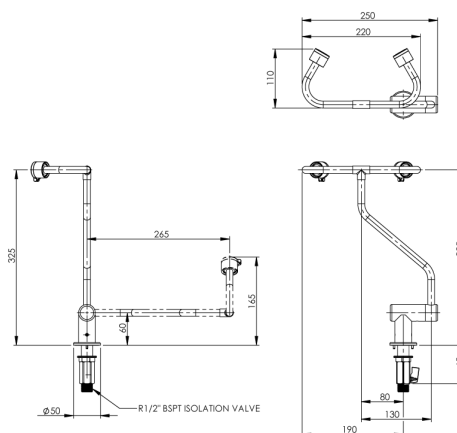
Component specifications may change on some export models.

Refer to warranty statement for warranty details - www.enware.com.au/warranty.

Installation of emergency showers, eye and eye/face wash equipment shall be in accordance with AS/NZS4775 or ANSI Standard Z358.1 - whichever is applicable to the installation.

TECHNICAL DATA

Maximum Recommended Pressure	500 kPa
Minimum Pressure to achieve ANSI Z358.1 and AS4775 compliance	210 kPa
Maximum Flow Rate	26 L/min
Inlet Connection	15mm (1/2" BSP)
Recommended Temperature Range	Tepid (15.6°C - 37.8°C)



Pull Down Eye Wash - Bench Mounted

SPARE PARTS

ESPE015	Spare Parts: ECE Eyewash Aerator and Washer
ESPE016	Spare Parts: ECE Eyewash Dustcover with Aerator - Pair
SP304	Spare Parts: Aerator - Anti-Vandal - Key to Suit - No.7
ESS521	Emergency Shower and Eye Wash Inspection Tag Replacement