

# Sensor and Touch-Activated Dual Flush WC Flushing System - Front Access

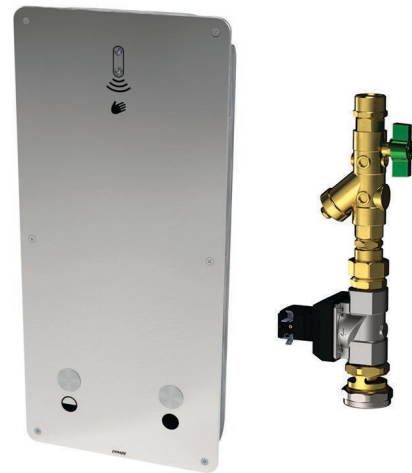
Enware's WC flushing systems provide a neat and reliable flushing solution using infra-red and piezoelectric technology particularly suited for public access applications.

Uses a WaterMarked solenoid that when combined with an appropriate pan delivers either a 3L or 6L flush. Large panel can be an access panel for the flush valve. Stylish and strong electronic piezo operation using mains power.

Semi concealed installation with a stainless steel panel and security screws. Shut off valve, filter and airbreak included.

## KEY FEATURES

- Touch-free flush activation with infra-red sensor, or touch activation via piezo button control
- Suitable for AS1428.1 applications
- Mains power 24V
- Large face panel allows access to valve components.
- Vandal resistant torx screws



## PRODUCT CODES

EMF511MIR-3	Front Access
EMF511MIR-RW-3	Front Access - Recycled Water



Due to ongoing Research and Development, specifications may change without notice.

Component specifications may change on some export models.

Refer to warranty statement for warranty details - [www.enware.com.au/warranty](http://www.enware.com.au/warranty).

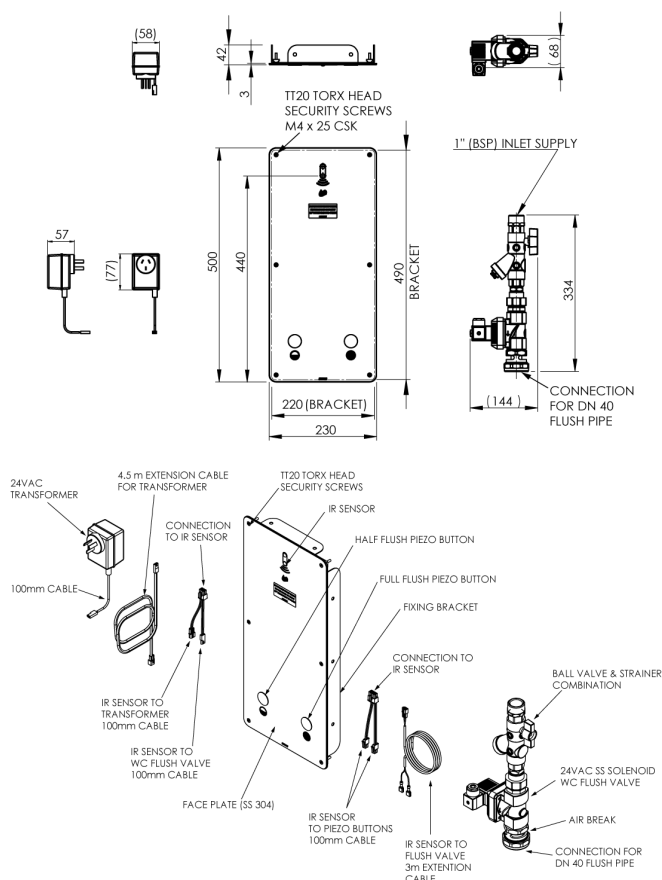
Products are to be installed in accordance with the Plumbing Code of Australia and AS/NZS3500.

Reference should also be made to the Australasian Health Facility Guidelines (AHFG), ABCB and Local Government regulations when considering the choice of, and the installation of these products.

# Sensor and Touch-Activated Dual Flush WC Flushing System - Front Access

## TECHNICAL DATA

WELS Category	Lavatory
Standard WELS	3 Stars
WELS Full Flush Volume	6.4L
WELS Half Flush Volume	3.4L
WELS Average Flush Volume	4L
Minimum Dynamic Pressure to achieve WELS Flush Volume	200kPa
Maximum Recommended Pressure	500kPa
Inlet Connection	1" BSP (25mm)
Outlet Connection	1-1/2" BSP (40mm) with connection for DN40 copper pipe
Minimum Water Supply Line Size	1" [25mm] copper pipe
Power	Mains Power Supply: 240VAC 50/60Hz Operating Voltage: 24V AC
Kv Factor	8.3 m3/h
Flush Pipe	Flush Pipe: 1½"(40mm) flush pipe is required below the air break. (Note: use a maximum of 1x90° bend in flush pipe. If an offset is required 2 x 45° bends must be used. Maximum of 1 offset per flush pipe. Air break must be installed in a vertical position at minimum 700mm +/- 100 mm above the pan inlet.
WC Pan	6/ 3 L Capacity (3 star)
Automatic Flush Sensor range	20 - 100mm
Automatic Flush Sensor Activation	Hover hand in sensor range to activate Full Flush
Touch Sensor Flush Activation	Press electronic piezo button to activate Full Flush or Half Flush
Technical Notes	WELS Flush Volume achieved at 300 kPa



## SPARE PARTS

EMDS803	Spare Parts: EMD Touch-Activated Control Kits - Transformer Piezo 24VA 1A 4.6m Lead
EMFS303	Spare Parts: Solenoid Valve 3/4"BSP F-F 24V AC
EMFS305	Spare Parts: Y-Strainer - Ball Valve 3/4"BSP F-F
EMFS306	Spare Parts: Olive Rubber Suit 40mm Flush Pipe EMF