

ENWARE WALL FACED FLOOR MOUNT TOILET SUITE

Installation Instructions

ERWF-405



Pan: wall faced with rimless Clean Flush pan design

Material: white vitreous china

Enware products are to be installed in accordance with the Plumbing Code of Australia (PCA), AS/NZS3500 and the manufacturer's instructions. Installations not complying with PCA, AS/NZS 3500 or the manufacturer's instructions may void the product and performance warranty provisions.

Enware Australia advises: 1. Due to ongoing Research and Development, specifications may change without notice. 2. Component specifications may change on some export models.

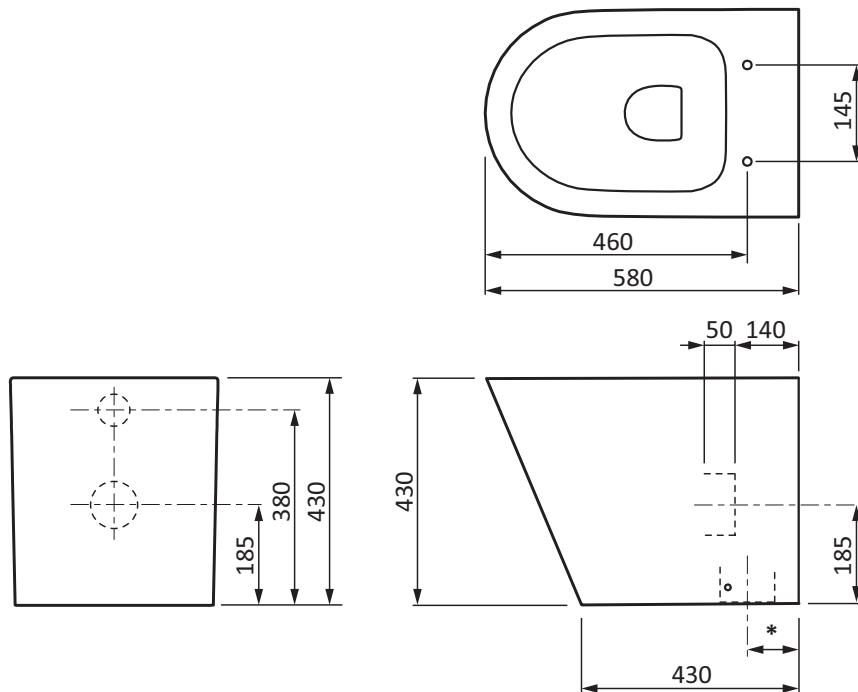
I00324_Oct 19

Call 1300 369 273
www.enware.com.au

Enware Pty Ltd
9 Endeavour Rd Caringbah NSW 2229 Australia
Ph: +61 2 8556 4000 info@enware.com.au



dimensions & set out



* S-Trap adaptor setout
min. 90mm, max. 120mm
from wall

All measurements are in millimetres.

Drawing not to scale.

Height dimensions are to base of pan. Make allowance for bedding.

Dimensions are nominal and subject to normal ceramic manufacturing variations.

installation

SETOUT

ERWF-405 WC pan is supplied with a universal trap which offers the option to use S or P trap connection.

S-Trap Set-Out:

The recommended set-out for S-Trap installation is 105mm from the finished wall to the centre of pipe, with adjustability range from minimum 90mm – maximum 120mm from finished wall.

The connection is DN100 PVC DWV pipe.

P-Trap Set-Out:

P-Trap spigot height is 185 +/-5 mm from base of pan to centre of spigot.

The connection is a 100mm DWV Pan Collar.

CONNECTION OF FLUSH PIPE

Connect flush pipe to inlet of pan, at height 380mm +/- 5mm from base of pan.

FIXING PAN ONTO FLOOR

Pan may be bedded with cement base, or using silicone sealant with bracket-and-screw fixing.

Fixing brackets, screws, and screw caps are supplied with the product.

Do NOT use epoxy type adhesives.

CLEANING

Clean with a damp cloth. Do not use abrasive cleaners, liquids or pastes.