

Hob Mounted Pre-Mix Single Base

Pre-Mix Single Base Hob Mounted



PRODUCT CODE

FS011

Hob Mounted Pre-Mix Single Base



Products are to be installed in accordance with the Plumbing Code of Australia and AS/NZS3500. Reference should also be made to the Australasian Health Facility Guidelines (AHFG), ABCB and Local Government regulations when considering the choice of, and the installation of these products.

This product is compliant with the Lead Free requirements of NCC Volume Three.

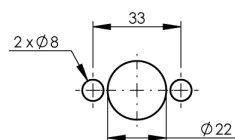
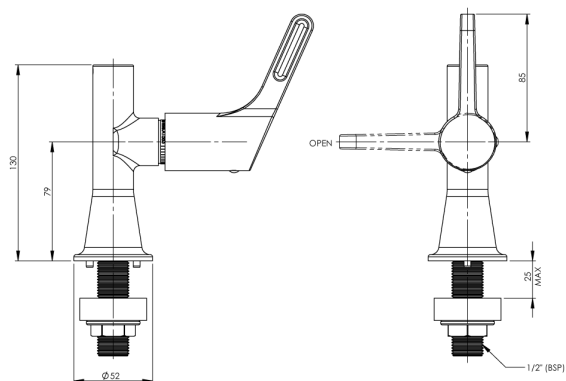
Due to ongoing Research and Development, specifications may change without notice. Component specifications may change on some export models.

Refer to warranty statement for warranty details - www.enware.com.au/warranty.

Hob Mounted Pre-Mix Single Base

TECHNICAL DATA

Valve Type	1/4 Turn Jumper Valve
Minimum Recommended Pressure	100kPa
Maximum Recommended Pressure	500kPa
Maximum Static Pressure	800kPa
Maximum Recommended Temperature	70°C
Inlet Connection	15mm (1/2" BSP)
Finish	Chrome



INSTALLATION DETAIL
(BENCHTOP CUT OUT)

PLEASE CHECK LOCKING PIN
POSITIONS BEFORE INSTALLATION
AS ORIENTATION MAY VARY

RISER / OUTLET OPTIONS

FS065W	Food Service: Pot Filler and Pre-Rinse Assembly - Short
FHS002	Food Service: Hob / Wall Mounted Riser Assembly with Spring Return

SPARE PARTS

FSJ381C	Pillar/Bib Stuffing Box Assembly - 1/4 Turn Jumper Valve - RTC
FSJ096RTC	Spare Parts: Food Service Lever Handle 80mm Top Assembly - Jumper Valve - 1/4 Turn Rising SBA RTC - Pillar/Bib - Colour Indicators
FSJ378-80	Spare Parts: Food Service - Lever Handle 80mm - Jumper Valve - Colour Indicators