

# Hob Mounted Dual Mixer Base

The Enware Ultra Rinse range of Food Service Pre-Rinse assemblies are designed for use in Commercial Kitchens and Food Preparation areas.

## KEY FEATURES

- Dual Mixer bench mounted hot and cold taps to provide either hot, cold water or mixed water
- Quarter-turn, contra-rotating easy to clean 80mm lever handles
- Heavy duty Jumper Valve 1/4 Turn spindles, can be serviced
- Clear identification on all lever handles with blue, yellow, red or grey coloured indicator collars
- Attractive, lead free brass chrome body
- Modular design allows tailoring for individual needs
- Base suitable to fit a spout or riser



## PRODUCT CODE

FS015

Hob Mounted Dual Mixer Base



Products are to be installed in accordance with the Plumbing Code of Australia and AS/NZS3500. Reference should also be made to the Australasian Health Facility Guidelines (AHFG), ABCB and Local Government regulations when considering the choice of, and the installation of these products.

This product is compliant with the Lead Free requirements of NCC Volume Three.

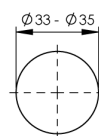
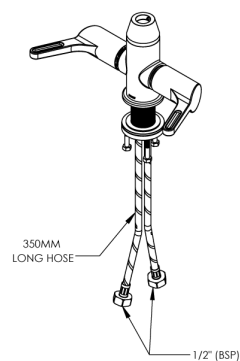
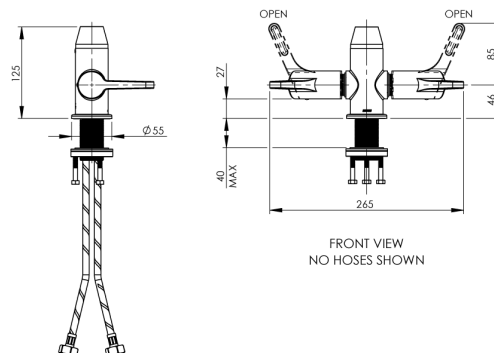
Due to ongoing Research and Development, specifications may change without notice. Component specifications may change on some export models.

Refer to warranty statement for warranty details - [www.enware.com.au/warranty](http://www.enware.com.au/warranty).

# Hob Mounted Dual Mixer Base

## TECHNICAL DATA

Valve Type	1/4 Turn Jumper Valve
Maximum Working Temperature	70°C
Minimum Recommended Pressure	50kPa
Maximum Recommended Pressure	500kPa
Maximum Static Pressure	800kPa
Inlet Connection	1/2" BSP (15mm) 450mm flexible hoses with 1/2" BSP connection
Finish	Chrome



INSTALLATION DETAIL  
(BENCHTOP CUT OUT)

# Hob Mounted Dual Mixer Base

## SPARE PARTS

JHS380LTC	Lever Action - Pillar/Bib Stuffing Box Assembly - 1/4 Turn Jumper Valve - LTC
JHS380RTC	Lever Action - Pillar/Bib Stuffing Box Assembly - 1/4 Turn Jumper Valve - RTC
FSJ095LTC	Food Service Lever Handle 80mm Top Assembly - Jumper Valve - 1/4 Turn SBA LTC - Pillar/Bib - Colour Indicators
FSJ096RTC	Food Service Lever Handle 80mm Top Assembly - Jumper Valve - 1/4 Turn Rising SBA RTC - Pillar/Bib - Colour Indicators
FSJ378-80	Food Service - Lever Handle 80mm - Jumper Valve with Colour Indicators
WLJS398	Wellbeing Leva Colour Indicator Kit JV
ATMS611	Aquablend - SQX M10 x 1/2" BSP Hose 350mm - 2 Hoses - 1x Hot 1x Cold
ATMS620	Fixing Kit Hob Mount