

# Food Service - Diverter Retrofit Kit

## Spare Parts: Food Service - Diverter Retrofit Kit

### KEY FEATURES

- Diverter with double O-ring spigot connections, suitable for spouts and Food Service tapware
- Constructed from dezincification resistant (DR) brass
- Durable bright chrome finish

\* All taps should be turned off after use and especially overnight to prevent over pressurisation of downstream fittings, connections and/or hoses.



### PRODUCT CODE

FS064

Food Service - Diverter Retrofit Kit



Products are to be installed in accordance with the Plumbing Code of Australia and AS/NZS3500. Reference should also be made to the Australasian Health Facility Guidelines (AHFG), ABCB and Local Government regulations when considering the choice of, and the installation of these products.

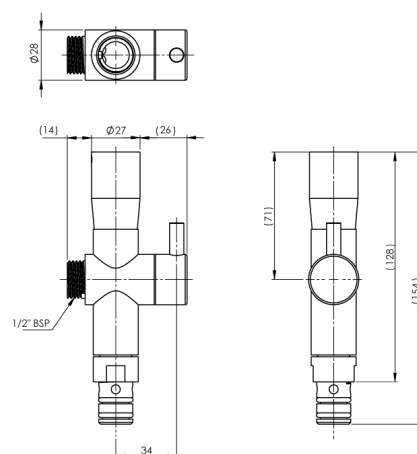
This product is compliant with the Lead Free requirements of NCC Volume Three.

Due to ongoing Research and Development, specifications may change without notice. Component specifications may change on some export models.

Refer to warranty statement for warranty details - [www.enware.com.au/warranty](http://www.enware.com.au/warranty).

### TECHNICAL DATA

Finish	Chrome
Valve Type	1/4 Turn Ceramic Disc
Maximum Working Temperature	85°C
Maximum Recommended Pressure	500kPa
Maximum Static Pressure	800kPa



# Food Service - Diverter Retrofit Kit

