

# Pre Rinse Wall Exposed Mixer Assembly with Pot Filler

The Enware Ultra Rinse range of Food Service Pre-Rinse assemblies are designed for use in Commercial Kitchens and Food Preparation areas.

A wide range of products to suit Wall and Bench mounting are available with mixers, pot fillers and various formats to suit different plumbing set-outs.

Heavy duty fixings and chrome plated finishes with anti-vandal fittings ensure easy cleaning for improved hygiene, and long lasting service for critical areas in the kitchen.

Adjustable sets for easy retro-fit and special shortened assemblies ensure there is a solution for all new and existing kitchens.

Service parts such as hoses, trigger sprays, spindles and handles are available to ensure downtime does not interrupt the work flow of a busy kitchen.



## PRODUCT CODE

FWS131

Pre Rinse Wall Exposed Mixer Assembly with Pot Filler

## KEY FEATURES

- Separate exposed hot and cold taps to provide either hot, cold water or mixed water
- Dual check valves for backflow protection
- Spring return allows the spray and hose to be pulled into the spraying position and to retract back from the washing area when released
- Pex hose with smooth outer covering and braided inner has in-built swivels to ensure ease of use and to assist to prevent user fatigue
- Quarter-turn, contra-rotating easy to clean 80mm lever handles
- Heavy duty Jumper Valve 1/4 Turn spindles, can be serviced
- Clear identification on all lever handles with blue, yellow, red or grey coloured indicator collars
- Includes Pot Filler
- Attractive, lead free brass chrome body
- Modular design allows tailoring for individual needs
- Also available with adjustable inlet centres- FWS131ADJ



Products are to be installed in accordance with the Plumbing Code of Australia and AS/NZS3500. Reference should also be made to the Australasian Health Facility Guidelines (AHFG), ABCB and Local Government regulations when considering the choice of, and the installation of these products.

This product is compliant with the Lead Free requirements of NCC Volume Three.

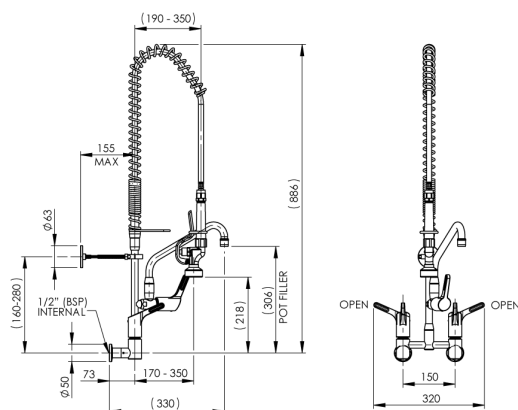
Due to ongoing Research and Development, specifications may change without notice. Component specifications may change on some export models.

Refer to warranty statement for warranty details - [www.enware.com.au/warranty](http://www.enware.com.au/warranty).

# Pre Rinse Wall Exposed Mixer Assembly with Pot Filler

## TECHNICAL DATA

Standard WELS	6 Stars
Trigger Spray Flow Rate	4 L/min
Pot Filler Flow Rate	5 L/min
Valve Type	1/4 Turn Jumper Valve
Maximum Working Temperature	70°C
Minimum Recommended Pressure	100 kPa
Maximum Recommended Pressure	500 kPa
Maximum Static Pressure	800 kPa
Inlet Connection	1/2" BSP (15mm)
Ensure spring return and hose movement is not impeded by surrounding equipment, benches and shelving.	
Applying excessive pulling force may damage the hose assembly.	



## OPTIONAL ACCESSORIES

FS729SS-KIT	Soft Spray conversion kit for FS729 trigger spray
-------------	---

## SPARE PARTS

JHS380LTC	Lever Action - Pillar/Bib Stuffing Box Assembly - 1/4 Turn Jumper Valve - LTC
JHS380RTC	Lever Action - Pillar/Bib Stuffing Box Assembly - 1/4 Turn Jumper Valve - RTC
FSJ095LTC	Food Service Lever Handle 80mm Top Assembly - Jumper Valve - 1/4 Turn SBA LTC - Pillar/Bib - Colour Indicators
FSJ096RTC	Food Service Lever Handle 80mm Top Assembly - Jumper Valve - 1/4 Turn Rising SBA RTC - Pillar/Bib - Colour Indicators
FSJ378-80	Lever Handle Only 80mm - Jumper Valve - Colour Indicators
WLJS398	Colour Indicator Kit JV
FS077NS	Service Kit Suits FS729
FS721S	Stuffing Box Assembly - FS721/FS729
FS790	Trigger Spray Handle & Screw Replacement
SP301	Aerator - M22x1 F/Male - No.1 - Standard
FS729	Pre-Rinse Ultra Rinse Trigger Spray
FS734	Washer Service Kit - O-Rings, Grub Screws, Aerator
FS053L	Riser Assembly 300mm Low Lead
FSHOSE100	Hose 15mm 1/2\"BSP FI X M15 - 1000mm Post March 24
FSHOSE100KIT	Hose Kit 15mm 1/2\"BSP FI x M15 1000mm with Spring Suits Pre April 24
FS062	Food Service: Riser Pot Filler with 230mm Spout
FS070	Spare Parts: Adjustable Wall Bracket - Standard
FS072	Spare Parts: Trigger Spray Hook