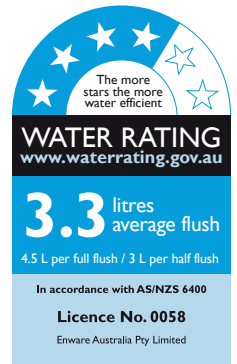


IFO SIGN JUNIOR TOILET

Installation and Maintenance Instructions

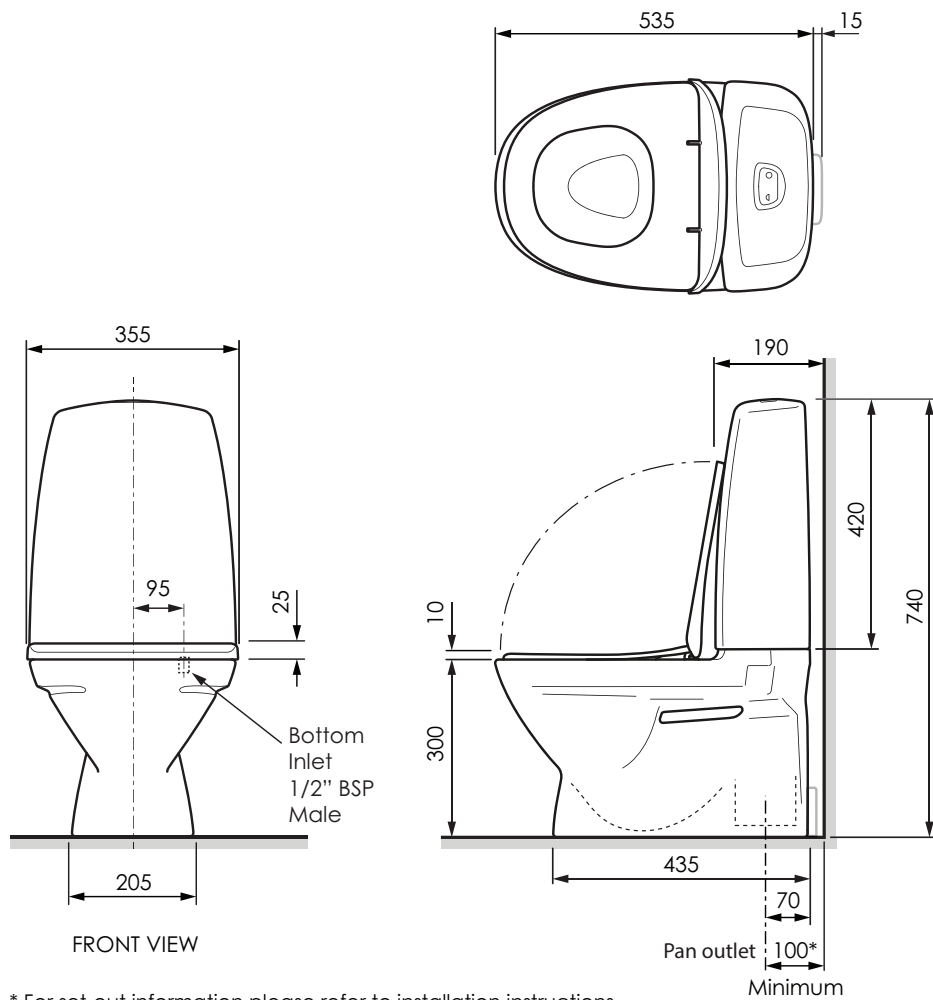


WaterMark
AS1172-1
WM-040187



I00126_Version_19March2024

dimensions



* For set-out information please refer to installation instructions

Dimensions are nominal and subject to normal ceramic manufacturing variations due to the nature of the manufacture of vitreous china.

technical data

Water Supply Inlet Pressure	Min. 50 kPa - Max. 500 kPa
Inlet Connection	1/2" BSP
Water Inlet Connection Method	Bottom Inlet
Outlet Connection	DN100 DWW PVC Pan Collar
Flush Volume	4.5 Full Flush / 3.0L Half Flush (WELS 4 Star)

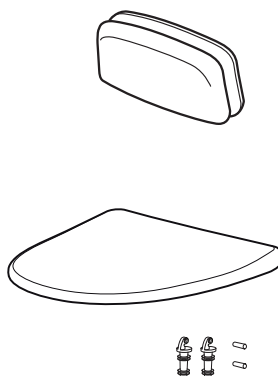
Installation shall be in accordance with the AS/NZS3500 series of Standards, the Plumbing Code of Australia (PCA), and the manufacturer's instructions.

Installations not complying with AS/NZS 3500, the PCA or the manufacturer's instructions may void the product and performance warranty provisions.

Enware Australia advises: 1. Due to ongoing Research and Development, specifications may change without notice; 2. Component specifications may change on some export models.

All measurements are in millimetres.

contents



Rear Cover

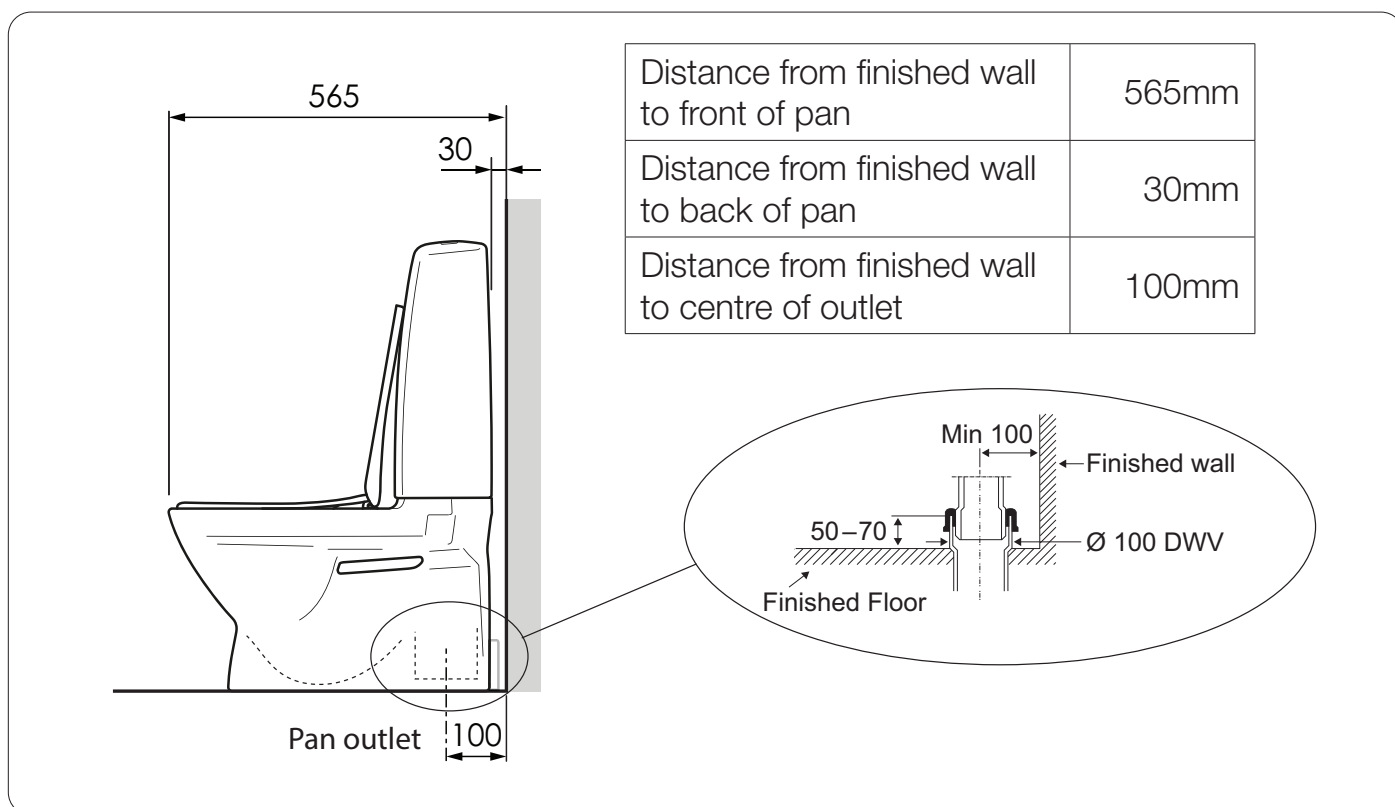
Toilet Seat

installation

Determine location and set out for the toilet pan.

Minimum Set Out

The minimum set out to allow air circulation behind the WC pan

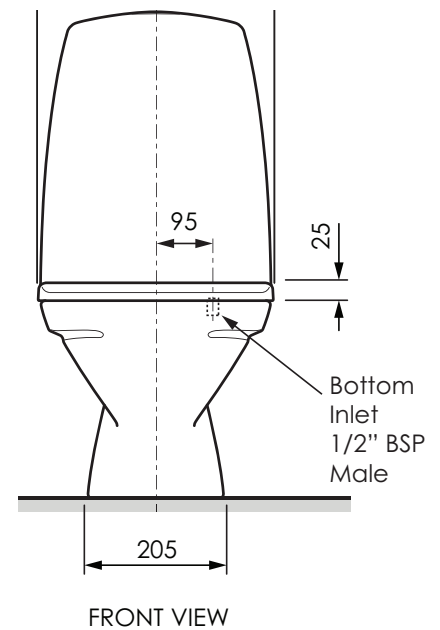


Water Inlet Point

The water connection to the cistern inlet is a 1/2" BSP male, bottom inlet.

Looking from the front of the pan, it is located on the right hand side, on the bottom of cistern.

Install a cistern tap in the vicinity.



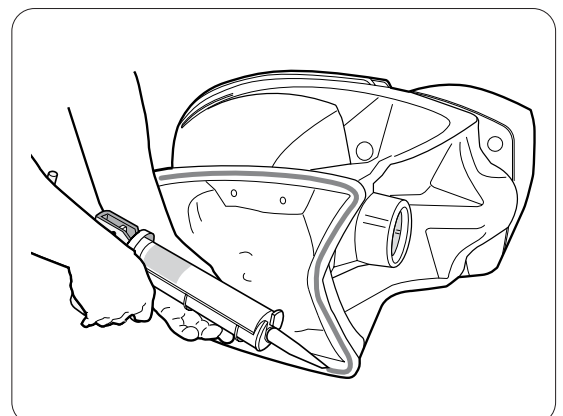
Installing the WC Pan

WC pan should be bedded with silicone sealant.

This method of fixing is only suitable for tiled or similar hard floor surfaces. It is not suitable for vinyl floors.

Ensure the floor surface and bottom surface of pan are clean and dry - free of dust, moisture and grease. Apply silicone sealant to the entire bottom contact surface of pan and around the perimeter, to achieve good adhesion and to create a strong bonding between the pan and the floor.

Install pan into position.

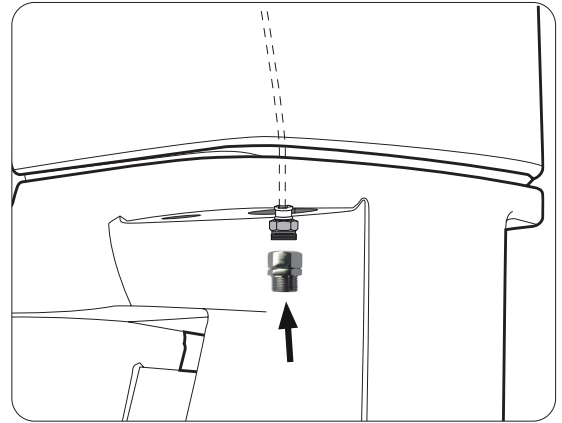


Water Inlet Connection

Flush the water supply line to ensure the line is clear, and connect water supply to the inlet connection of the cistern.

The inlet connection requires sealing with a washer. For hard pipe connection with compression nuts or thread sealing, use a loose nut extension fitting - IFOS-009 (Optional).

The inlet connection is flexible. Hold the inlet thread on the hex with a spanner when making the thread connection.



Install Rear Cover

After pan is levelled, water supply and waste are connected, and the pan is tested and visually inspected for any leaks, install the rear cover to plug the inspection hole.

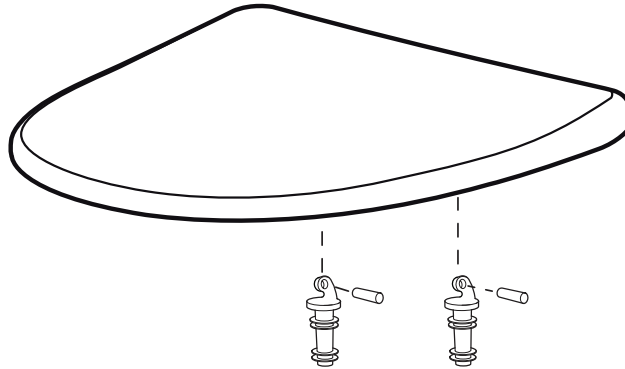
Apply silicone sealant around the rear cover to create a thorough seal between the rear cover, pan and floor. Ensure no gap is left that can let any moisture to get through inside the base of the pan.



Do not use the toilet until the silicone bed has cured.
Let the silicone sealant dry for at least 24 hours before use.

Install Toilet Seat

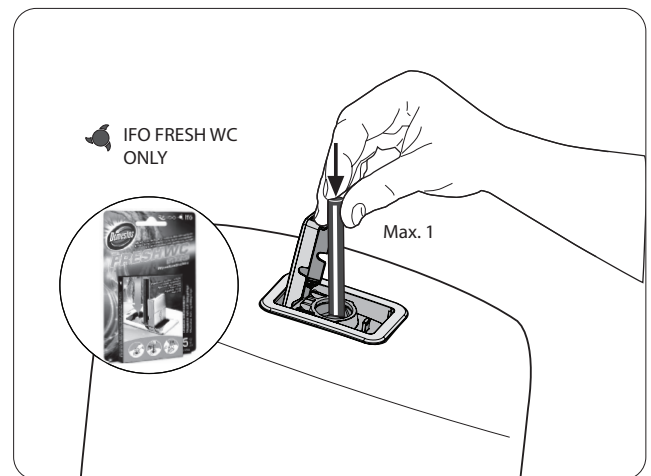
Attach pins to hinge. Clip hinge onto toilet seat. Feed hinges down to the holes on the pan, and push down firmly until the fittings come to a stop.



fresh odour cleaning tablets

This WC is prepared for Fresh WC function, with a hygienic dosing of a tablet through the flush button. The tablet is placed inside the Cover Screw Rod by opening the flush button and releasing the tablet in the blue Cover Screw Rod, as illustrated.

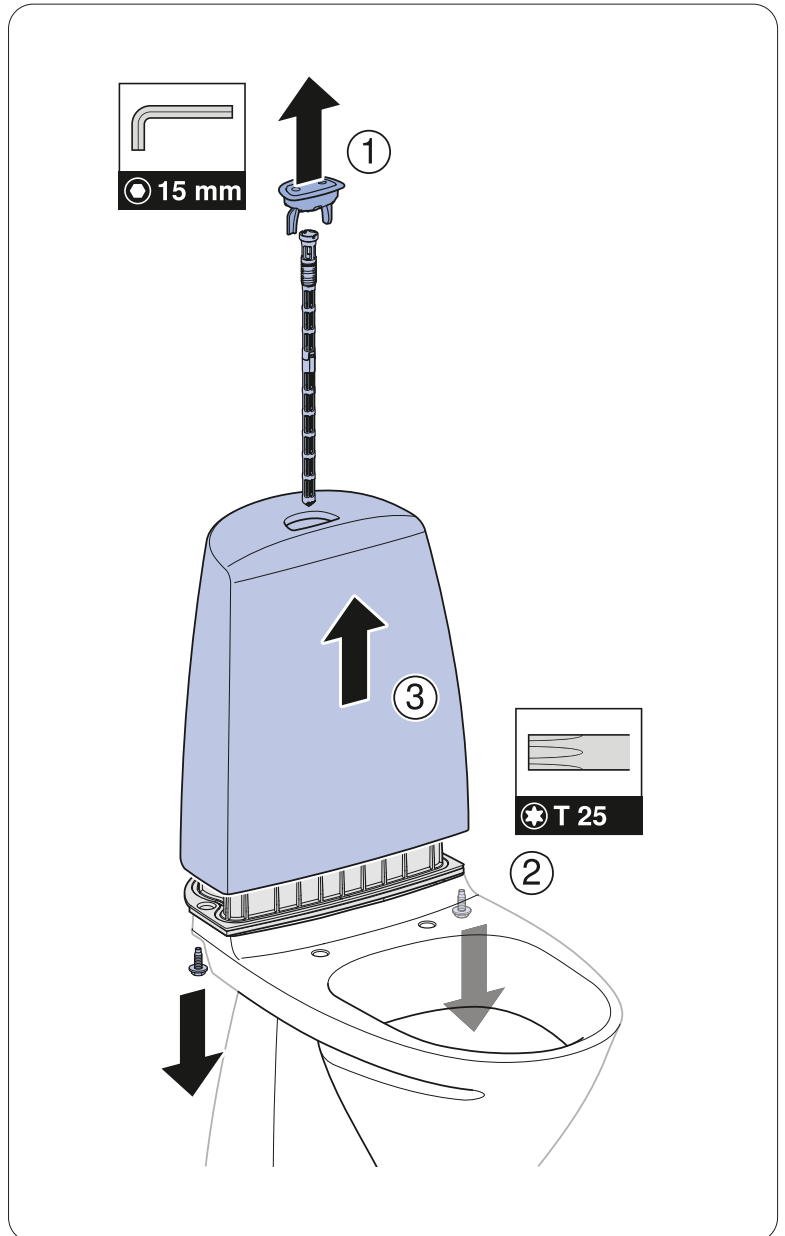
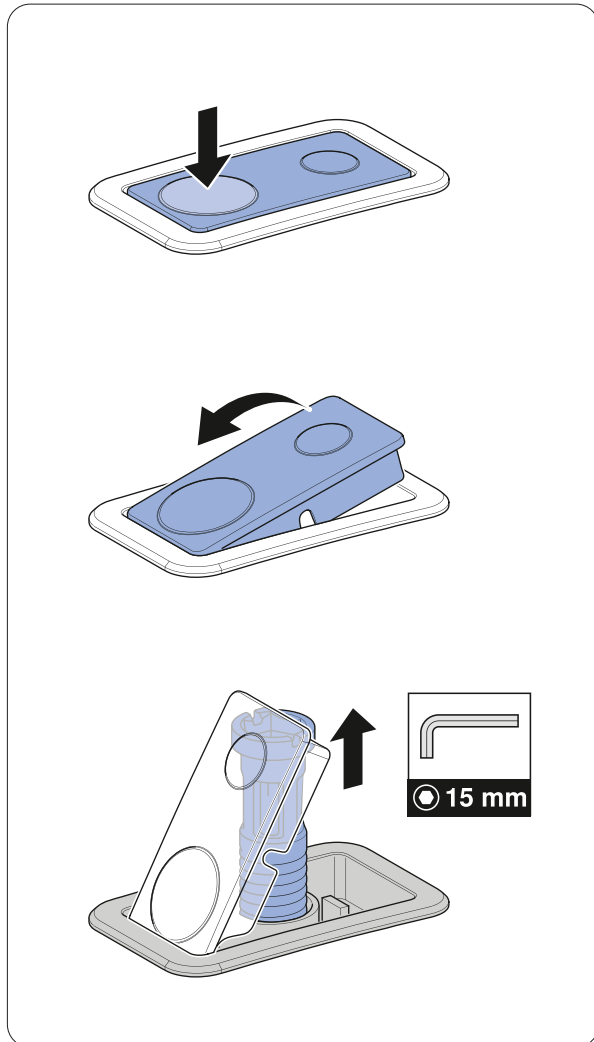
The tablet produces a fresh odour and cleaning effect on the whole bowl and colour.



access to cistern internal components

To access the internal components of the cistern, first lift the flush button, then unscrew Cover Screw Rod.

Next, unscrew the cistern fixing screws, and lift the ceramic shroud off the pan.



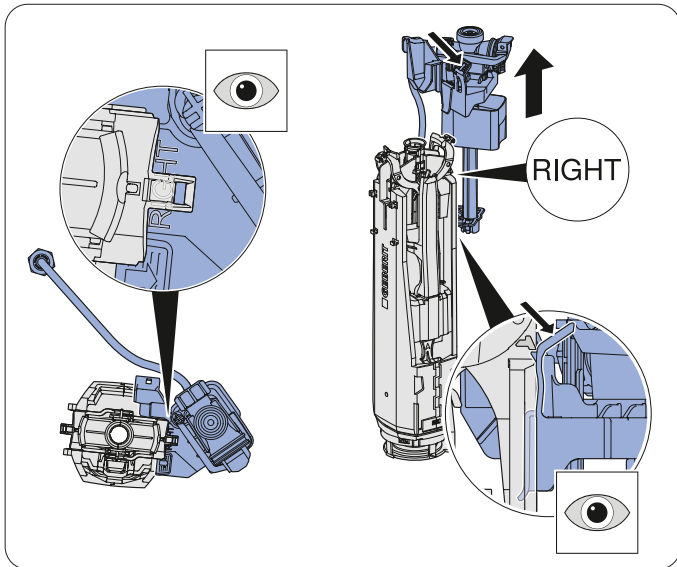
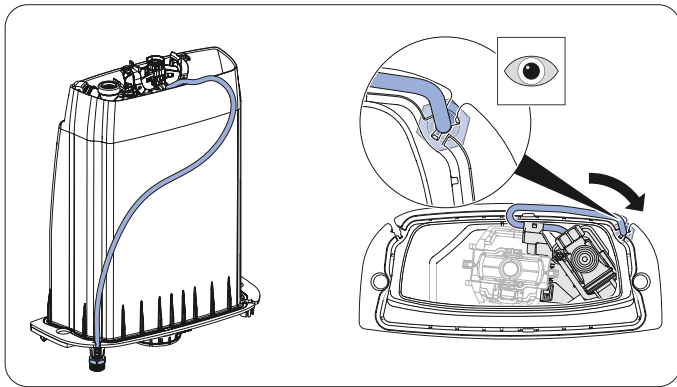
maintenance

Inlet Valve

Turn off and disconnect water supply.

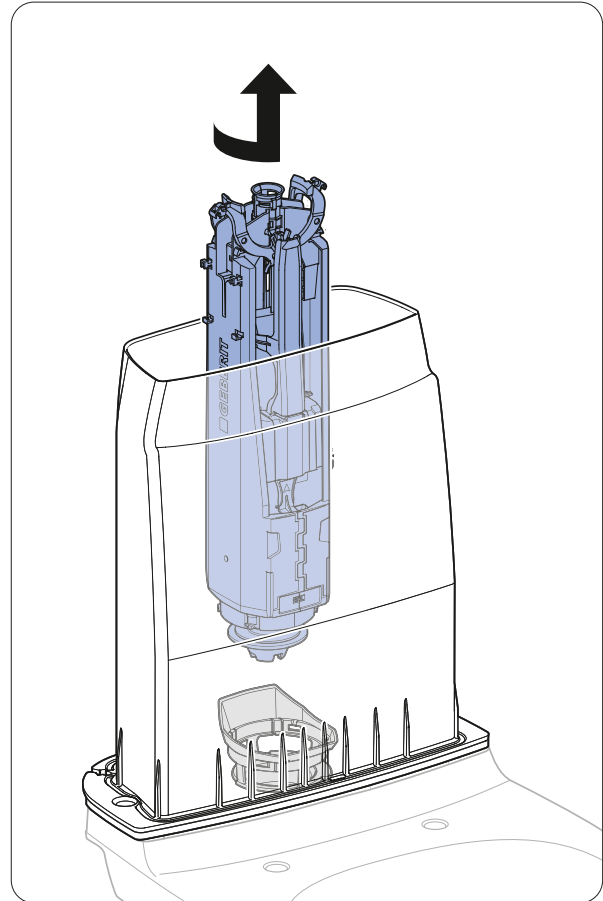
To access the inlet valve, first lift the complete cistern up off the pan.

Release the inlet hose from the bottom of cistern by pulling down and out. Release the catch of the inlet valve on the side of outlet valve, and lift up the inlet valve assembly as shown.



Outlet Valve

To access the outlet valve, twist and lift up the valve assembly.



Flush Volume

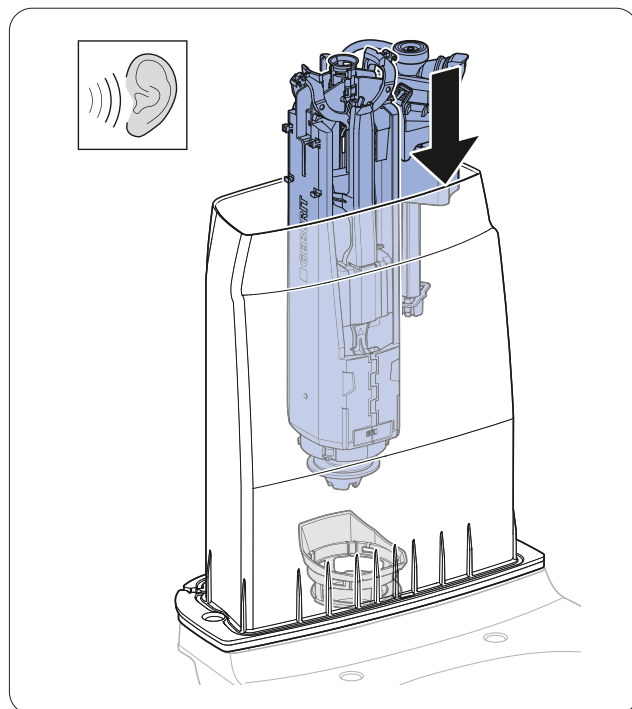
The flush volume is fixed at 4.5L for full flush and 3.0.L for half flush. Flush volume is not adjustable on this product.

Installing Inlet & Outlet Valve

Attach inlet valve onto outlet valve on the side marked "RIGHT".

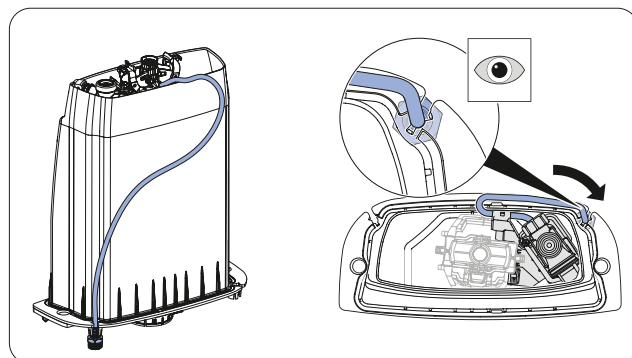
Take note of the direction of the valve to be installed. (Inlet valve is on the right hand side.)

Fit outlet valve into the centre of cistern and push down until it clicks into place.



Hook the inlet tube onto the guide on inlet valve holder.

Feed the inlet tube across the back of cistern to the bottom right hand corner, then fit the inlet fitting into the housing on the bottom of cistern.

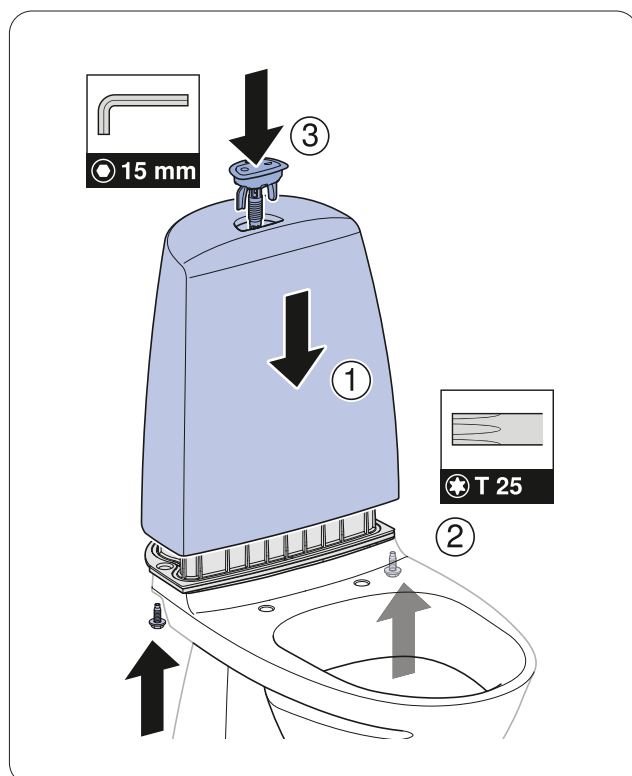


Reinstalling Cistern Cover:

To reinstall the cistern cover, follow steps on page 7 in reverse order.

The screws for the cistern mounting must be tightened alternately to a maximum torque of 2.5 Nm.

The cover screw should be tightened to a maximum torque of 1 Nm.



cleaning

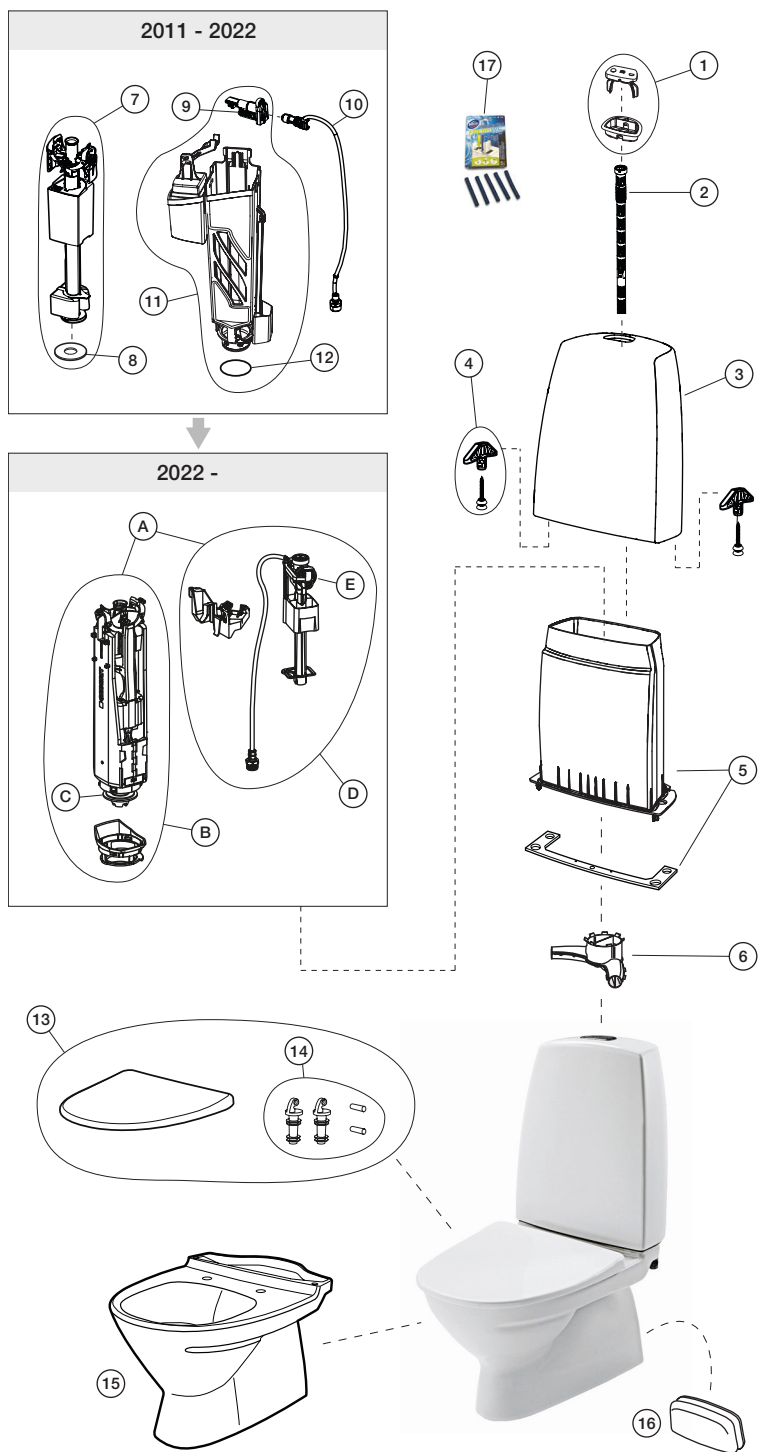
- WC units have a glazed surface. Glazed surfaces are easy to keep clean and are resistant against most chemicals.
- Clean bowl regularly.
- Clean external surfaces regularly with a dry, soft cloth. Alternatively clean with hot water and soap, using soft cloth or a sponge, and wipe dry with a cloth.
- Avoid using cleaning agents on the flush button, instead, use hot water and soap and wipe dry with a cloth. This is because cleaning agents for porcelain are not intended for chrome parts/plastics and can risk cracking the flush button if used frequently.
- Cleaning utensils, which contain abrasive agents, such as steelwool and green scouring pads, must not be used. Strong abrasive materials can scratch the glaze and devoid it of its original qualities.
- Strong acids such as hydrochloric acid or sulphuric acid, strong alkaline such as caustic soda, and cleaning powders or pastes must not be used.
- Running WC units should be repaired immediately.

troubleshooting

PROBLEM	CAUSE	RECTIFICATION
Toilet not flushing away Drain blockages	Offset pan collars are used	Do not use offset pan collars that can impede outlet flow.
Water constantly runs into bowl	Inlet valve failure	Replace inlet valve assembly or inlet valve seal.
	Outlet valve seal washer is worn or damaged	Replace outlet seal washer.
Water leaks between cistern and pan	Spreader is dislodged from cistern or is missing	Take ceramic cistern cover off, fit spreader back onto cistern, re-install cistern onto pan.
Water leaks at water inlet connection to cistern	Inlet connection is not sealed properly	Use loose nut extension fitting supplied (IFOS-009) on the inlet connection.

For further assistance, call Enware on 1300 369 273.

spare parts



	Description	Sales Code
A	Inlet and outlet valve kit	IFOS-105
B	Outlet valve assembly	IFOS-104
C	Outlet valve seal - 816.418.00.1	IFO245V
D	Inlet valve assembly	IFOS-103
E	Inlet valve arm and seal - 243.801.00.1	IFO333V
1	Sign Dual Flush Button - Chrome	IFO98303
	Sign Raised Dual Flush Button - Chrome	IFO98308
2	Cover Screw Rod	IFO96763
3	Cistern Cover White - Ceramic Shroud Only	IFO90613
4	Cistern Mounting Clip and Screw Kit (pair)	IFO98949
5	Inner Cistern - Tank only with seal	IFO98960
6	Flush Water Distributor / Spreader	IFO91967
7	Outlet Valve Assembly - IFO96769 replaced by IFO5-105	IFOS-105
8	Outlet Valve Seal (Cistern Seating Washer)	IFO96765
9	Inlet Valve Assembly (Inlet valve body with locking clip, shuttle piston and rubber seal) - IFO96766 replaced by IFO5-105	IFOS-105
10	Inlet Pipe Assembly (Inlet tube with spigot fitting) - IFO96761 replaced by IFO5-105	IFOS-105
11	Valve Frame Assembly - IFO96781 replaced by IFO5-105	IFOS-105
12	O-ring seal for Valve Frame Assembly / Cistern	IFO96764
13	Sign Junior toilet seat (incl. hinge fixing kit)	IFO99418
14	Hinge Fixing Kit for Sign Junior toilet seat	IFO91041
15	Sign Junior Toilet Bowl S Trap, white	IFO90423
16	Ifo S-Trap Pan Back Inspection Opening Cover Plug -Soft	IFO733
17	Fresh Sticks Blue (Pack of 5)	IFO94690
18	Ifo Cistern Key with Hex and T25 Torx	IFO91960
19	Loose Nut Extension 1/2" BSP for inlet connection	IFOS-009



Enware Australia (“we” or “us”) warrants that this product (also referred to as “our goods”) will be free from all defects in materials and workmanship for 12 months* from the date of purchase. Our liability under this warranty is limited at our option to the repair or replacement of the defective product or part, the cost of repair of the defective product or part or the supply of an equivalent product or part, in each case if we are satisfied the loss or damage was due to a defect in the materials or workmanship of the product or part. All products must be installed in accordance with the manufacturer’s instructions, the Plumbing Code of Australia (PCA), and AS/NZS3500 including any other applicable regulatory requirements.

making a claim

To make a claim under this warranty you must notify us in writing within 7 days of any alleged defect in the product coming to your attention, provide us with proof of your purchase of the product and have completed the Online Product Service and Warranty Form available on website:

www.enware.com.au/warranty-service-form

All notifications and accompanying forms must be sent to us marked for the attention of the Enware Australia, 9 Endeavour Road, Caringbah NSW 2229. We can also be contacted by telephone (1300 369 273) or by email (info@enware.com.au).

Your costs in making a claim under this warranty, including all freight, collection and delivery costs, are to be borne and paid by you. We also reserve the right at our cost to inspect any alleged defect in the product wherever it is located or installed or on our premises.

* Ifo Toilet - Ceramics: 10 Years warranted against material and manufacturing defects (parts only) | Flush Valves, WC seats, Fittings and Accessories - 2 Years warranted against material and manufacturing defects (parts only) | Pressalit Toilet Seats (Non Care) - 10 years warranted against material and manufacturing defects (parts only) | Accessories & Spare Parts - 2 Years warranted against material and manufacturing defects (parts only)

For more on warranty, see www.enware.com.au/warranty

exceptions

This warranty does not apply in respect of any damage or loss due to or arising from:

- a) Failure by you or any other person to follow any instructions for use (including instructions and directions relating to the handling, storage, installation, fitting, connection, adjustment or repair of the product) published or provided by us;
- b) Failure by you or any other person responsible for the fitting, installation or other work on the product to follow or conform to applicable laws, standards and codes (including the AS/NZ 3500 set of Standards, all applicable State and Territory Plumbing Codes, the Plumbing Code of Australia and directions and requirements of local and other statutory authorities); or
- c) Any act or circumstance beyond our control including faulty installation or connection, accident, abnormal use, acts of God, damage to buildings, other structures or infrastructure and loss or damage during product transit or transportation.

other conditions

Except as provided or referred to in this document, we accept no other or further liability for any damages or loss (including indirect, consequential or economic loss) and whether arising in contract, tort or otherwise. Any benefits available to you under this warranty are in addition to any non-excludable rights or remedies you may have under applicable legislation, including as a “consumer” under the Australian Consumer Law. To that extent you need to be aware that: our goods come with guarantees that cannot be excluded under the Australian Consumer Law. You are entitled to a replacement or refund for a major failure and for compensation for any other reasonably foreseeable loss or damage. You are also entitled to have the goods repaired or replaced if the goods fail to be of acceptable quality and the failure does not amount to a major failure.

ADDRESS: 9 Endeavour Rd Caringbah NSW 2229 Australia

POSTAL ADDRESS: P.O. Box 2545, Taren Point NSW 2229 Australia

1300 369 273 [AUS] WWW.ENWARE.COM.AU INFO@ENWARE.COM.AU

