

Ifo - Sign Basin 900 Right Bowl

Vanity top wash basin 920mm with left or right hand basin providing large vanity surfaces at the back and to the left or right side of the wash basin.

IF07472

FEATURES

- 920mm long vitreous china basin with side wing
- Fully glazed under and over preventing bacteria growth
- Reverse shape wash bowl increases user area
- Back to wall lip for protection
- All basin mounting contact surfaces to be sealed with high grade anti bacterial silicone of appropriate colour
- Easy clean recessed tap and soap area
- Short 40mm P Trap supplied
- Applicable for AS1428.1 2009 (sole occupancy only)
- Can be cabinet mounted or wall mounted with brackets or PS Frame

OPTIONS

Microtrap Chrome

PS 9, 900 Frame

Free hanging bracket set

Free hanging bracket - left

Free hanging bracket - right

300mm cabinet

600mm cabinet

900mm cabinet

Shroud

Can be drilled with 3 tapholes*

IFO15917

IFO99112-AU

IFO96487

IFO96487L

IFO96487R

EVC300

EVC600

EVC900

IFO4346F-900



Picture here with EVC600 and EVC300 cabinet



Pictured here with IFO96487 (bracket) and EVC300 (cabinet) which are available separately

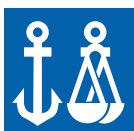


Picture here with EVC900 cabinet

Product Code

IFO7472	Left Bowl 1 x Taphole 1 x Overflow
IFO7470-100	Left Bowl No Taphole No Overflow*
IFO7472-100	Left Bowl 1 x Taphole No Overflow*

* Special Production - Terms Apply



Version: Nov 15

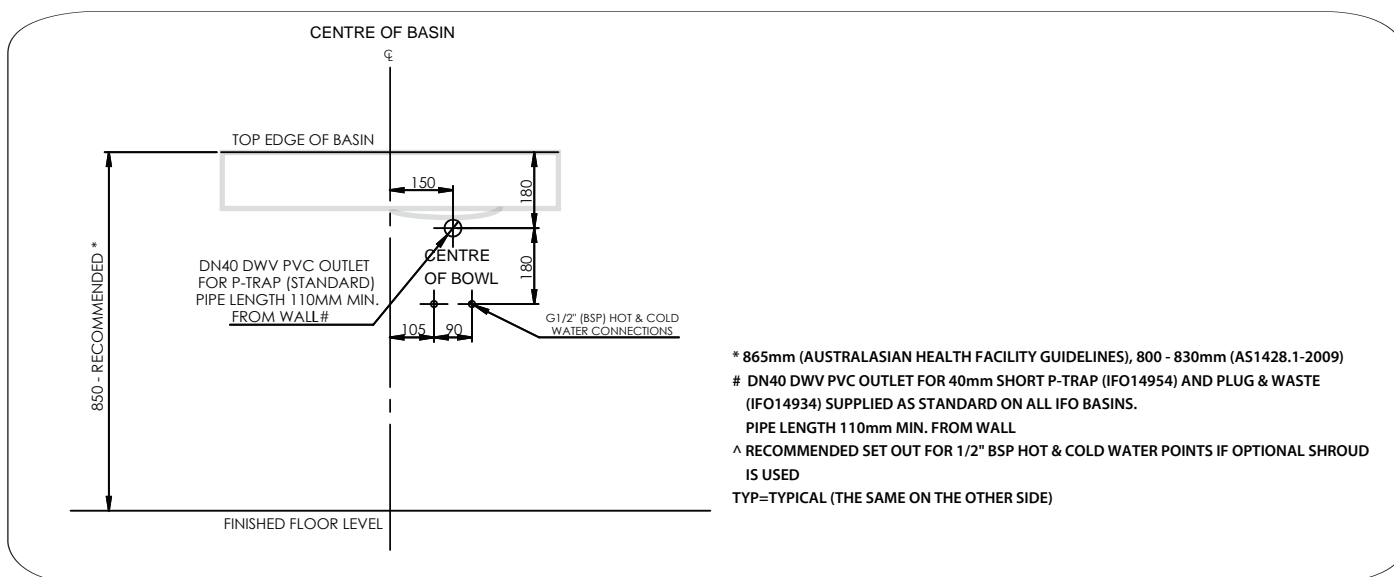
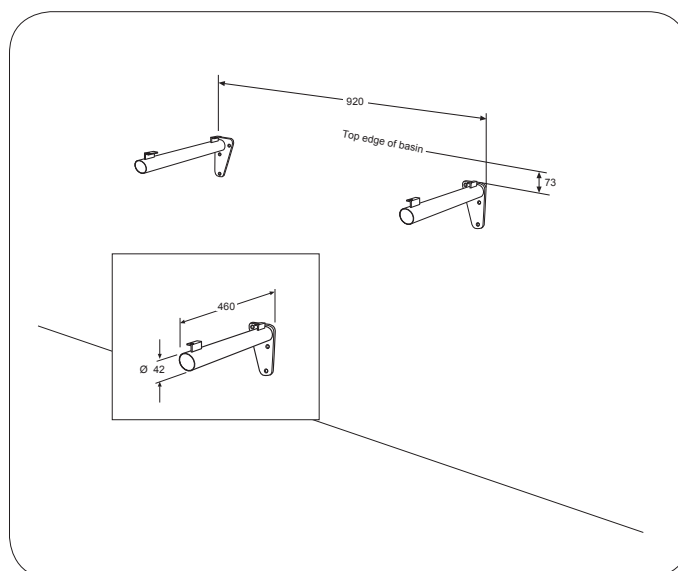
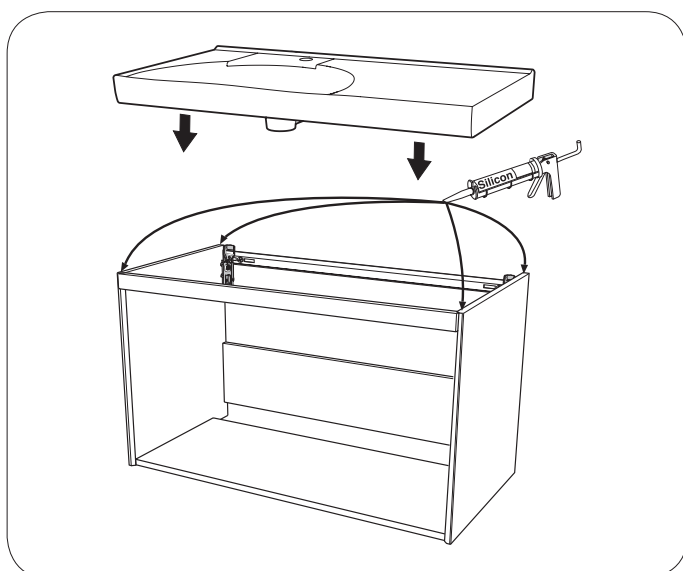
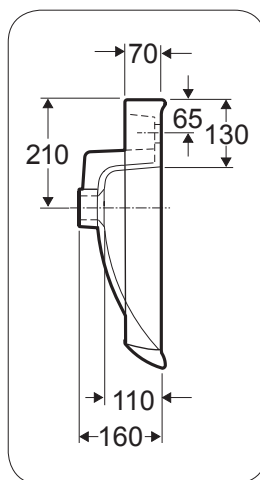
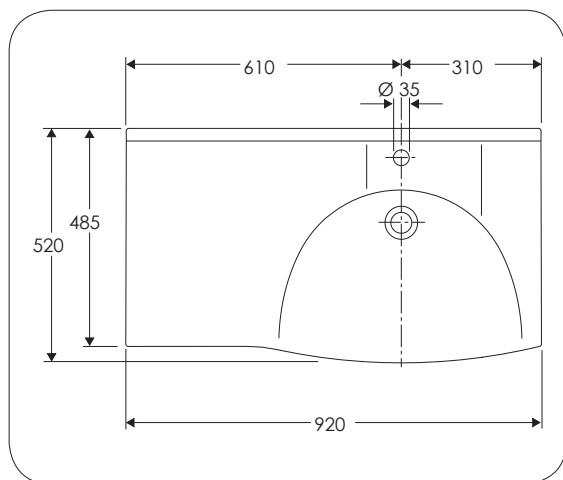
Call 1300 369 273
www.enware.com.au/ifo

Enware Australia Pty Limited
9 Endeavour Rd Caringbah NSW 2229 Australia
Ph: 02 8536 4000 Fax: 02 8556 4055


installingconfidence

Ifo - Sign Basin 900 Right Bowl

IF07472



Version: Nov 15

Call 1300 369 273
www.enware.com.au/ifo

Enware Australia Pty Limited
 9 Endeavour Rd Caringbah NSW 2229 Australia
 Ph: 02 8536 4000 Fax: 02 8556 4055

ENWARE
 installingconfidence