

# Enware D Shape Basin 900 Right Hand Bowl with Integrated Shelf - 1 Tap Hole with Overflow

Vanity top wash basin 920mm with right hand basin providing large vanity surfaces at the back and to the left side of the wash basin.

## KEY FEATURES

- 920mm long vitreous china basin with side wing
- Fully glazed under and over preventing bacteria growth
- Half moon-shaped wash bowl increases user area
- Back-to-wall lip for protection
- Easy clean recessed tap and soap area
- Can be cabinet mounted or wall mounted with brackets
- 1 tap hole with overflow
- Standard plug and waste included
- All basin mounting contact surfaces to be sealed with high grade anti-bacterial silicone of appropriate colour



## PRODUCT CODES

IFO7472	1 x Taphole 1 x Overflow
IFO7472-100	1 x Taphole No Overflow
IFO7470-100	No Taphole No Overflow

Due to ongoing Research and Development, specifications may change without notice.

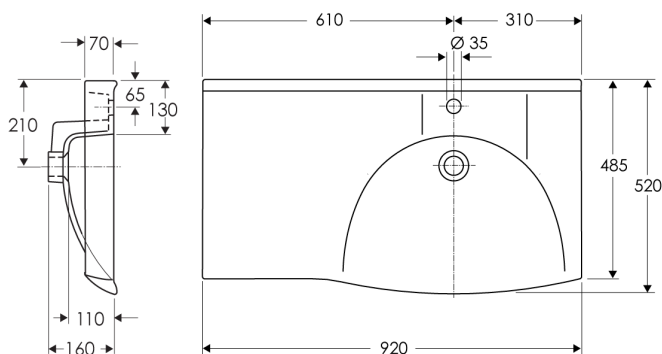
Component specifications may change on some export models.

Refer to warranty statement for warranty details - [www.enware.com.au/warranty](http://www.enware.com.au/warranty).

Products are to be installed in accordance with the Plumbing Code of Australia and AS/NZS3500.

Reference should also be made to the Australasian Health Facility Guidelines (AHFG), ABCB and Local Government regulations when considering the choice of, and the installation of these products.

## TECHNICAL DATA



# Enware D Shape Basin 900 Right Hand Bowl with Integrated Shelf - 1 Tap Hole with Overflow

## REQUIRED OPTIONS

IFO96487	Free-Hanging 900 Wall Mount Basin Bracket - Pair
IFO96487R	Free-Hanging 900 Wall Mount Basin Bracket - Single

## OPTIONAL ACCESSORIES

KOL32400	Pop-Up Plug & Waste
KOL15600	Standard P-Trap - 40mm
IFO15917	Microtrap 40mm - Pop Up
IFO15916	Microtrap 40mm - Plug
WB-BSNBT-CB	Bottle Trap Chrome 40mm

## SPARE PARTS

IFO14934	40mm Plug & Waste 2-Piece
----------	---------------------------