

Enware Mental Health Kit - 500mm Rectangular Basin, Shroud, Waste & P-Trap

A compact kit offering a contemporary sanitary solution with no ligature points. Suitable for hospitals and aged care facilities.

KEY FEATURES

- No concealment area
- No ligature points
- Non-institutional, domestic appearance
- Easy to clean bowl
- AS1428.1 compliant
- Anti-ligature waste supplied
- Mounting bolts included for wall fixing
- Standard P-trap included



PRODUCT CODE

KNP311510-100MHKIT	Enware: Mental Health Kit - 500mm Rectangular Basin, Shroud, Waste & P-Trap
--------------------	---

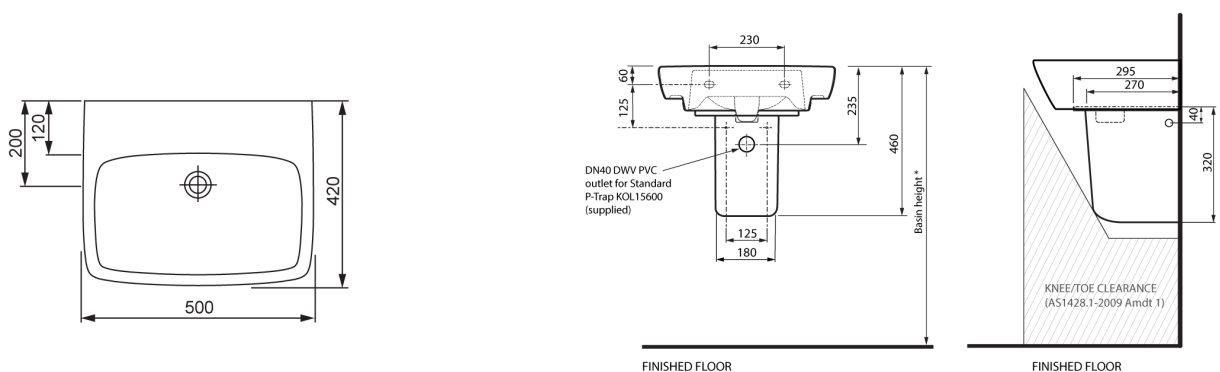


Due to ongoing Research and Development, specifications may change without notice. Component specifications may change on some export models.

Refer to warranty statement for warranty details - www.enware.com.au/warranty.

Products are to be installed in accordance with the Plumbing Code of Australia and AS/NZS3500. Reference should also be made to the Australasian Health Facility Guidelines (AHFG), ABCB and Local Government regulations when considering the choice of, and the installation of these products.

TECHNICAL DATA



* 850 mm (Recommended) / 865mm (AusHFG) / 800-830mm (AS1428.1)

Enware Mental Health Kit - 500mm Rectangular Basin, Shroud, Waste & P-Trap

SPARE PARTS

IFO3240	Security Waste Chrome 40mm Anti Ligature
IFO4316FK	Spare Parts: Shroud Fixing Kit
IFO707	Spare Parts: Lag Bolts Pack of 2 Bolts
KNP37200	Shroud for Enware Rectangular Basin 500mm - Mental Health
KOL15600	Standard P-Trap - 40mm
KNP311500-100	Rectangular Wash Basin 500mm No Tap Hole No Overflow