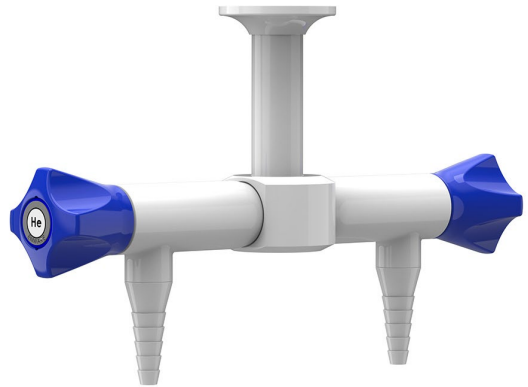


ComLab 2 Way Pendant Needle Valve - Dry Media - Air/ CO2/ HE/ AR/ N2

Enware Commercial Laboratory outlets are supplied with a tapered tube nozzle. The durable powder coat finish gives significant protection against corrosion, discolouration and surface damage. Colour coded metal handles are ergonomically designed for precise feel and fingertip control. Service identification indicators are supplied for compatible dry service types.

KEY FEATURES

- Suited for dry media up to technical gas level 4.0 and higher upon request
- Chemically and ultrasonically cleaned
- Teflon needle valve with stainless steel seat
- Durable white epoxy powder coat finish with coloured metal handles
- 1/2" BSP male inlet tail with 1/4" BSP female thread connection
- Tube nozzle outlet. 3/8" BSP FI when removed
- Blue handle and indicator button identification to DIN EN13792
- Indicator buttons for compatible media included
- Compatible media: Compressed Air, Carbon Dioxide, Helium, Argon, Nitrogen



PRODUCT CODE

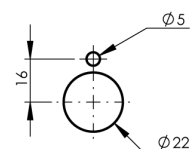
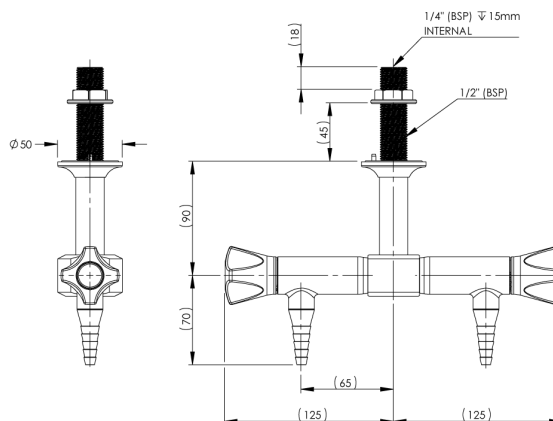
LCN119NDRY	ComLab 2 Way Pendant Needle Valve - Dry Media - Air/ CO2/ HE/ AR/ N2
------------	--

Due to ongoing Research and Development, specifications may change without notice.
Component specifications may change on some export models.
Refer to warranty statement for warranty details - www.enware.com.au/warranty.

ComLab 2 Way Pendant Needle Valve - Dry Media - Air/ CO2/ HE/ AR/ N2

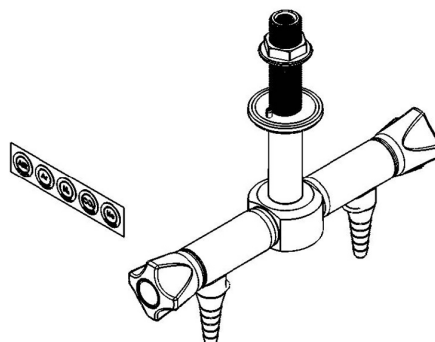
TECHNICAL DATA

Finish	Powder Coating
Valve Type	Needle Valve
Mounting Type	2-Way Pendant
	Suits Reagent Shelf mounting (hanging pendant)
Maximum Needle Valve Working Pressure	700kPa
Maximum Testing Pressure	1000kPa
Inlet Connection	1/2" BSP Male, 1/4" BSP Female
Outlet Connection	Tube Nozzle, 3/8"BSP Female (without nozzle)
Gas Notes	Inert Non-Flammable Dry Services



INSTALLATION DETAIL
(MOUNTING SURFACE CUT OUT)

PLEASE CHECK LOCKING PIN
POSITIONS BEFORE INSTALLATION
AS ORIENTATION MAY VARY



ComLab 2 Way Pendant Needle Valve - Dry Media - Air/ CO2/ HE/ AR/ N2

SPARE PARTS

LCN184	Spare Parts: ComLab - Stuffing Box Assembly - Needle Valve - LCN Products
LCN181	ComLab: Button Replacement - Dry Media - LCN Products
LCN191-BLUE	ComLab: Handle (Blue)
LCN170	Spare Parts: ComLab - Tube Nozzle - LCN Gas Products
LCN193	ComLab: Indicator Mount