

ComLab 1 Way 90 Degree Needle Valve - Vacuum

Enware Commercial Laboratory outlets are supplied with a tapered tube nozzle. The durable powder coat finish gives significant protection against corrosion, discolouration and surface damage. Colour coded metal handles are ergonomically designed for precise feel and fingertip control. Service identification indicators are supplied for compatible dry service types.

KEY FEATURES

- Chemically and Ultrasonically cleaned
- Straight outlet suitable for wall mounting
- Teflon needle valve with stainless steel seat
- Durable white epoxy powder coat finish with coloured metal handles
- 1/2" BSP FI inlet with loose 1/2" BSP male inlet tail with 1/4" BSP female thread connection
- Tube nozzle outlet. 3/8" BSP FI when removed
- Grey Handle and indicator button identification to DIN EN13792
- Compatible media: Vacuum



PRODUCT CODE

LCN140NVAC

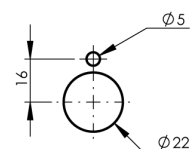
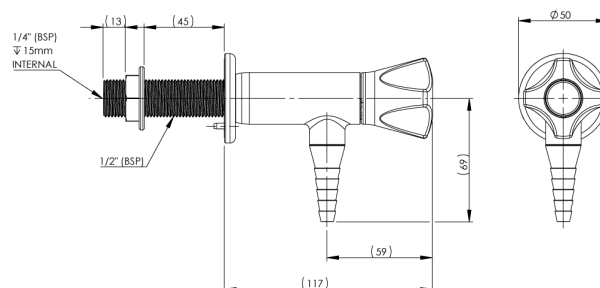
ComLab 1 Way 90 Deg Needle Valve - Vacuum

Due to ongoing Research and Development, specifications may change without notice.
Component specifications may change on some export models.
Refer to warranty statement for warranty details - www.enware.com.au/warranty.

ComLab 1 Way 90 Degree Needle Valve - Vacuum

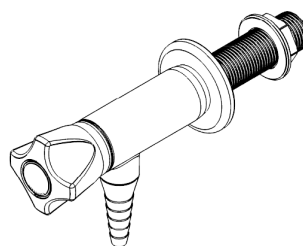
TECHNICAL DATA

| | |
|--|---|
| Finish | Powder Coating |
| Valve Type | Needle Valve |
| Mounting Type | Right Angle Wall Mounted |
| | Suitable for wall and bench mounting |
| Maximum Needle Valve Working Pressure | 700kPa |
| Maximum Testing Pressure | 1000kPa |
| Inlet Connection | 1/2" BSP Female, 1/2" BSP Male, 1/4" BSP Female |
| Outlet Connection | Tube Nozzle, 3/8" BSP Female (without nozzle) |
| Dry Media Options | Vacuum |
| Corrosive chemicals, solids and/or abrasives passed through the Vacuum outlet may cause damage or degradation of components. | |



INSTALLATION DETAIL
(MOUNTING SURFACE CUT OUT)

PLEASE CHECK LOCKING PIN
POSITIONS BEFORE INSTALLATION
AS ORIENTATION MAY VARY



ComLab 1 Way 90 Degree Needle Valve - Vacuum

SPARE PARTS

| | |
|-------------|---|
| LCN184 | Spare Parts: ComLab - Stuffing Box Assembly - Needle Valve - LCN Products |
| LCN181 | ComLab: Button Replacement - Dry Media - LCN Products |
| LCN191-GREY | ComLab: Handle (Grey) |
| LCN193 | ComLab: Indicator Mount |
| LCN170 | Spare Parts: ComLab - Tube Nozzle - LCN Gas Products |
| LCN186 | ComLab: Base Flange for Wall/Bench |