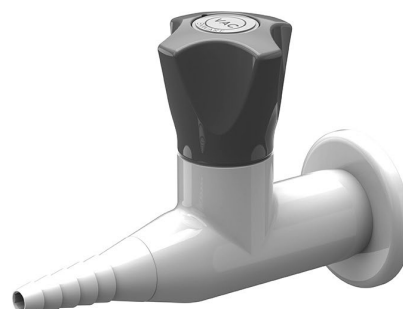


ComLab 1 Way Straight Needle Valve - Vacuum

Enware Commercial Laboratory outlets are supplied with a tapered tube nozzle. The durable powder coat finish gives significant protection against corrosion, discolouration and surface damage. Colour coded metal handles are ergonomically designed for precise feel and fingertip control. Service identification indicators are supplied for compatible dry service types.

KEY FEATURES

- Chemically and ultrasonically cleaned
- Straight outlet suitable for wall mounting
- Teflon needle valve with stainless steel seat
- Durable white epoxy powder coat finish with coloured metal handles
- 1/2" BSP FI Inlet with loose 1/2" BSP male inlet tail with 1/4" BSP female thread connection
- Tube nozzle outlet. 3/8" BSP FI when removed
- Grey handle and indicator button identification to DIN EN13792
- Compatible media: Vacuum



PRODUCT CODE

LCN142NVAC

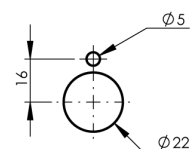
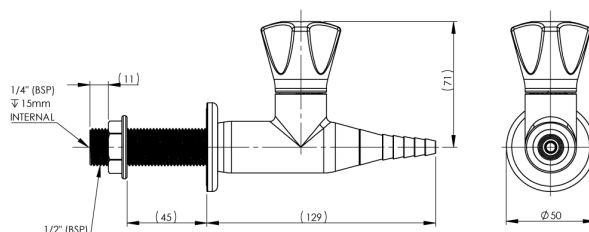
ComLab 1 Way Straight Needle Valve -
Vacuum

Due to ongoing Research and Development, specifications may change without notice.
Component specifications may change on some export models.
Refer to warranty statement for warranty details - www.enware.com.au/warranty.

ComLab 1 Way Straight Needle Valve - Vacuum

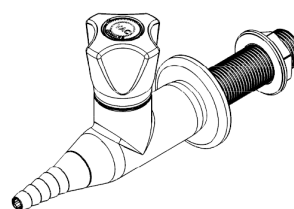
TECHNICAL DATA

Finish	Powder Coating
Valve Type	Needle Valve
Mounting Type	Straight Wall Mounted
	Suitable for wall mounting
Maximum Needle Valve Working Pressure	700kPa
Maximum Testing Pressure	1000kPa
Inlet Connection	1/2" BSP Female, 1/2" BSP Male, 1/4" BSP Female
Outlet Connection	Tube Nozzle, 3/8" BSP Female (without nozzle)
Dry Media Options	Vacuum
Corrosive chemicals, solids and/or abrasives passed through the Vacuum outlet may cause damage or degradation of components.	



INSTALLATION DETAIL
(MOUNTING SURFACE CUT OUT)

PLEASE CHECK LOCKING PIN
POSITIONS BEFORE INSTALLATION
AS ORIENTATION MAY VARY



ComLab 1 Way Straight Needle Valve - Vacuum

SPARE PARTS

LCN184	Spare Parts: ComLab - Stuffing Box Assembly - Needle Valve - LCN Products
LCN181	ComLab: Button Replacement - Dry Media - LCN Products
LCN191-GREY	ComLab: Handle (Grey)
LCN193	ComLab: Indicator Mount
LCN170	Spare Parts: ComLab - Tube Nozzle - LCN Gas Products
LCN186	ComLab: Base Flange for Wall/Bench