

ComLab Bench Mounted 2 Way 90 Degree Needle Valve - Natural Gas/LPG

Enware Commercial Laboratory outlets are supplied with a tapered tube nozzle. The durable powder coat finish gives significant protection against corrosion, discolouration and surface damage. Colour coded metal handles are ergonomically designed for precise feel and fingertip control. Service identification indicators are supplied for compatible dry service types.

KEY FEATURES

- AGA approved
- Suited for burning gases up to technical gas level 2.0
- Teflon needle valve with stainless steel seat
- Durable white epoxy powder coat finish with coloured metal handles
- 1/2" BSP male inlet tail with 1/4" BSP female thread connection
- Tube nozzle outlet. 3/8" BSP FI when removed
- Yellow handle and indicator button identification to DIN EN13792
- Indicator buttons for compatible media included
- Compatible media: Natural Gas, LPG



PRODUCT CODE

LCN146NGAS	ComLab Bench Mounted 2 Way 90 Degree Needle Valve - Natural Gas/LPG
------------	---

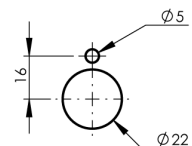
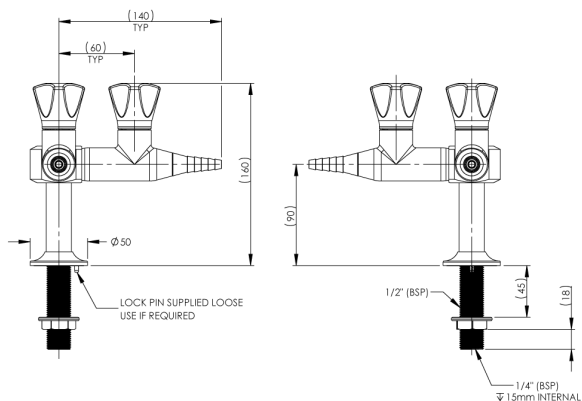


Due to ongoing Research and Development, specifications may change without notice.
Component specifications may change on some export models.
Refer to warranty statement for warranty details - www.enware.com.au/warranty.

ComLab Bench Mounted 2 Way 90 Degree Needle Valve - Natural Gas/LPG

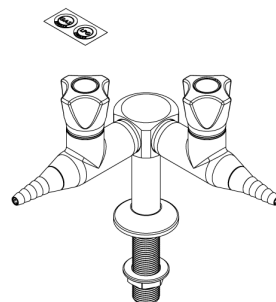
TECHNICAL DATA

Finish	Powder Coating
Valve Type	Needle Valve
Mounting Type	2-Way 90 Degree Bench Mounted
Maximum Needle Valve Working Pressure	7kPa
Maximum Testing Pressure	21Kpa
Inlet Connection	1/2" BSP Male, 1/4" BSP Female
Outlet Connection	Tube Nozzle, 3/8" BSP Female (without nozzle)
Gas Notes	Unregulated natural gas outlet
Burning Gas Options	Natural Gas, LPG



INSTALLATION DETAIL
(MOUNTING SURFACE CUT OUT)

PLEASE CHECK LOCKING PIN
POSITIONS BEFORE INSTALLATION
AS ORIENTATION MAY VARY



ComLab Bench Mounted 2 Way 90 Degree Needle Valve - Natural Gas/LPG

SPARE PARTS

LCN184	Spare Parts: ComLab - Stuffing Box Assembly - Needle Valve - LCN Products
LCN191-YELLOW	ComLab Handle (Yellow)
LCN193	ComLab: Indicator Mount
LCN181	ComLab: Button Replacement - Dry Media - LCN Products
LCN170	Spare Parts: ComLab - Tube Nozzle - LCN Gas Products