

# ComLab Bench Mounted 2 Way 180 Degree Push Turn Gas Turret - Natural Gas/LPG

Enware Commercial Laboratory outlets are supplied with a tapered tube nozzle. The durable powder coat finish gives significant protection against corrosion, discolouration and surface damage. Colour coded metal handles are ergonomically designed for precise feel and fingertip control. Service identification indicator is supplied for compatible gas service types.

## KEY FEATURES

- AGA approved
- Suited for burning gases up to technical gas level 2.0
- Push-turn handle to turn gas on, prevents accidental activation
- Green Safety Ring indicates when valve is off
- Durable white epoxy powder coat finish with coloured metal handles
- 1/2" BSP male inlet tail with 1/4" BSP female thread connection
- Tube nozzle outlet. 3/8" BSP FI when removed
- Yellow handle and indicator button identification to DIN EN13792
- Indicator buttons for compatible media included
- Compatible media: Natural Gas, LPG

Due to ongoing Research and Development, specifications may change without notice.  
Component specifications may change on some export models.  
Refer to warranty statement for warranty details - [www.enware.com.au/warranty](http://www.enware.com.au/warranty).



## PRODUCT CODE

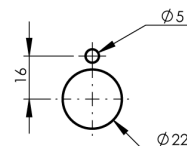
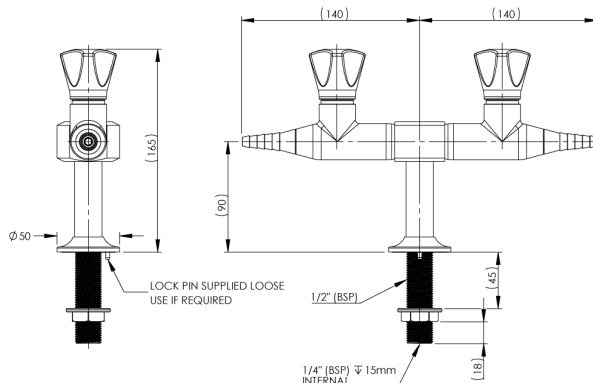
LCN147BGAS	ComLab Bench Mounted 2 Way 180 Degree Push Turn Gas Turret - Natural Gas/LPG
------------	--



# ComLab Bench Mounted 2 Way 180 Degree Push Turn Gas Turret - Natural Gas/LPG

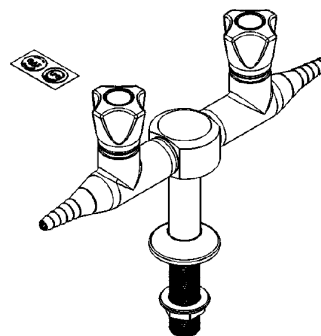
## TECHNICAL DATA

Finish	Powder Coating
Valve Type	Push-To-Turn Ceramic Disc
Mounting Type	2-Way 180 Degree Bench Mounted
Maximum Recommended Pressure	7kPa
Maximum Testing Pressure	21kPa
Inlet Connection	1/2" BSP Male, 1/4" BSP Female
Outlet Connection	Tube Nozzle, 3/8" BSP Female (without nozzle)
Connection Notes	Unregulated outlet designed for supply to Bunsen Burners and similar equipment
Burning Gas Options	Natural Gas, LPG



### INSTALLATION DETAIL (MOUNTING SURFACE CUT OUT)

PLEASE CHECK LOCKING PIN  
POSITIONS BEFORE INSTALLATION  
AS ORIENTATION MAY VARY



# ComLab Bench Mounted 2 Way 180 Degree Push Turn Gas Turret - Natural Gas/LPG

## SPARE PARTS

LCN192	Spare Parts: ComLab - Push To Turn Top Assembly - Complete - Burning Gas Application
LCN170	Spare Parts: ComLab - Tube Nozzle - LCN Gas Products
LCN181	ComLab: Button Replacement - Dry Media - LCN Products