

ComLab Bench Mounted 2 Way 180 Degree Needle Valve - Oxygen

Enware Commercial Laboratory outlets are supplied with a tapered tube nozzle. The durable powder coat finish gives significant protection against corrosion, discolouration and surface damage. Colour coded metal handles are ergonomically designed for precise feel and fingertip control. Service identification indicators are supplied for compatible dry service types.

KEY FEATURES

- Suited for dry media up to technical gas level 4.0 and higher upon request
- Chemically and ultrasonically cleaned
- Teflon needle valve with stainless steel seat
- Durable white epoxy powder coat finish with coloured metal handles
- 1/2" BSP male inlet tail with 1/4" BSP female thread connection
- Tube nozzle outlet. 3/8" BSP FI when removed
- Blue handle and indicator button identification to DIN EN13792
- Indicator buttons for compatible media included
- Compatible media: Oxygen, Carbogen

Due to ongoing Research and Development, specifications may change without notice.
Component specifications may change on some export models.
Refer to warranty statement for warranty details - www.enware.com.au/warranty.



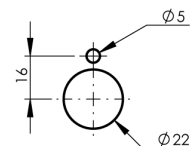
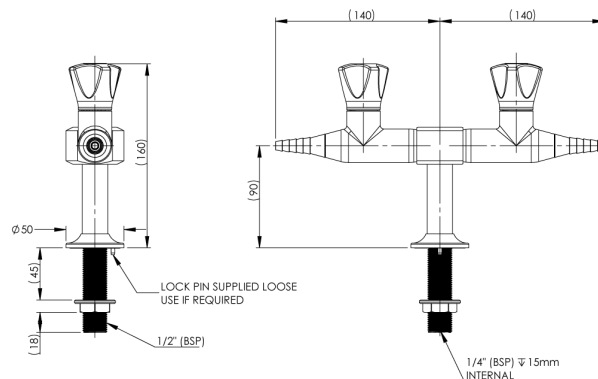
PRODUCT CODE

LCN147NOXY	ComLab Bench Mounted 2 Way 180 Degree Needle Valve - Oxygen
------------	---

ComLab Bench Mounted 2 Way 180 Degree Needle Valve - Oxygen

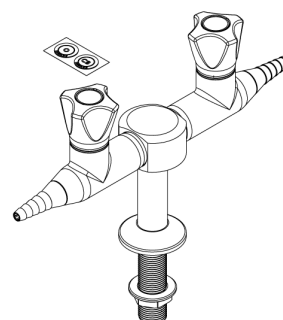
TECHNICAL DATA

Finish	Powder Coating
Valve Type	Needle Valve
Mounting Type	2-Way 180 Degree Bench Mounted
Maximum Needle Valve Working Pressure	700kPa
Maximum Testing Pressure	1000kPa
Inlet Connection	1/2" BSP Male, 1/4" BSP Female
Outlet Connection	Tube Nozzle, 3/8" BSP Female (without nozzle)
Dry Media Options	Oxygen or Carbogen
Technical Notes	Care must be taken to ensure all pipework is free of grease and oil



INSTALLATION DETAIL
(MOUNTING SURFACE CUT OUT)

PLEASE CHECK LOCKING PIN
POSITIONS BEFORE INSTALLATION
AS ORIENTATION MAY VARY



ComLab Bench Mounted 2 Way 180 Degree Needle Valve - Oxygen

SPARE PARTS

LCN184	Spare Parts: ComLab - Stuffing Box Assembly - Needle Valve - LCN Products
LCN191-BLUE	ComLab Handle (Blue)
LCN181	ComLab: Button Replacement - Dry Media - LCN Products
LCN193	ComLab: Indicator Mount
LCN170	Spare Parts: ComLab - Tube Nozzle - LCN Gas Products