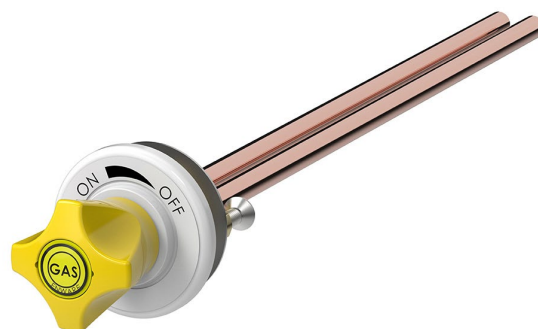


ComLab Front Panel Valve 3/8"x 300mm Copper Inlet/Outlet - Natural Gas/LPG

Enware laboratory front panel valves are designed for fitting to the front panels or mullions of Fume Cupboards or similar equipment. The durable powder coat finish gives significant protection against corrosion, discolouration and surface damage. Slimline handles are ergonomically designed for precise feel and fingertip control. Handles are colour coded for easy service identification and use complimentary buttons. Designed to be connected to incoming service and remote outlet nozzle.

KEY FEATURES

- AGA approved
- Suited for burning gases up to technical gas level 2.0
- Teflon needle valve with stainless steel seat
- Durable white epoxy powder coat finish with coloured metal handles
- 3/8" copper inlet/ outlet tail
- Can be fixed from the front with screws (not supplied) or from the rear with backnut
- Yellow handle and indicator button identification to DIN EN13792
- Indicator buttons for compatible media included
- Compatible media: Natural Gas, LPG



PRODUCT CODE

LCN150NRCGAS	ComLab Front Panel Valve 3/8"x 300mm Copper Inlet/Outlet - Natural Gas/LPG
--------------	---

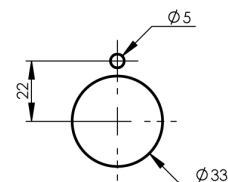
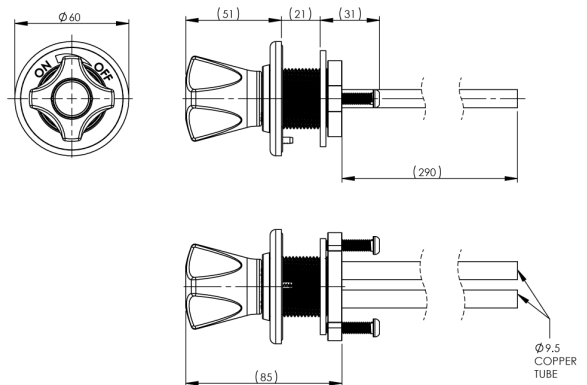


Due to ongoing Research and Development, specifications may change without notice.
Component specifications may change on some export models.
Refer to warranty statement for warranty details - www.enware.com.au/warranty.

ComLab Front Panel Valve 3/8"x 300mm Copper Inlet/Outlet - Natural Gas/LPG

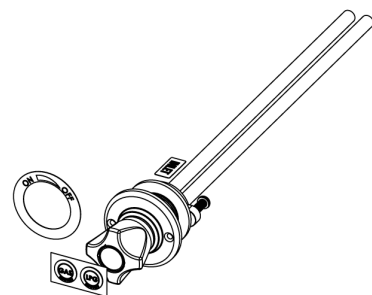
TECHNICAL DATA

Finish	Powder Coating
Valve Type	Needle Valve
Mounting Type	Front Panel Valve
Mounting Notes	Can be mounted from front with screws or secured from back with back nut
Maximum Recommended Pressure	7kPa
Maximum Testing Pressure	21kPa
Inlet Connection	3/8" OD Copper Tube
Outlet Connection	3/8" OD Copper Tube
Connection Notes	Must be connected using approved fittings
Burning Gas Options	Natural Gas, LPG
Gas Notes	Unregulated natural gas control



INSTALLATION DETAIL
(MOUNTING SURFACE CUT OUT)

PLEASE CHECK LOCKING PIN
POSITIONS BEFORE INSTALLATION
AS ORIENTATION MAY VARY



ComLab Front Panel Valve 3/8"x 300mm Copper Inlet/Outlet - Natural Gas/LPG

SPARE PARTS

LCN184	Spare Parts: ComLab - Stuffing Box Assembly - Needle Valve - LCN Products
LCN191-YELLOW	ComLab Handle (Yellow)
LCN193	ComLab: Indicator Mount
LCN181	ComLab: Button Replacement - Dry Media - LCN Products