

ComLab 150mm 90 Degree Fume Cupboard Outlet - Vacuum

Enware Commercial Laboratory outlets are supplied with a tapered tube nozzle. The durable powder coat finish gives significant protection against corrosion, discolouration and surface damage. Colour coded back plate and indicator rings are provided to identify services.

KEY FEATURES

- Suited for Vacuum
- Chemically and ultrasonically cleaned
- 150mm 90 degree outlet suitable mounting in Fume Cupboards
- Durable white epoxy powder coat finish with colour coded back plate and indicator rings
- 1/2" BSP male inlet tail and backnut with internal 1/4" BSP female thread connection
- Tube nozzle outlet. 3/8" BSP FI when removed



PRODUCT CODE

LCN166VAC

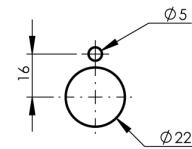
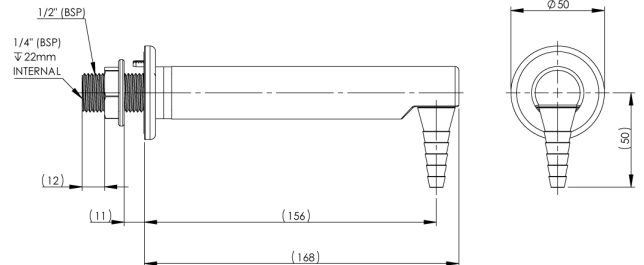
ComLab 150mm 90 Degree Fume Cupboard
Outlet - Vacuum

Due to ongoing Research and Development, specifications may change without notice.
Component specifications may change on some export models.
Refer to warranty statement for warranty details - www.enware.com.au/warranty.

ComLab 150mm 90 Degree Fume Cupboard Outlet - Vacuum

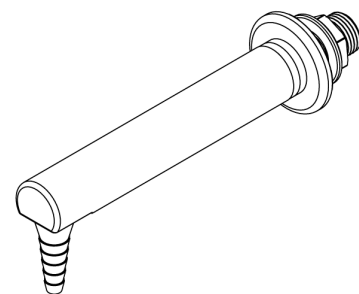
TECHNICAL DATA

Finish	Powder Coating
Mounting Type	90 Degree Fume Cupboard Outlet
Maximum Recommended Pressure	700kPa
Inlet Connection	1/2" BSP Male, 1/4" BSP Female
Technical Notes	Suitable for connection with LC188 hose, hard plumbing, quick connect, compression fitting



INSTALLATION DETAIL
(MOUNTING SURFACE CUT OUT)

PLEASE CHECK LOCKING PIN
POSITIONS BEFORE INSTALLATION
AS ORIENTATION MAY VARY



OPTIONAL ACCESSORIES

LC188	1 Metre Flexible Hose - 1/4"X 1/2" F&F Connectors - Gas
LCN174	Spare Parts: Quick Connect Elbow - 1/4" BSP x 8mm 90 Degree

ComLab 150mm 90 Degree Fume Cupboard Outlet - Vacuum

SPARE PARTS

LCN170	Spare Parts: ComLab - Tube Nozzle - LCN Gas Products
--------	---
