

ComLab 150mm 90 Degree Fume Cupboard Outlet - Water

Enware Commercial Laboratory outlets are supplied with a tapered tube nozzle. The durable powder coat finish gives significant protection against corrosion, discolouration and surface damage. Colour coded back plate and indicator rings are provided to identify services.

KEY FEATURES

- 90 degree outlet suitable mounting in Fume Cupboards
- Durable white epoxy powder coat finish with colour coded back plate and indicator rings
- 1/2" BSP male inlet tail and backnut with internal 1/4" BSP female thread connection
- Tube nozzle outlet with flow control and check valve. 3/8" BSP FI when removed
- Indicator rings for compatible media included
- Compatible media: Cold Water, Hot Water, Chilled Water
- Lead free brass



PRODUCT CODE

| | |
|-------------|-----------------------------------------------------|
| LCN166WATER | ComLab 150mm 90 Degree Fume Cupboard Outlet - Water |
|-------------|-----------------------------------------------------|



Products are to be installed in accordance with the Plumbing Code of Australia and AS/NZS3500. Reference should also be made to the Australasian Health Facility Guidelines (AHFG), ABCB and Local Government regulations when considering the choice of, and the installation of these products.

This product is compliant with the Lead Free requirements of NCC Volume Three.

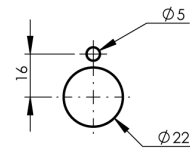
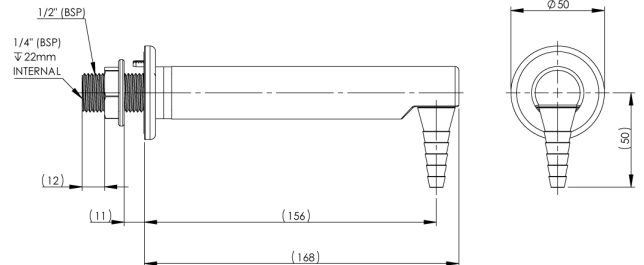
Due to ongoing Research and Development, specifications may change without notice. Component specifications may change on some export models.

Refer to warranty statement for warranty details - www.enware.com.au/warranty.

ComLab 150mm 90 Degree Fume Cupboard Outlet - Water

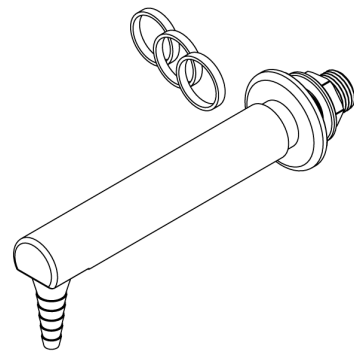
TECHNICAL DATA

| | |
|------------------------------|--------------------------------------------------------------------------------------------|
| Standard WELS | 5 Stars |
| Standard WELS Flow Rate | 6 L/min |
| Finish | Powder Coating |
| Mounting Type | 90 Degree Fume Cupboard Outlet |
| Water Options | Cold, Hot, Chilled |
| Maximum Working Temperature | 90°C |
| Maximum Recommended Pressure | 700kPa |
| Inlet Connection | 1/2" BSP Male, 1/4" BSP Female |
| Technical Notes | Suitable for connection with LC189 hose, hard plumbing, quick connect, compression fitting |



INSTALLATION DETAIL (MOUNTING SURFACE CUT OUT)

PLEASE CHECK LOCKING PIN
POSITIONS BEFORE INSTALLATION
AS ORIENTATION MAY VARY



ComLab 150mm 90 Degree Fume Cupboard Outlet - Water

OPTIONAL ACCESSORIES

| | |
|----------|------------------------------------------------------------|
| LCN174 | Quick Connect Elbow - 1/4" BSP x 8mm 90 Degree |
| LC189 | 1 Metre Flexible Hose - 1/4" x 1/2" F&F Connectors - Water |
| LCN172-5 | Aerator and Adaptor - 5.7 L/min Laminar Flow TJ - LCN |
| LCN175 | Laboratory - LCN Adaptor - 1/2" BSP M Outlet |

SPARE PARTS

| | |
|--------|--------------------------------------------------------------|
| LCN171 | ComLab - Tube Nozzle - Dual Check Valve - LCN Water Products |
| LCN187 | Dual Check Valve - LCN Nozzle |
| LCN190 | Flow Control - LCN Tube Nozzle - 6L/min |