

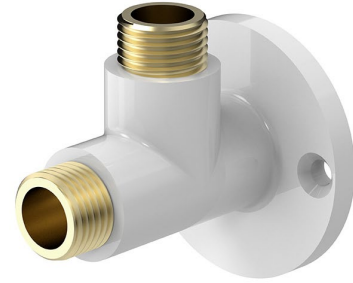
ComLab: 2-Way Wall Bulkhead Fitting - Dry Services - 15mm

2-Way Wall Bulkhead Fitting - Dry Services - 15mm for Dry Services.

The durable powder coat finish gives significant protection against corrosion, discolouration and surface damage.

KEY FEATURES

- Suited for dry services
- Durable white epoxy powder coat finish
- 1/2" BSP thread connections



PRODUCT CODE

LCN179

ComLab: 2-Way Wall Bulkhead Fitting - Dry Services - 15mm

Due to ongoing Research and Development, specifications may change without notice. Component specifications may change on some export models. Refer to warranty statement for warranty details - www.enware.com.au/warranty.

TECHNICAL DATA

Finish	Powder Coating
Inlet Connection	1/2" BSP
Outlet Connection	1/2" BSP

