

# Leva Type 51 Wall Mounted Adjustable Mixing Set - 1/4 Turn Ceramic Disc

The Leva range combines outstanding quality with functional, beautiful design. Ideal for Hospital/Health and Aged Care Clinical applications, providing the benefits of easier reach and control. The 150mm lever allows hands-free elbow operation.

Tap body and handles are designed to reduce bacterial capture points, and make cleaning easier.

This product is suitable to be used in a Type A or Type B clinical hand wash application. Surgeon tapware is suitable as a surgeon set or surgeon mixer.

Adjustable inlet centres allow easy retrofit to existing pipework.



## KEY FEATURES

- 1/4 Turn Ceramic disc
- Ergonomic sleek design 150mm lever handles
- Adjustable inlet centres (150 - 348mm)
- Robust construction for superior performance
- Unique handle fixing is easy to fit, secure and durable
- Concealed pressure compensating flow controlled aerator for a clean look and water efficiency
- Clear identification on all lever handles with blue, yellow or red coloured indicator collars (3 colour indicator collars included)
- SPC020 swivel spout with laminar flow - suited to healthcare application
- 5 Star (5Lpm) laminar flow aerator supplied standard
- Bright chrome finish
- Lead free

## PRODUCT CODES

LEV150422	With SPC020 150mm Swivel Spout - Laminar Flow
LEV150422X	No Spout



Products are to be installed in accordance with the Plumbing Code of Australia and AS/NZS3500. Reference should also be made to the Australasian Health Facility Guidelines (AHFG), ABCB and Local Government regulations when considering the choice of, and the installation of these products.

This product is compliant with the Lead Free requirements of NCC Volume Three.

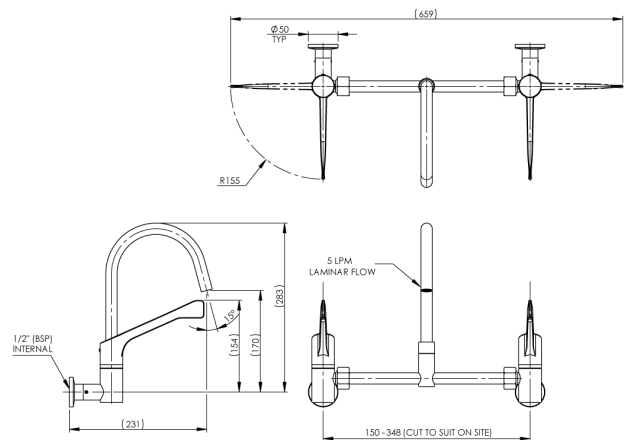
Due to ongoing Research and Development, specifications may change without notice. Component specifications may change on some export models.

Refer to warranty statement for warranty details - [www.enware.com.au/warranty](http://www.enware.com.au/warranty).

# Leva Type 51 Wall Mounted Adjustable Mixing Set - 1/4 Turn Ceramic Disc

## TECHNICAL DATA

Inlet Connection	1/2" BSP (15mm) FI
Recommended Pressure	50kPa – 500kPa
Maximum Static Pressure	800kPa
Maximum Recommended Temperature	70°C
Maximum Ceramic Disc Working Temperature	85°C
Flow Rate	5 L/min
Valve Type	1/4 Turn Ceramic Disc
Finish	Chrome



### Water Flow Projection

Water Pressure: 350kPa  
Flow Rate: 5 L/min

