

Leva: Sequential In-Wall Basin Mixer - 230mm Spout

Sequential Leva range offers premium quality, ergonomic design and effortless activation. It is built for the rigours of daily use and the diversity of user groups. Single plane sequential movement is a great feature as it provides

effortless activation using either hand or wrist operation. The sequential lever turns progressively from “off” to “cold” to “mixed”.

KEY FEATURES

- Sequential Ceramic Disc Mixing Cartridge ensures ultimate control with cold start up and stop
- Colour Indicators for Hot/ Warm, Cold and Off
- Adjustable wall flange with o-ring seal around mixer body
- Compact design - 50mm in-wall depth
- With SPC250 spout
- 6 Lpm Laminar Flow aerator



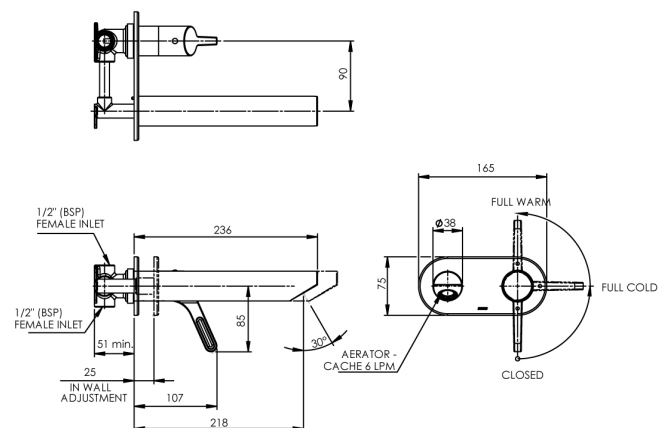
PRODUCT CODE

LEV80306WSQ-250	LEVA INWALL SQ BASIN MIXER WITH SPC250
-----------------	--

Due to ongoing Research and Development, specifications may change without notice.
Component specifications may change on some export models.
Refer to warranty statement for warranty details - www.enware.com.au/warranty.

TECHNICAL DATA

Finish	Chrome
Valve Type	Ceramic Disc
Minimum Working Temperature	5°C
Maximum Working Temperature	85°C
Maximum Recommended Pressure	500kPa
Minimum Working Pressure	50kPa
Maximum Working Pressure	800kPa
Primary Flow Rate	5L/min



SPARE PARTS

LEVSQSBA-180	Spare Parts: Leva - Sequential - Cartridge Kit
WBSQSHSBA	Spare Parts: Wellbeing - Stuffing Box Assembly - SQ Shower Mixer - SQL 180