

# Type 16C7 Laboratory Stop Tap 200mm Swivel and Fixed Outlet Aerated/ Tube Nozzle - Ceramic Disc Lever Handle

A single hole laboratory tap with lever handle and 200mm swivel spout and locking mechanism for fixed spout. Supplied with 6 Star Aerator and 5 Star Tube Nozzle. Can be installed Left or Right Hand orientation. This product is also available with Vandal Proof School Pattern Handle - LF109S

## KEY FEATURES

- Ceramic Disc
- Quarter turn lever handle
- 200mm Spout can be Fixed or Swivel
- Left or Right Handed
- Aerated (WELS 6 Star)
- Tube Nozzle (WELS 5 Star)
- Anti-rotation pins
- Vandal-resistant 80mm lever handle with Cold (Blue) indicator
- High quality construction with durable chrome plating
- Lead free brass



## PRODUCT CODE

LF109S-65

Type 16C7 Laboratory Stop Tap 200mm Swivel and Fixed Outlet Aerated/ Tube Nozzle - Ceramic Disc Lever Handle



Products are to be installed in accordance with the Plumbing Code of Australia and AS/NZS3500. Reference should also be made to the Australasian Health Facility Guidelines (AHFG), ABCB and Local Government regulations when considering the choice of, and the installation of these products.

This product is compliant with the Lead Free requirements of NCC Volume Three.

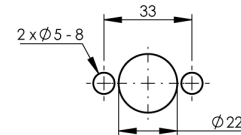
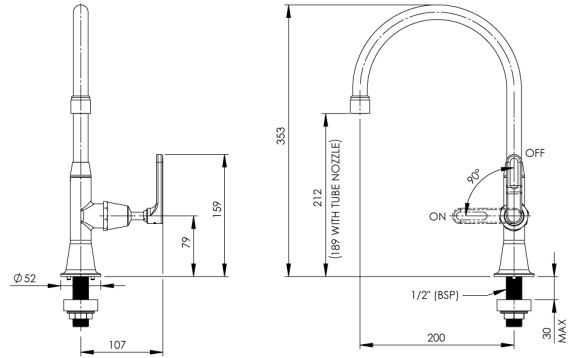
Due to ongoing Research and Development, specifications may change without notice. Component specifications may change on some export models.

Refer to warranty statement for warranty details - [www.enware.com.au/warranty](http://www.enware.com.au/warranty).

# Type 16C7 Laboratory Stop Tap 200mm Swivel and Fixed Outlet Aerated/ Tube Nozzle - Ceramic Disc Lever Handle

## TECHNICAL DATA

WELS Category	Tapware
Standard WELS	5 Stars
Standard WELS Flow Rate	6 L/min
First Additional WELS	6 Stars
First Additional WELS Flow Rate	3.5 L/min
WELS Notes	Supplied with Aerator x1, Tube Nozzle x 1
Finish	Chrome
Valve Type	1/4 Turn Ceramic Disc
Water Options	Cold
Maximum Ceramic Disk Operating Temperature	85°C
Maximum Recommended Pressure	500kPa
Maximum Static Pressure	800kPa
Inlet Connection	1/2" BSP (15mm) MI



INSTALLATION DETAIL  
(BENCHTOP CUT OUT)

PLEASE CHECK LOCKING PIN  
POSITIONS BEFORE INSTALLATION  
AS ORIENTATION MAY VARY

## SPARE PARTS

VPQ380	School Pattern Stuffing Box Assembly - Bib/Pillar - 1/2 Turn Ceramic Disc
LIV80378-B	Lever Handle 80mm – Blue
MIS590	Vandal Proof Key Only
SP310	Tube Nozzle 15mm
SP303	Aerator - Anti-Vandal - No.7
SP304	Aerator - Anti-Vandal - Key to Suit - No.7