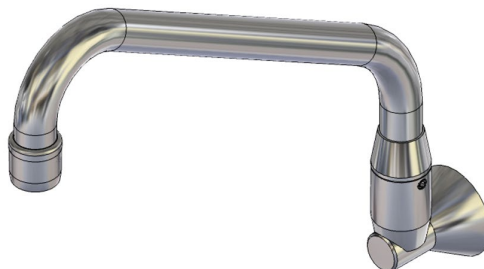


# Wall Mounted Standard Swivel Sink Spout - 265mm

Enware's Classic range of outlets combine function with style and are designed for superior performance. Crafted from DR (Dezincification Resistant) Brass, with a practical range of attachments, Enware Classic outlets deliver proven durability.

## KEY FEATURES

- Bright Chrome finish
- Full Swivel or Restricted Swivel (approx. 120 degree) options available to suit your application
- WELS 5 Star rating (6 L/min) aerator supplied standard, with 4 L/min aerator (supplied in carton)



## PRODUCT CODE

SP111

Wall Mounted Standard Swivel Sink Spout - 265mm



Products are to be installed in accordance with the Plumbing Code of Australia and AS/NZS3500. Reference should also be made to the Australasian Health Facility Guidelines (AHFG), ABCB and Local Government regulations when considering the choice of, and the installation of these products.

This product is compliant with the Lead Free requirements of NCC Volume Three.

Due to ongoing Research and Development, specifications may change without notice. Component specifications may change on some export models.

Refer to warranty statement for warranty details - [www.enware.com.au/warranty](http://www.enware.com.au/warranty).

## TECHNICAL DATA

Maximum Working Temperature	70°C
Minimum Recommended Pressure	50 kPa
Maximum Recommended Pressure	500 kPa
Standard WELS Flow Rate	6 L/min
Inlet Connection	1/2" BSP (15mm) FI
Finish	Chrome

