

# Delabie TempoSoft Time-Flow Basin Tap - 7 Seconds

Time flow basin tap with easy to use soft-push operation. Automatic shut-off for improved hygiene and reduced water wastage. Ideal for public washrooms, schools, childcare and applications where easy activation is beneficial.

## KEY FEATURES

- Soft push activation
- Approximately 7 second\* flow time
- Automatic shut-off without manual contact
- Supplied bright chrome finish with blue, yellow and red indicators
- Hygienic, anti-scale flow straightener outlet
- Brass body with vandal resistant design

\* Flow times are indicative only and may vary depending on water supply pressure and flow conditions



## PRODUCT CODE

TFC740510

Delabie TempoSoft Time-Flow Basin Tap  
- 7 Seconds



Products are to be installed in accordance with the Plumbing Code of Australia and AS/NZS3500. Reference should also be made to the Australasian Health Facility Guidelines (AHFG), ABCB and Local Government regulations when considering the choice of, and the installation of these products.

This product is compliant with the Lead Free requirements of NCC Volume Three.

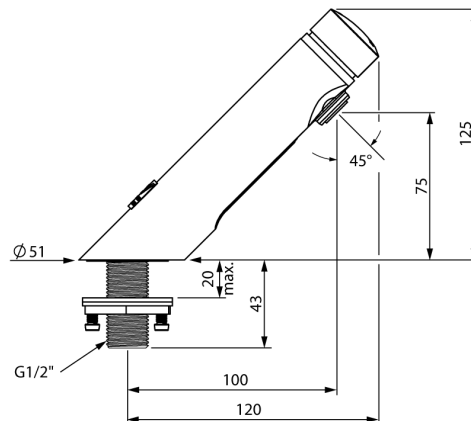
Due to ongoing Research and Development, specifications may change without notice. Component specifications may change on some export models.

Refer to warranty statement for warranty details - [www.enware.com.au/warranty](http://www.enware.com.au/warranty).

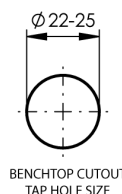
# Delabie TempoSoft Time-Flow Basin Tap - 7 Seconds

## TECHNICAL DATA

Inlet Connection	1/2" BSP (15mm) MI
Recommended Pressure	250kPa – 300kPa
Working Pressure Range	100kPa – 500kPa
Maximum Testing Pressure	1000 kPa
Maximum Recommended Temperature	50°C
Maximum Working Temperature	70°C
Valve Type	Time Flow
Flow Time	7 Seconds*
Flow Rate	5 L/min
Valve Type	Time Flow
Operating Force	18N @300kPa
Finish	Chrome
* Enware-Delabie time flow tapware uses mechanical technology and flow times may vary under different flow and pressure conditions	
Flow can be adjusted by repositioning the marker ring on the cartridge	



INSTALLATION DETAIL



OPTIONAL:  
THKIT22-35  
22mm x 35mm spacer to suit 35mm tap hole  
with seal washer



## AS1428.1 Compliance

Meets the dimensional requirements when used with suitable basins.

Important: This information is provided as a guide only and is based on AS1428.1-2021. Independent design assessment and approval by an appropriately qualified consultant is required to ensure compliance with standards and building code requirements.

## OPTIONAL ACCESSORIES

THKIT22-35	22mm x 35mm spacer to suit 35mm tap hole
------------	--

# Delabie TempoSoft Time-Flow Basin Tap - 7 Seconds

## SPARE PARTS

