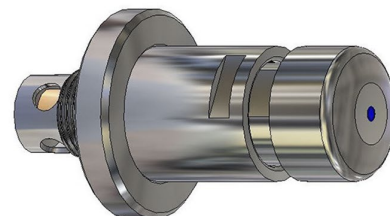


Time-Flow Recess Adaptor - 15 Seconds (-5/+5)

KEY FEATURES

- 15 seconds* time flow
- Automatic shut off
- Push button operation
- Suits standard tap body



* Flow times are indicative only and may vary depending on water supply pressure and flow conditions

PRODUCT CODE

TFC794R	Time-Flow Recess Adaptor - 15 Seconds (-5/+5)
---------	---



Products are to be installed in accordance with the Plumbing Code of Australia and AS/NZS3500. Reference should also be made to the Australasian Health Facility Guidelines (AHFG), ABCB and Local Government regulations when considering the choice of, and the installation of these products.

This product is compliant with the Lead Free requirements of NCC Volume Three.

Due to ongoing Research and Development, specifications may change without notice. Component specifications may change on some export models.

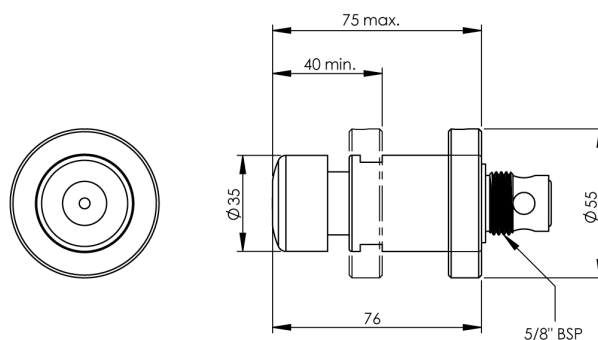
Refer to warranty statement for warranty details - www.enware.com.au/warranty.

TECHNICAL DATA

Recommended Pressure	250kPa – 300kPa
Working Pressure Range	100kPa – 500kPa
Maximum Testing Pressure	1000kPa
Maximum Working Temperature	70°C
Flow Time	15 Seconds*
Inlet Connection	1/2" BSP (15mm) MI
Outlet Connection	1/2" BSP (15mm) MI
Valve Type	Time Flow
Operating Force	47N@ 300kPa
Finish	Chrome

* Enware-Delabie time flow tapware uses mechanical technology and flow times may vary under different flow and pressure conditions.

Flow adjustment Allen screw is located under the indicator button.



Time-Flow Recess Adaptor - 15 Seconds (-5/+5)

SPARE PARTS

TFC790	Delabie - TempoStop Time-Flow Cartridge and Button To Suit Type TFC745/746/747 - Push Button Models
TFC797	Delabie - TempoStop Service Kit - Basin - TFC735/745/746
TFC015	Delabie - Time-Flow Chamber Replacement - White
TFCS743001	Spare Parts: Delabie - TempoStop Spare Button - Blue
TFCS743002	Spare Parts: Delabie - TempoStop Spare Button - Red