

School Pattern Dual Mixer with SP020 Curved Swivel Spout - Jumper Valve

Enware's vandal resistant School Pattern tapware is constructed from dezincification resistant (DR) brass with durable chrome plating and an easy to clean design. The handle features a vandal resistant internal locking ring securing it to the spindle and requires a special key to remove.

KEY FEATURES

- Jumper Valve
- Curved swivel spout ("No spout" option available)
- Vandal resistant school pattern handle
- Blue (Cold), Yellow (Warm) and Red (Hot) indicator buttons supplied standard
- Serviceable with all wearing components replaceable, thus providing an even longer life
- Constructed from dezincification resistant (DR) brass
- Durable bright chrome finish
- 3.8 lpm aerator supplied installed. 6 lpm aerator and tube nozzle supplied loose in carton.



PRODUCT CODES

VP370	School Pattern Dual Mixer with SP020 Curved Swivel Spout - Jumper Valve
VP370X	School Pattern Dual Mixer with No Spout - Jumper Valve



Products are to be installed in accordance with the Plumbing Code of Australia and AS/NZS3500. Reference should also be made to the Australasian Health Facility Guidelines (AHFG), ABCB and Local Government regulations when considering the choice of, and the installation of these products.

This product is compliant with the Lead Free requirements of NCC Volume Three.

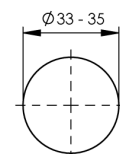
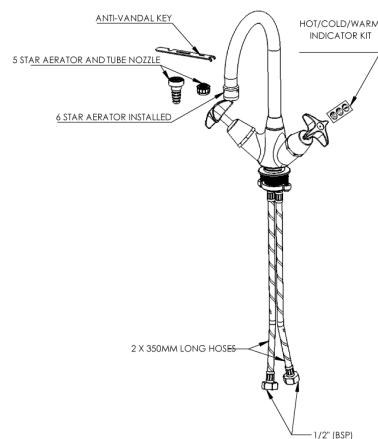
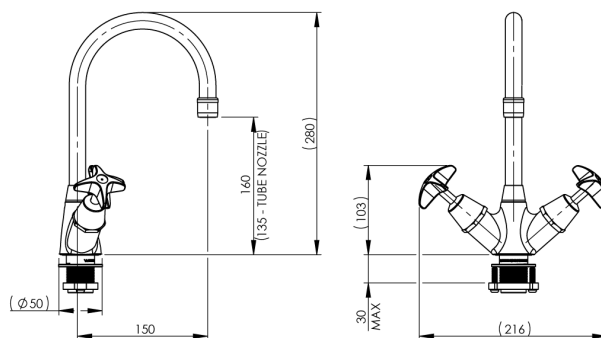
Due to ongoing Research and Development, specifications may change without notice. Component specifications may change on some export models.

Refer to warranty statement for warranty details - www.enware.com.au/warranty.

School Pattern Dual Mixer with SP020 Curved Swivel Spout - Jumper Valve

TECHNICAL DATA

Inlet Connection	1/2" BSP (15mm)
Recommended Pressure	50kPa – 500kPa
Maximum Static Pressure	1200kPa
Maximum Recommended Temperature	70°C
Maximum Jumper Valve Working Temperature	95°C
Flow Rate	3.8L/min 3.8 lpm aerator supplied installed. Tube nozzle and 6 lpm aerator supplied loose in carton.
Finish	Chrome
Valve Type	Jumper Valve



INSTALLATION DETAIL
(BENCH TOP CUTOUT)

SPARE PARTS

VP380	School Pattern - Bib/Pillar Stuffing Box Assembly - Jumper Valve
VP378	School Pattern - Handle
FS184	Curved Outlet Aerated - 150mm - 95mm Height
MIS590	Vandal Proof Key Only
SP301	Aerator - M22x1 F/Male - No.1 - Standard
ATMS611	Aquablend - SQX M10 x 1/2" BSP Hose 350mm - 2 Hoses - 1x Hot 1x Cold
MIS595RYB	Spare Parts: Indicator Button Kit - Hot / Cold / Warm - Stick On