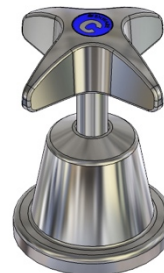


Spare Parts: School Pattern - Basin/Sink Top Assembly - Jumper Valve

School Pattern Basin/Sink Top Assembly - Jumper Valve



PRODUCT CODE

VP391

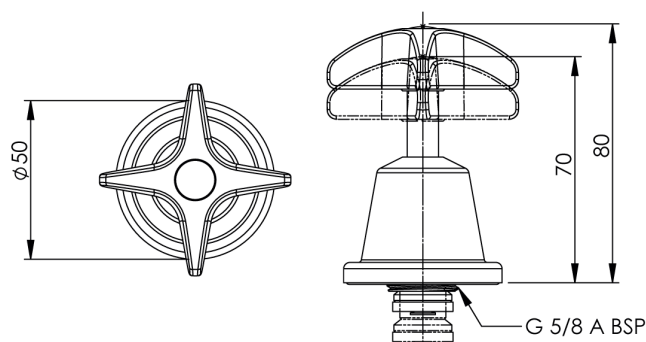
VP BASIN/SINK TOP ASSY



Due to ongoing Research and Development, specifications may change without notice.
Component specifications may change on some export models.
Refer to warranty statement for warranty details - www.enware.com.au/warranty.

TECHNICAL DATA

Finish	Chrome
Valve Type	Jumper Valve
Maximum Ceramic Disk Operating Temperature	85°C
Maximum Jumper Valve Working Temperature	95°C
Maximum Working Pressure	500kPa



Spare Parts: School Pattern - Basin/Sink Top Assembly - Jumper Valve

SPARE PARTS

ATMS602	Spare Parts: Oring Kit Sqx Swivel Spout
IN381	Spare Parts: Traditional Basin/Sink SBA
MIS590	Vandal Proof Key Only
MIS595	Spare Parts: Button Only (Cs Lab Etc)
VP381	Spare Parts: School Pattern - Basin/Sink Stuffing Box Assembly - Jumper Valve
VP391	Spare Parts: School Pattern - Basin/Sink Top Assembly - Jumper Valve